

Fremont County, Iowa
Horizontal Datum: **NAD 83(2011)** - Vertical Datum: **NAVD 1988**
Iowa State Plane South Zone (1402)
Iowa Regional Coordinate System Zone 6 Council Bluffs
US Survey Feet
2015

Point Name: **47**

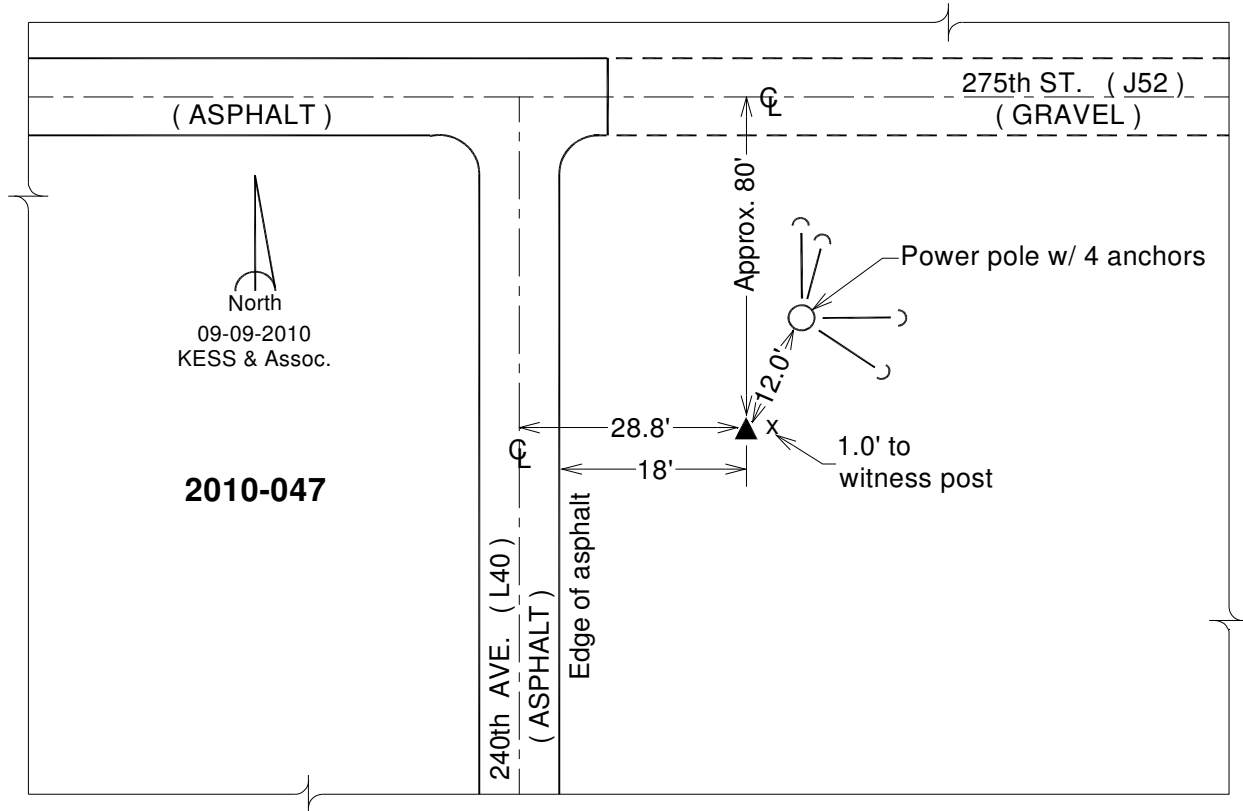
Designation: 2010-047 Fremont Co GPS Control Pt (Set by DCI in 2010)

NAD 83(NA2011) Latitude: **N40°39'07.19385"** Longitude: **W95°44'08.31386"**
NAVD 88 Ortho Height: **914.414sft** Ellip. Ht: **816.913sft** **Geoid12A**

Iowa South Zone (1402) Northing: **245515.420sft** Easting: **1020142.036sft**
Mapping Angle: **-1°28'21"** Combination Scale Factor: **0.999954970**

IaRCS Zone 6 Northing: **6746459.568sft** Easting: **16499359.161sft**
Mapping Angle: **-0°00'05"** Combination Scale Factor: **1.000000017**

Monument Type: Berntsen 3/4" Top Security Rod Monument with a 2-1/2" dia. domed survey cap and permanent magnet encased in a white PVC pipe with a NGS style alum. access cover.



This document was prepared by DCI on January 9, 2015 for use by Fremont County, Iowa