

**Fremont County, Iowa**  
Horizontal Datum: **NAD 83(2011)** - Vertical Datum: **NAVD 1988**  
Iowa State Plane South Zone (1402)  
Iowa Regional Coordinate System Zone 6 Council Bluffs  
US Survey Feet  
**2015**

Point Name: **49**

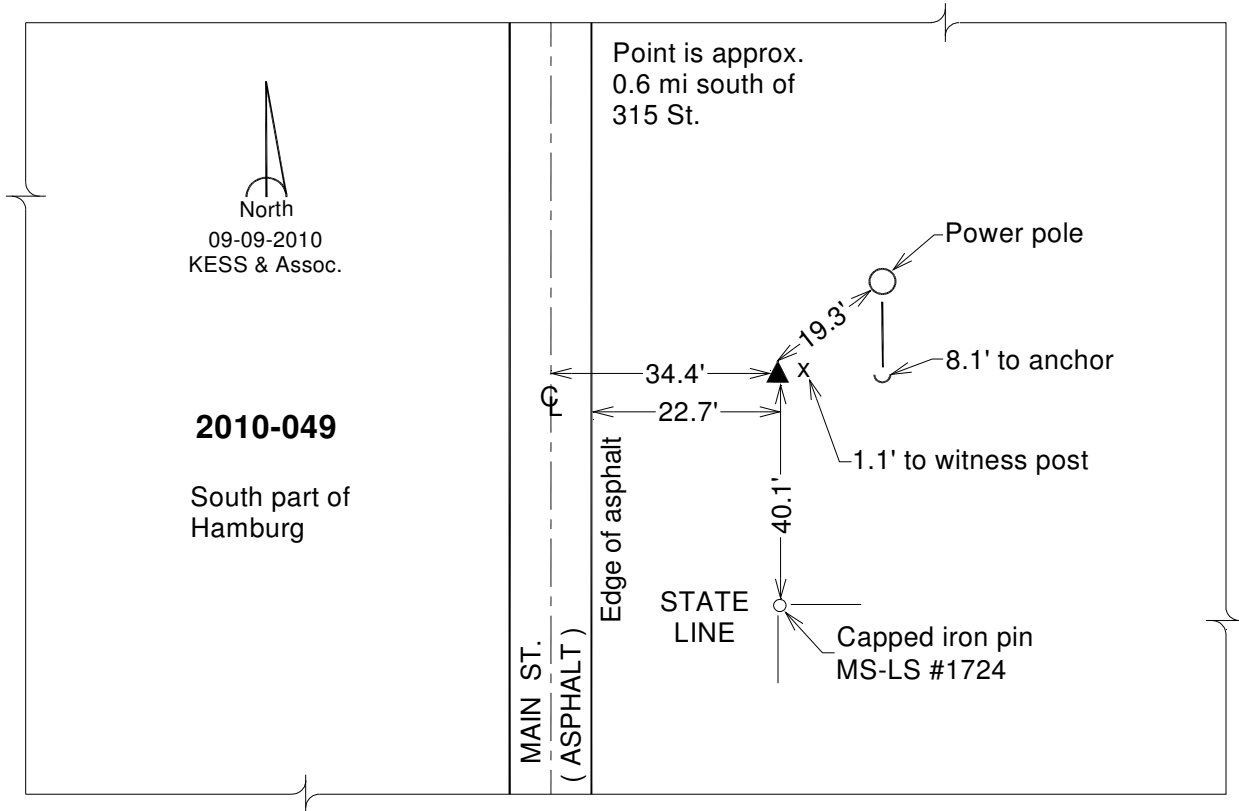
**Designation:** 2010-049 Fremont Co GPS Control Pt (Set by DCI in 2010)

NAD 83(NA2011) Latitude: **N40°35'02.99524"** Longitude: **W95°39'30.95312"**  
NAVD 88 Ortho Height: **907.266sft** Ellip. Ht: **808.720sft** **Geoid12A**

Iowa South Zone (1402) Northing: **220269.844sft** Easting: **1040900.225sft**  
Mapping Angle: **-1°25'19"** Combination Scale Factor: **0.999967304**

IaRCS Zone 6 Northing: **6721754.154sft** Easting: **16520759.349sft**  
Mapping Angle: **0°02'55"** Combination Scale Factor: **1.000000900**

**Monument Type:** Berntsen 3/4" Top Security Rod Monument with a 2-1/2" dia. domed survey cap and permanent magnet encased in a white PVC pipe with a NGS style alum. access cover.



*This document was prepared by DCI on January 9, 2015 for use by Fremont County, Iowa*