

Fremont County, Iowa
Horizontal Datum: **NAD 83(2011)** - Vertical Datum: **NAVD 1988**
Iowa State Plane South Zone (1402)
Iowa Regional Coordinate System Zone 6 Council Bluffs
US Survey Feet
2015

Point Name: **51**

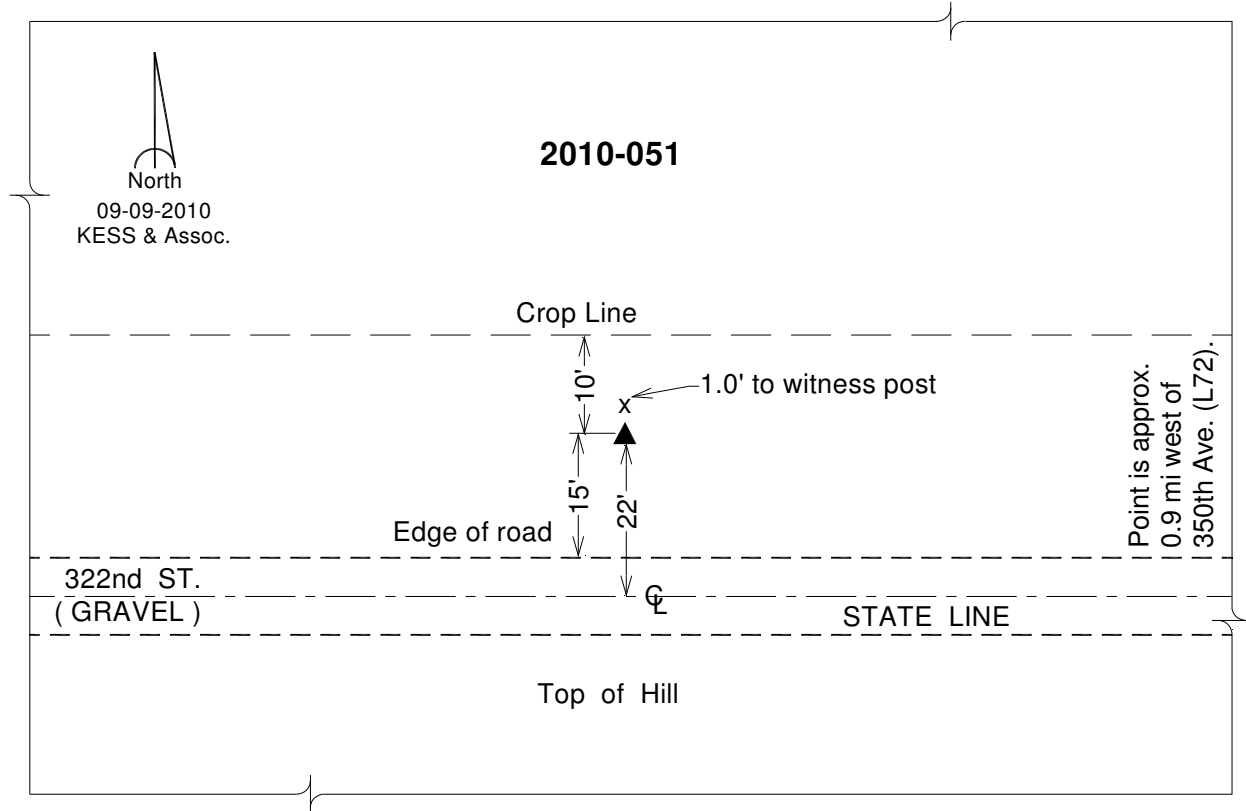
Designation: 2010-051 Fremont Co GPS Control Pt (Set by DCI in 2010)

NAD 83(NA2011) Latitude: **N40°34'57.21103"** Longitude: **W95°32'37.52120"**
NAVD 88 Ortho Height: **1106.472sft** Ellip. Ht: **1007.076sft** **Geoid12A**

Iowa South Zone (1402) Northing: **218914.155sft** Easting: **1072776.041sft**
Mapping Angle: **-1°20'46"** Combination Scale Factor: **0.999958139**

IaRCS Zone 6 Northing: **6721216.631sft** Easting: **16552660.557sft**
Mapping Angle: **0°07'24"** Combination Scale Factor: **0.999994112**

Monument Type: Berntsen 3/4" Top Security Rod Monument with a 2-1/2" dia. domed survey cap and permanent magnet encased in a white PVC pipe with a NGS style alum. access cover.



This document was prepared by DCI on January 9, 2015 for use by Fremont County, Iowa