

**Fremont County, Iowa**  
Horizontal Datum: **NAD 83(2011)** - Vertical Datum: **NAVD 1988**  
Iowa State Plane South Zone (1402)  
Iowa Regional Coordinate System Zone 6 Council Bluffs  
US Survey Feet  
**2015**

Point Name: **52**

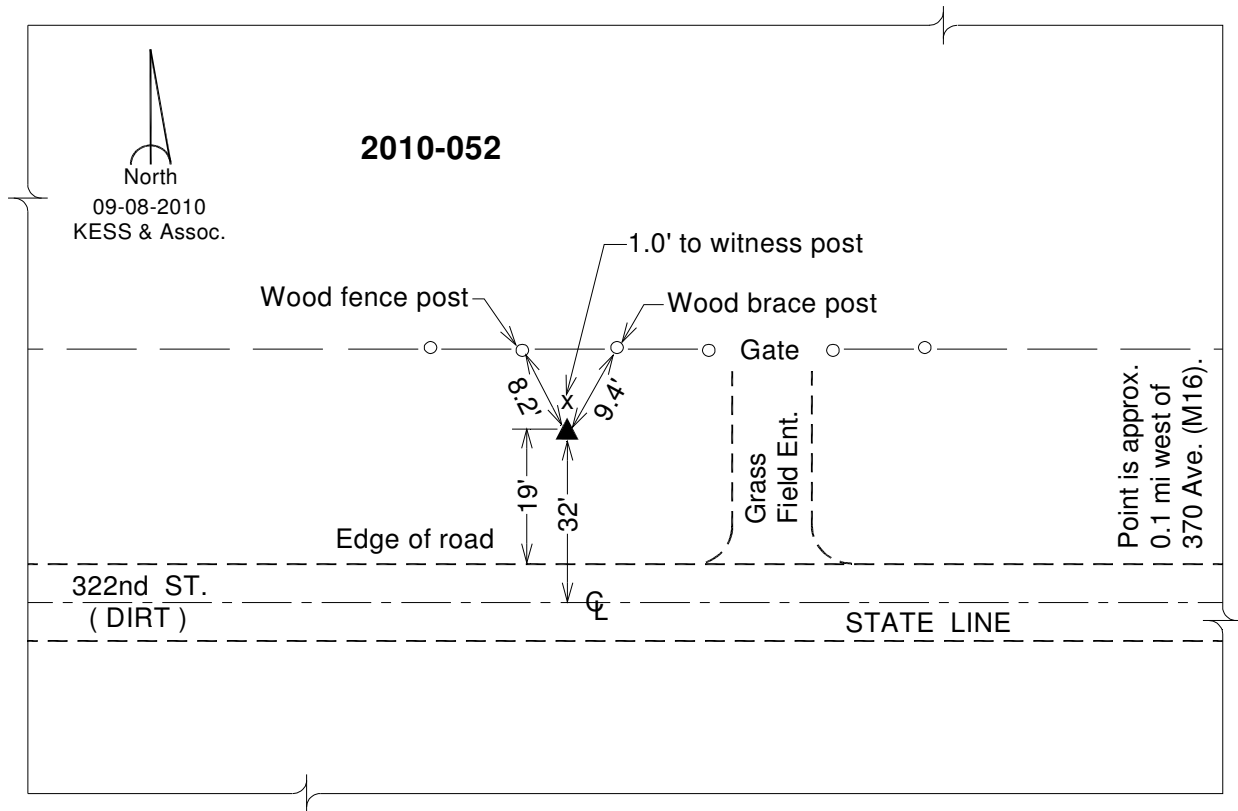
**Designation:** 2010-052 Fremont Co GPS Control Pt (Set by DCI in 2010)

NAD 83(NA2011) Latitude: **N40°34'54.70454"** Longitude: **W95°29'29.65618"**  
NAVD 88 Ortho Height: **1094.875sft** Ellip. Ht: **995.135sft** **Geoid12A**

Iowa South Zone (1402) Northing: **218324.356sft** Easting: **1087261.655sft**  
Mapping Angle: **-1°18'43"** Combination Scale Factor: **0.999958839**

IaRCS Zone 6 Northing: **6720998.459sft** Easting: **16567157.065sft**  
Mapping Angle: **0°09'26"** Combination Scale Factor: **0.999996667**

**Monument Type:** Berntsen 3/4" Top Security Rod Monument with a 2-1/2" dia. domed survey cap and permanent magnet encased in a white PVC pipe with a NGS style alum. access cover.



*This document was prepared by DCI on January 9, 2015 for use by Fremont County, Iowa*