

Fremont County, Iowa

Horizontal Datum: **NAD 83(2011)** - Vertical Datum: **NAVD 1988**

Iowa State Plane South Zone (1402)

Iowa Regional Coordinate System Zone 6 Council Bluffs

US Survey Feet

2015

Point Name: **1017**

Designation: NGS vert. "Y 182" PID:LF1440 (2010 Fremont Co. GPS observations)

NAD 83(NA2011) Latitude: **N40°53'06.47649"** Longitude: **W95°47'43.41196"**

NAVD 88 Ortho Height: **945.290sft** Ellip. Ht: **852.475sft** **Geoid12A**

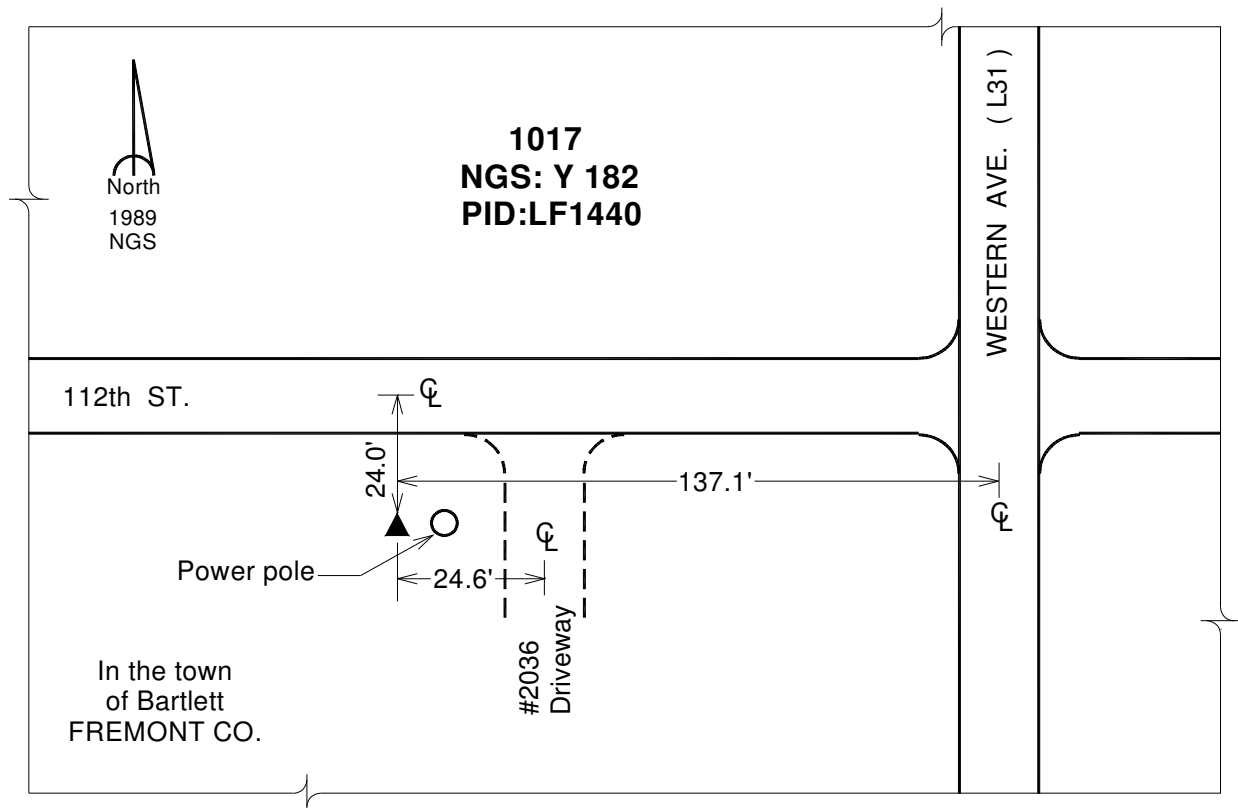
Iowa South Zone (1402) Northing: **330854.517sft** Easting: **1005809.600sft**

Mapping Angle: **-1°30'43"** Combination Scale Factor: **0.999922795**

IaRCS Zone 6 Northing: **6831407.784sft** Easting: **16482839.294sft**

Mapping Angle: **-0°02'26"** Combination Scale Factor: **0.999998657**

Monument Type: The station is a stainless steel rod set flush, with access to the datum point through a 5-inch NGS logo cap stamped "Y 182 1989"



This document was prepared by DCI on January 9, 2015 for use by Fremont County, Iowa