

Fremont County, Iowa
Horizontal Datum: **NAD 83(2011)** - Vertical Datum: **NAVD 1988**
Iowa State Plane South Zone (1402)
Iowa Regional Coordinate System Zone 6 Council Bluffs
US Survey Feet
2015

Point Name: **1022**

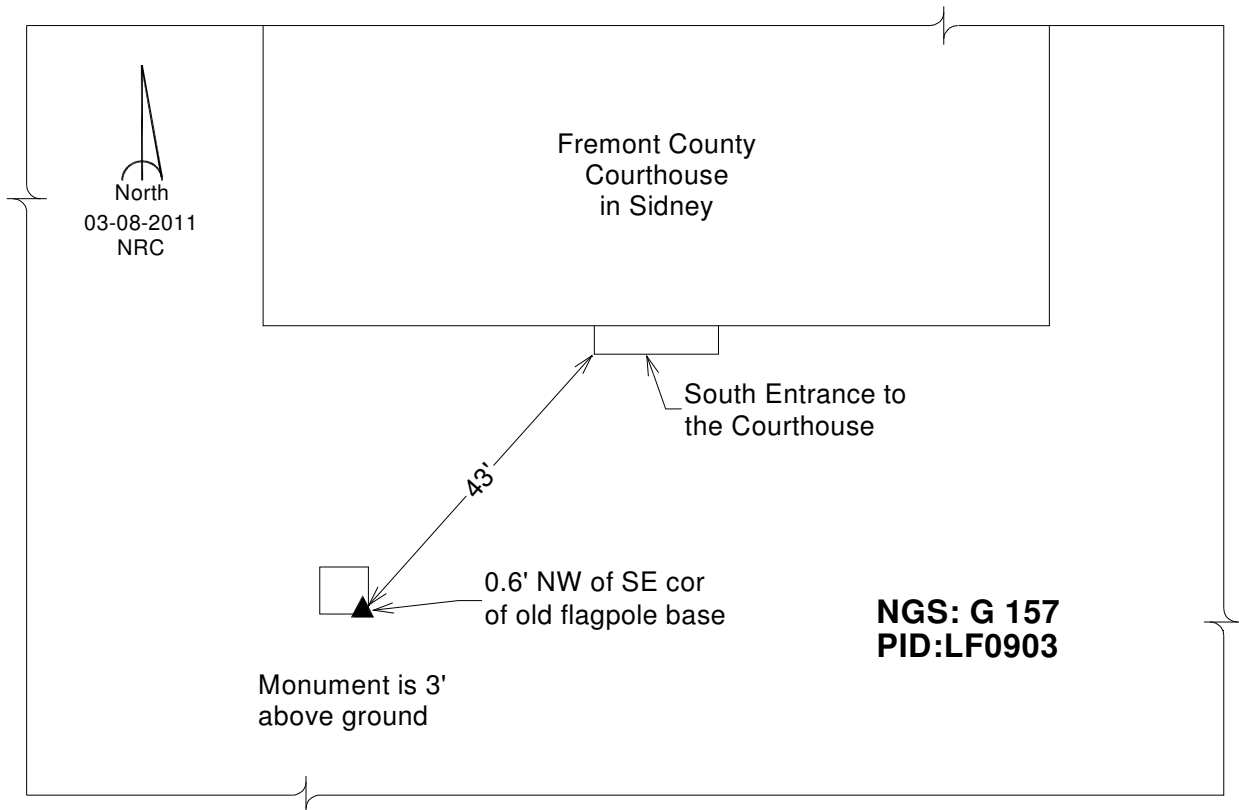
Designation: NGS 2nd order vertical "G 157" PID:LF0903

NAD 83(NA2011) Latitude: **N40°44'50.72643"** Longitude: **W95°38'49.30909"**
NAVD 88 Ortho Height: **1176.580sft** Ellip. Ht: **1078.955sft** **Geoid12A**

Iowa South Zone (1402) Northing: **279651.469sft** Easting: **1045580.338sft**
Mapping Angle: **-1°24'51"** Combination Scale Factor: **0.999928011**

IaRCS Zone 6 Northing: **6781239.155sft** Easting: **16523914.171sft**
Mapping Angle: **0°03'23"** Combination Scale Factor: **0.999988166**

Monument Type: The station is a bench mark disk stamped "G 157 1949" and set in the top of southeast corner of concrete flagpole base.



This document was prepared by DCI on January 9, 2015 for use by Fremont County, Iowa