

Fremont County, Iowa

Horizontal Datum: **NAD 83(2011)** - Vertical Datum: **NAVD 1988**
Iowa State Plane South Zone (1402)
Iowa Regional Coordinate System Zone 6 Council Bluffs
US Survey Feet
2015

Point Name: **1027**

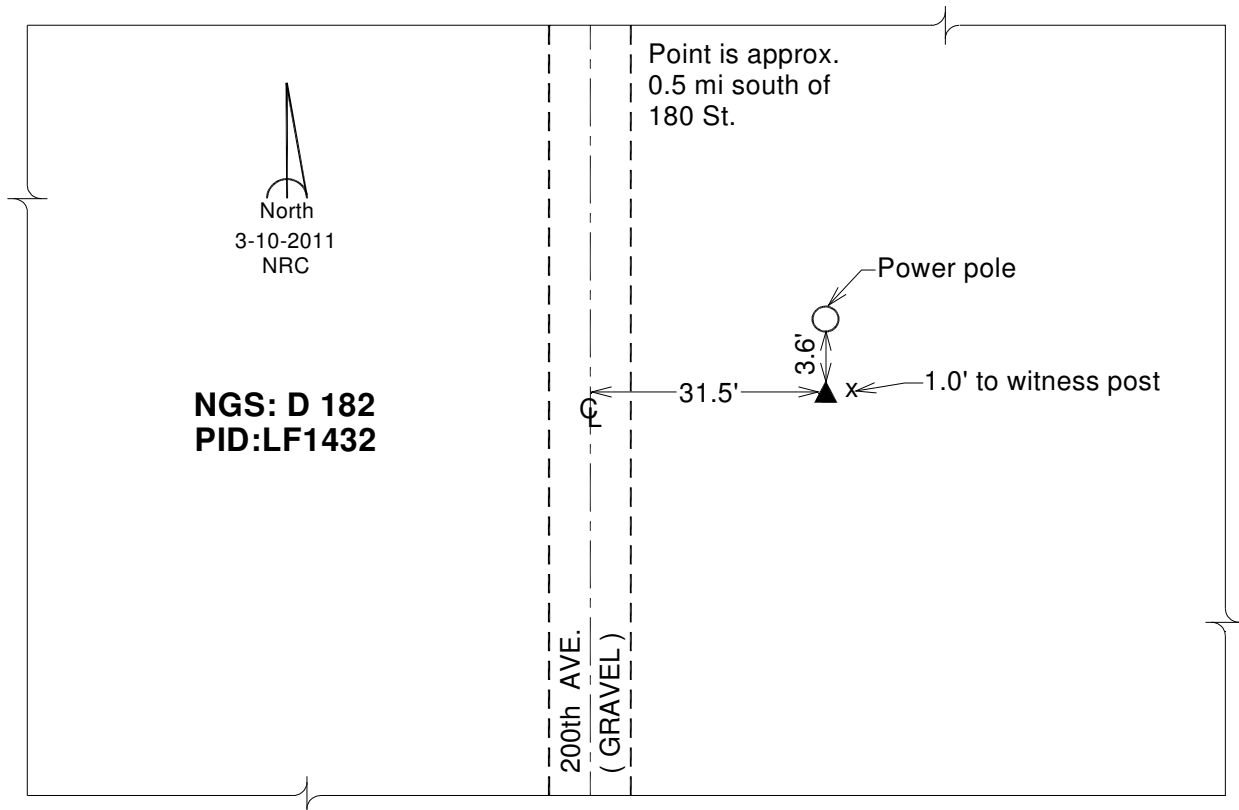
Designation: NGS 1st order vertical "D 182" PID:LF1432

NAD 83(NA2011) Latitude: **N40°46'48.14688"** Longitude: **W95°48'11.91181"**
NAVD 88 Ortho Height: **930.920sft** Ellip. Ht: **835.745sft** **Geoid12A**

Iowa South Zone (1402) Northing: **292638.055sft** Easting: **1002607.661sft**
Mapping Angle: **-1°31'02"** Combination Scale Factor: **0.999935304**

IaRCS Zone 6 Northing: **6793119.011sft** Easting: **16480619.589sft**
Mapping Angle: **-0°02'45"** Combination Scale Factor: **0.999999548**

Monument Type: The station is a stainless steel rod in a sleeve with a NGS style alum. access cover.



This document was prepared by DCI on January 9, 2015 for use by Fremont County, Iowa