

**Fremont County, Iowa**  
Horizontal Datum: **NAD 83(2011)** - Vertical Datum: **NAVD 1988**  
Iowa State Plane South Zone (1402)  
Iowa Regional Coordinate System Zone 6 Council Bluffs  
US Survey Feet  
**2015**

Point Name: **2017**

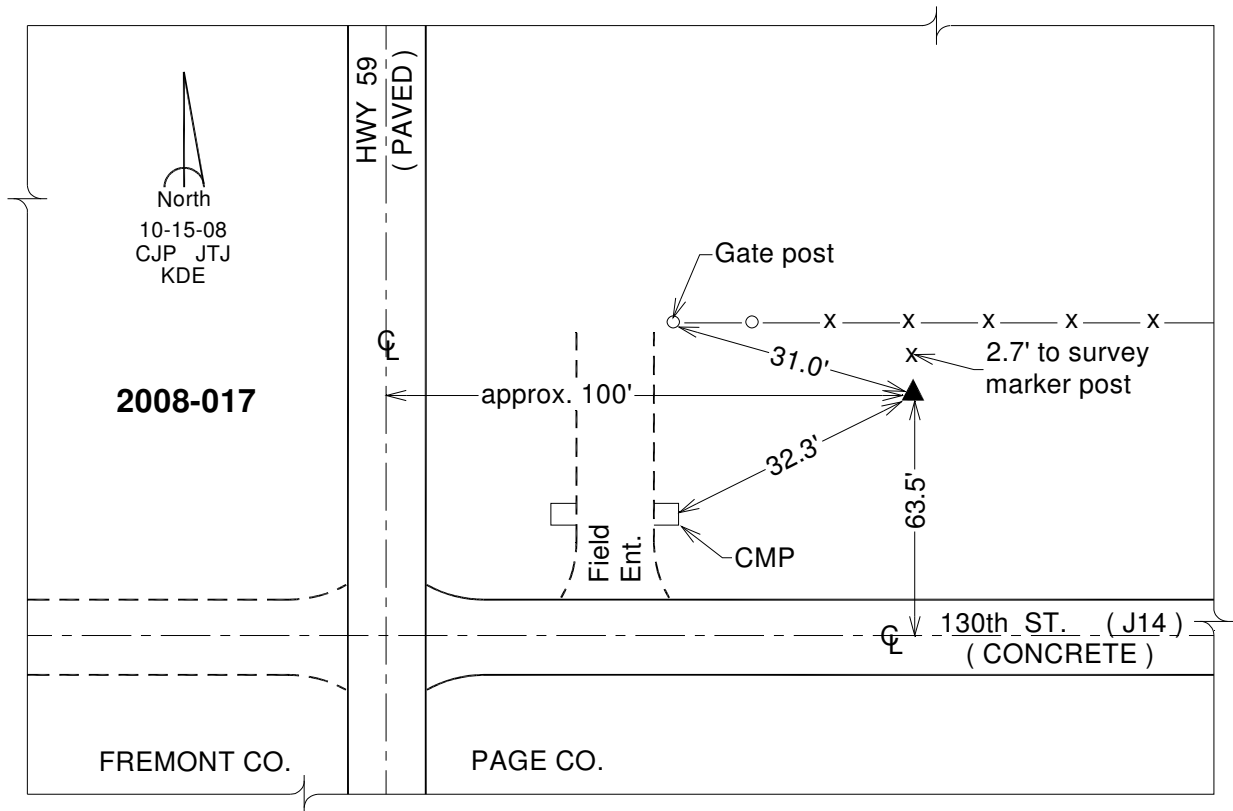
**Designation:** 2008-017 Page Co GPS Control Pt (Set by DCI in 2008)

NAD 83(NA2011) Latitude: **N40°51'29.78767"** Longitude: **W95°23'02.91600"**  
NAVD 88 Ortho Height: **1116.570sft** Ellip. Ht: **1017.723sft** **Geoid12A**

Iowa South Zone (1402) Northing: **318340.031sft** Easting: **1119275.910sft**  
Mapping Angle: **-1°14'28"** Combination Scale Factor: **0.999917586**

IaRCS Zone 6 Northing: **6821808.409sft** Easting: **16596598.169sft**  
Mapping Angle: **0°13'42"** Combination Scale Factor: **1.000001099**

**Monument Type:** Berntsen 3/4" Top Security Rod Monument with a 2-1/2" dia. domed survey cap and permanent magnet encased in a white PVC pipe with a NGS style alum. access cover.



*This document was prepared by DCI on January 9, 2015 for use by Fremont County, Iowa*