

Fremont County, Iowa

Horizontal Datum: **NAD 83(2011)** - Vertical Datum: **NAVD 1988**
Iowa State Plane South Zone (1402)
Iowa Regional Coordinate System Zone 6 Council Bluffs
US Survey Feet
2015

Point Name: **2035**

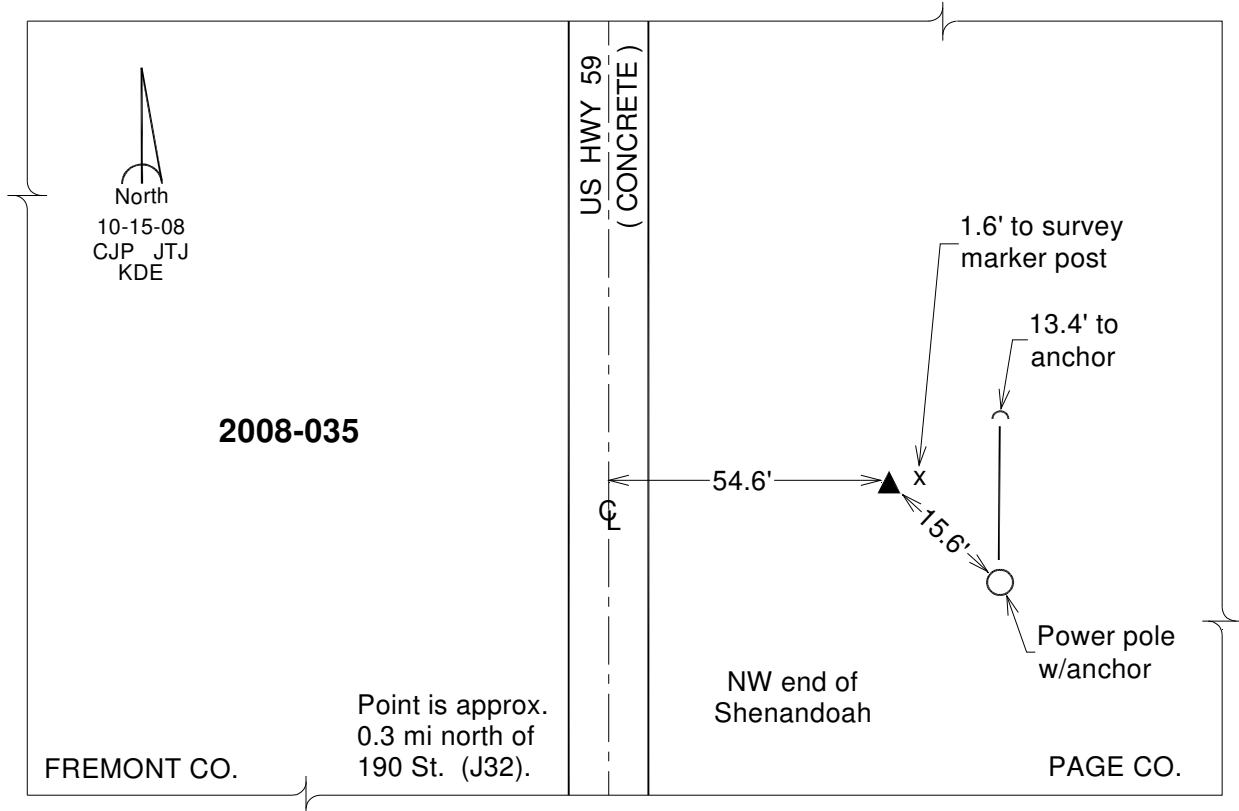
Designation: 2008-035 Page Co GPS Control Pt (Set by DCI in 2008)

NAD 83(NA2011) Latitude: **N40°46'32.76627"** Longitude: **W95°23'04.81394"**
NAVD 88 Ortho Height: **960.410sft** Ellip. Ht: **860.558sft** **Geoid12A**

Iowa South Zone (1402) Northing: **288291.093sft** Easting: **1118478.867sft**
Mapping Angle: **-1°14'29"** Combination Scale Factor: **0.999934666**

IaRCS Zone 6 Northing: **6791746.542sft** Easting: **16596571.899sft**
Mapping Angle: **0°13'40"** Combination Scale Factor: **1.000008593**

Monument Type: Berntsen 3/4" Top Security Rod Monument with a 2-1/2" dia. domed survey cap and permanent magnet encased in a white PVC pipe with a NGS style alum. access cover.



This document was prepared by DCI on January 9, 2015 for use by Fremont County, Iowa