

**Fremont County, Iowa**  
Horizontal Datum: **NAD 83(2011)** - Vertical Datum: **NAVD 1988**  
Iowa State Plane South Zone (1402)  
Iowa Regional Coordinate System Zone 6 Council Bluffs  
US Survey Feet  
**2015**

Point Name: **2036**

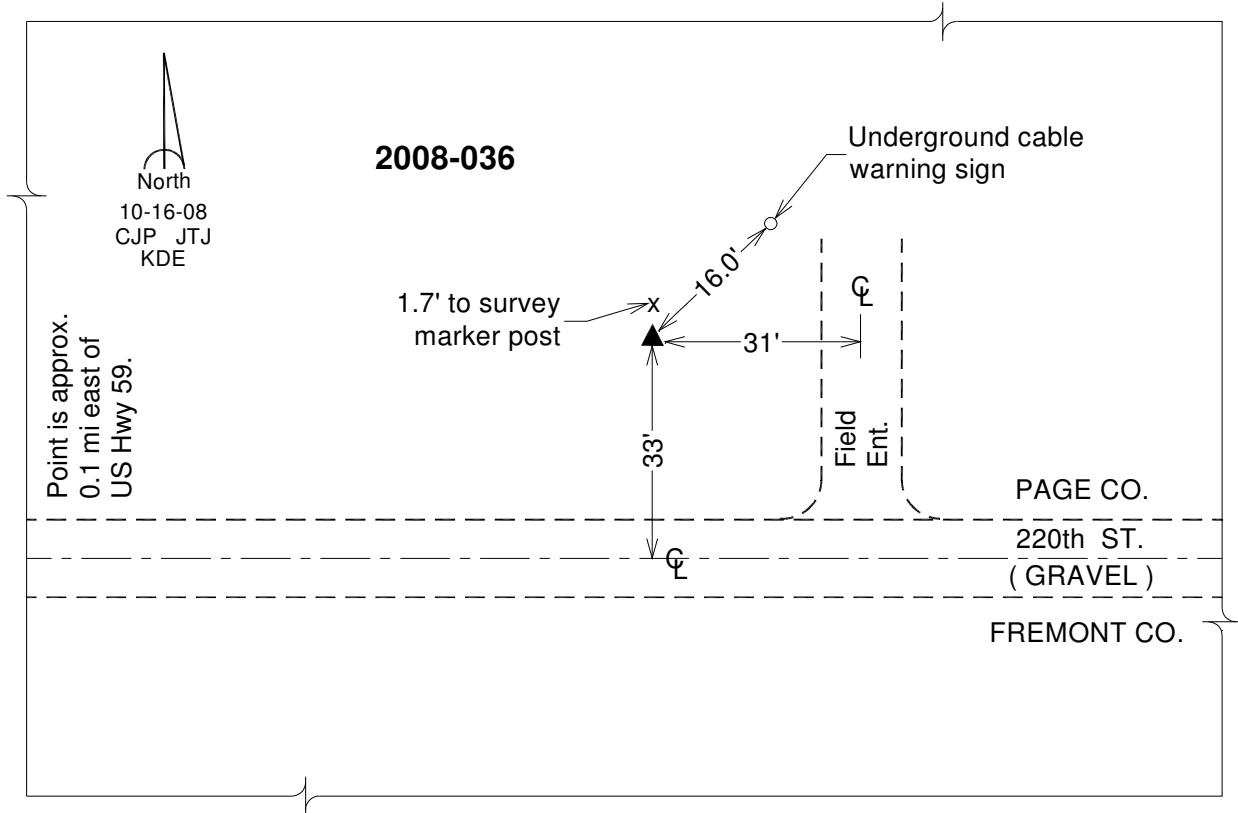
**Designation:** 2008-036 Page Co GPS Control Pt (Set by DCI in 2008)

NAD 83(NA2011) Latitude: **N40°43'42.01389"** Longitude: **W95°23'02.86650"**  
NAVD 88 Ortho Height: **1068.940sft** Ellip. Ht: **968.771sft** **Geoid12A**

Iowa South Zone (1402) Northing: **271011.478sft** Easting: **1118254.375sft**  
Mapping Angle: **-1°14'28"** Combination Scale Factor: **0.999935940**

IaRCS Zone 6 Northing: **6774465.628sft** Easting: **16596790.489sft**  
Mapping Angle: **0°13'40"** Combination Scale Factor: **1.000003478**

**Monument Type:** Berntsen 3/4" Top Security Rod Monument with a 2-1/2" dia. domed survey cap and permanent magnet encased in a white PVC pipe with a NGS style alum. access cover.



*This document was prepared by DCI on January 9, 2015 for use by Fremont County, Iowa*