

Fremont County, Iowa
Horizontal Datum: **NAD 83(2011)** - Vertical Datum: **NAVD 1988**
Iowa State Plane South Zone (1402)
Iowa Regional Coordinate System Zone 6 Council Bluffs
US Survey Feet
2015

Point Name: **2053**

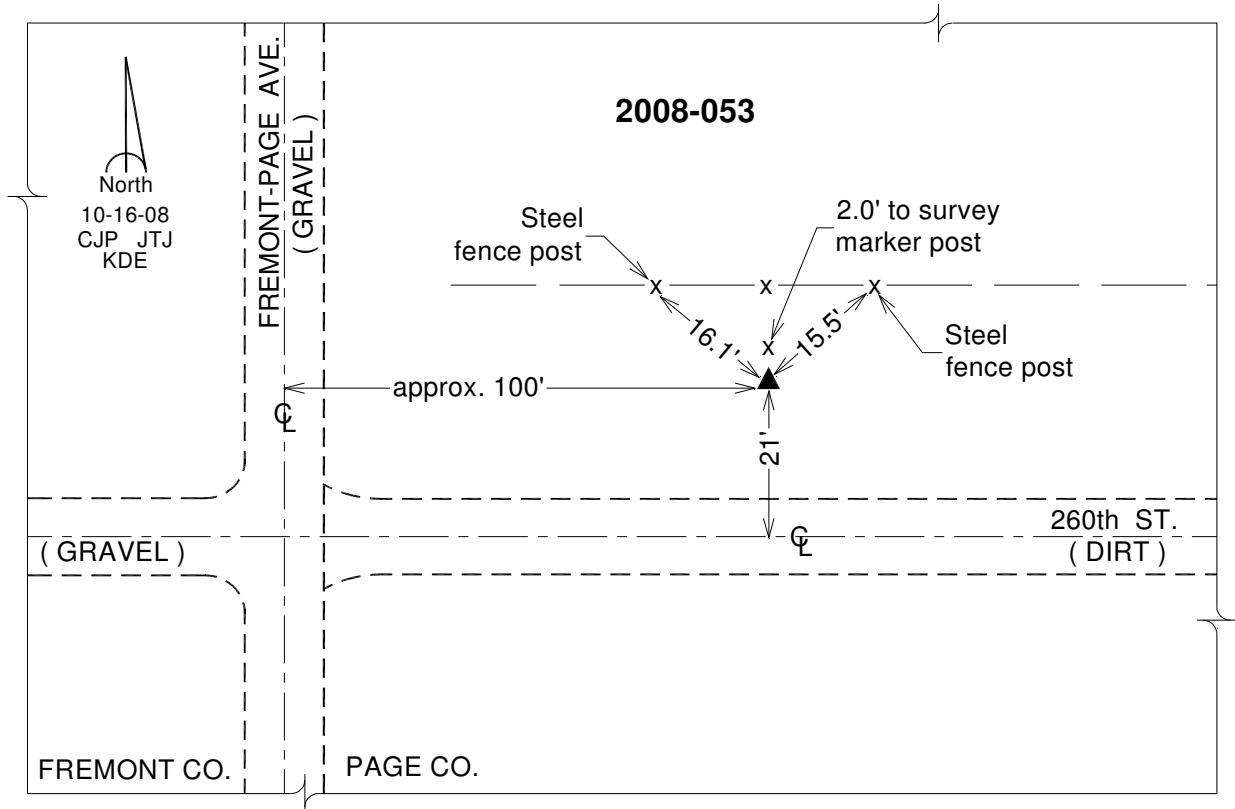
Designation: 2008-053 Page Co GPS Control Pt (Set by DCI in 2008)

NAD 83(NA2011) Latitude: **N40°40'11.80446"** Longitude: **W95°22'22.41249"**
NAVD 88 Ortho Height: **1179.250sft** Ellip. Ht: **1078.824sft** **Geoid12A**

Iowa South Zone (1402) Northing: **249675.644sft** Easting: **1120910.125sft**
Mapping Angle: **-1°14'01"** Combination Scale Factor: **0.999939545**

IaRCS Zone 6 Northing: **6753203.524sft** Easting: **16599992.445sft**
Mapping Angle: **0°14'06"** Combination Scale Factor: **0.999998946**

Monument Type: Berntsen 3/4" Top Security Rod Monument with a 2-1/2" dia. domed survey cap and permanent magnet encased in a white PVC pipe with a NGS style alum. access cover.



This document was prepared by DCI on January 9, 2015 for use by Fremont County, Iowa