

Fremont County, Iowa
Horizontal Datum: **NAD 83(2011)** - Vertical Datum: **NAVD 1988**
Iowa State Plane South Zone (1402)
Iowa Regional Coordinate System Zone 6 Council Bluffs
US Survey Feet
2015

Point Name: **2054**

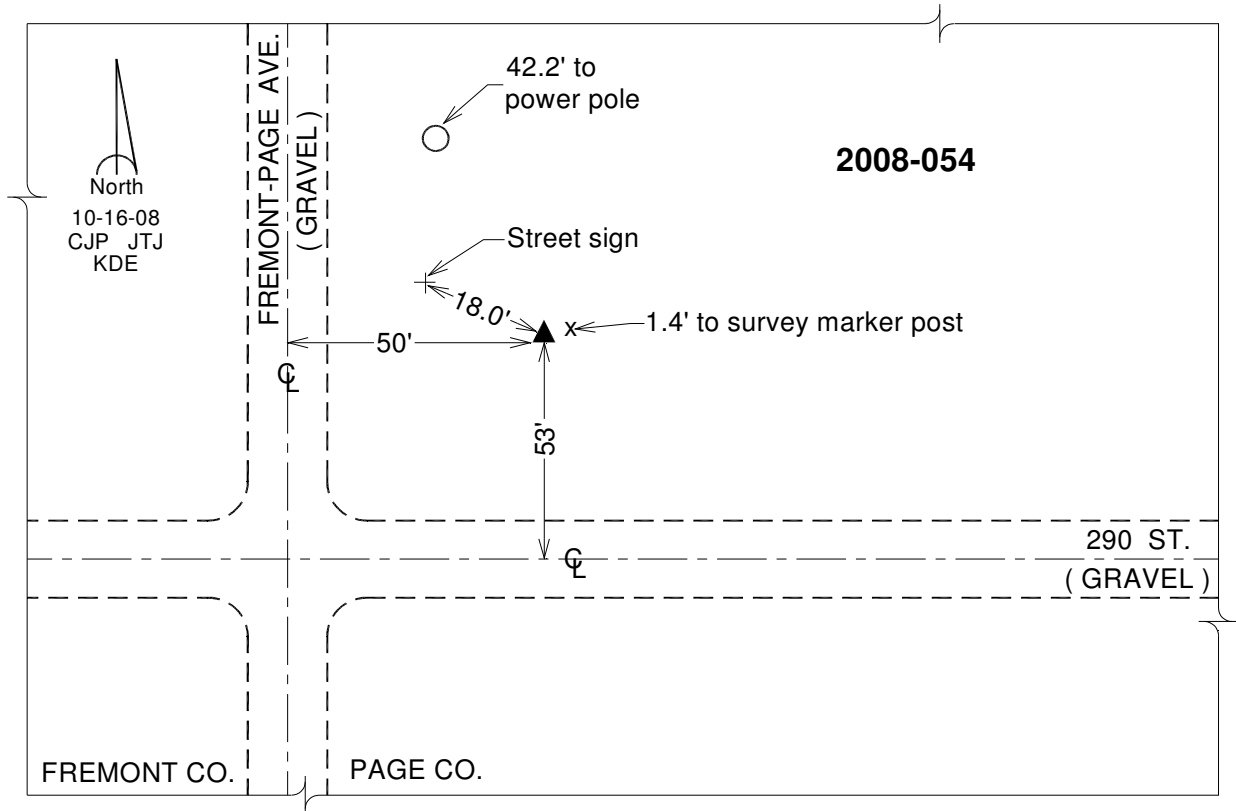
Designation: 2008-054 Page Co GPS Control Pt (Set by DCI in 2008)

NAD 83(NA2011) Latitude: **N40°37'34.47346"** Longitude: **W95°22'25.42888"**
NAVD 88 Ortho Height: **1137.980sft** Ellip. Ht: **1037.513sft** **Geoid12A**

Iowa South Zone (1402) Northing: **233762.223sft** Easting: **1120334.789sft**
Mapping Angle: **-1°14'03"** Combination Scale Factor: **0.999948816**

IaRCS Zone 6 Northing: **6737279.697sft** Easting: **16599825.101sft**
Mapping Angle: **0°14'03"** Combination Scale Factor: **1.000000880**

Monument Type: Berntsen 3/4" Top Security Rod Monument with a 2-1/2" dia. domed survey cap and permanent magnet encased in a white PVC pipe with a NGS style alum. access cover.



This document was prepared by DCI on January 9, 2015 for use by Fremont County, Iowa