

**Fremont County, Iowa**

Horizontal Datum: **NAD 83(2011)** - Vertical Datum: **NAVD 1988**  
Iowa State Plane South Zone (1402)  
Iowa Regional Coordinate System Zone 6 Council Bluffs  
US Survey Feet  
**2015**

Point Name: **2071**

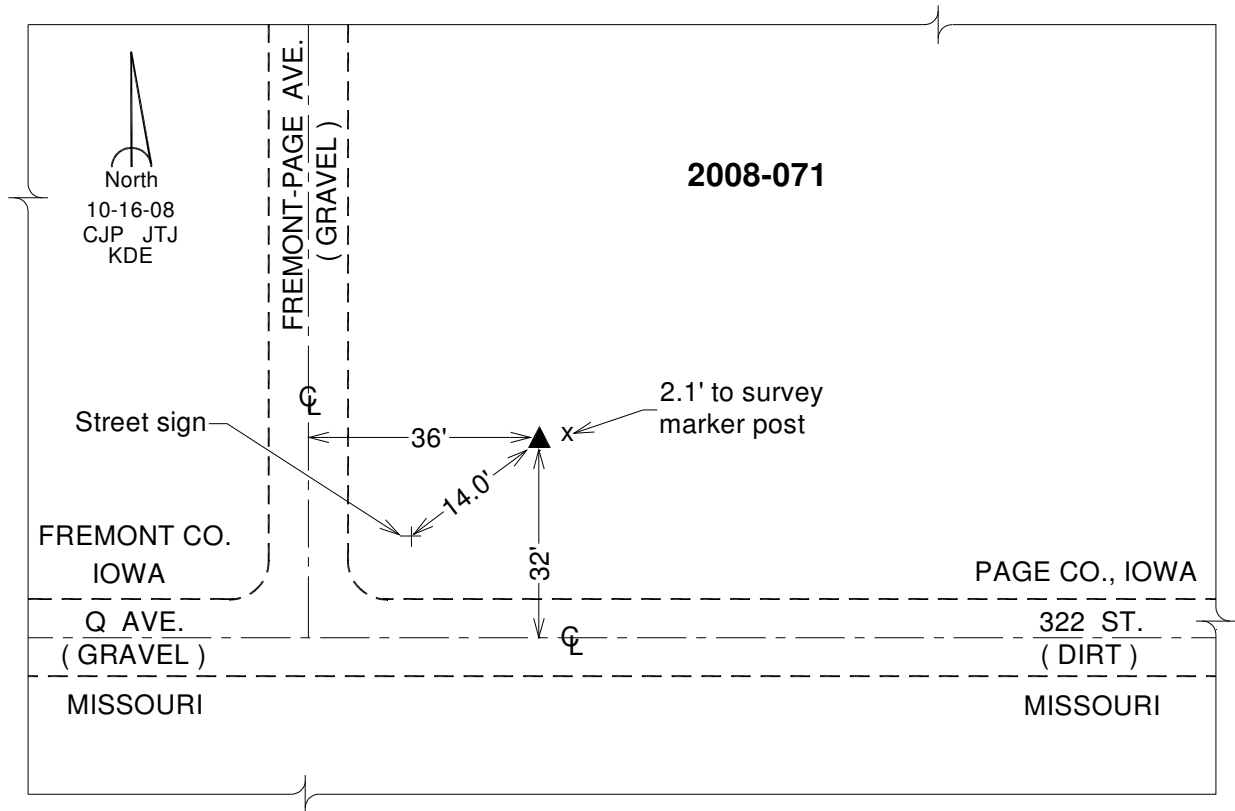
**Designation:** 2008-071 Page Co GPS Control Pt (Set by DCI in 2008)

NAD 83(NA2011) Latitude: **N40°34'49.92384"** Longitude: **W95°22'25.74428"**  
NAVD 88 Ortho Height: **1015.890sft** Ellip. Ht: **915.403sft** **Geoid12A**

Iowa South Zone (1402) Northing: **217113.955sft** Easting: **1119951.766sft**  
Mapping Angle: **-1°14'03"** Combination Scale Factor: **0.999962892**

IaRCS Zone 6 Northing: **6720626.282sft** Easting: **16599868.789sft**  
Mapping Angle: **0°14'02"** Combination Scale Factor: **1.000006716**

**Monument Type:** Berntsen 3/4" Top Security Rod Monument with a 2-1/2" dia. domed survey cap and permanent magnet encased in a white PVC pipe with a NGS style alum. access cover.



*This document was prepared by DCI on January 9, 2015 for use by Fremont County, Iowa*