

Fremont County, Iowa

Horizontal Datum: **NAD 83(2011)** - Vertical Datum: **NAVD 1988**
Iowa State Plane South Zone (1402)
Iowa Regional Coordinate System Zone 6 Council Bluffs
US Survey Feet
2015

Point Name: **3052**

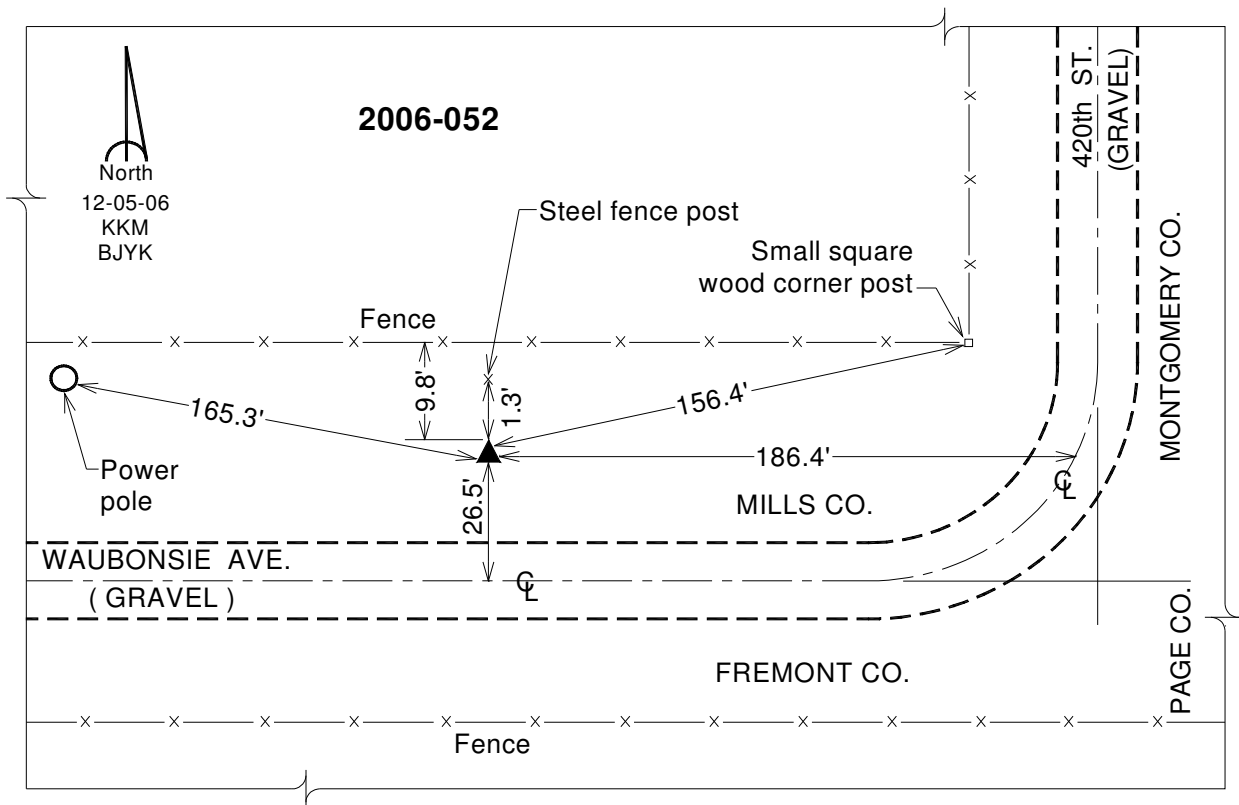
Designation: 2006-052 Mills Co (2010 Fremont Co. GPS observations)

NAD 83(NA2011) Latitude: **N40°54'05.59472"** Longitude: **W95°23'07.38980"**
NAVD 88 Ortho Height: **1021.750sft** Ellip. Ht: **923.723sft** **Geoid12A**

Iowa South Zone (1402) Northing: **334111.822sft** Easting: **1119273.987sft**
Mapping Angle: **-1°14'31"** Combination Scale Factor: **0.999917866**

IaRCS Zone 6 Northing: **6837576.313sft** Easting: **16596191.712sft**
Mapping Angle: **0°13'40"** Combination Scale Factor: **1.000005495**

Monument Type: Berntsen 3/4" Top Security Rod Monument with a 2-1/2" dia. domed survey cap and permanent magnet encased in a white PVC pipe with a NGS style alum. access cover.



This document was prepared by DCI on January 9, 2015 for use by Fremont County, Iowa