

**Fremont County, Iowa**  
Horizontal Datum: **NAD 83(2011)** - Vertical Datum: **NAVD 1988**  
Iowa State Plane South Zone (1402)  
Iowa Regional Coordinate System Zone 6 Council Bluffs  
US Survey Feet  
**2015**

Point Name: **3053**

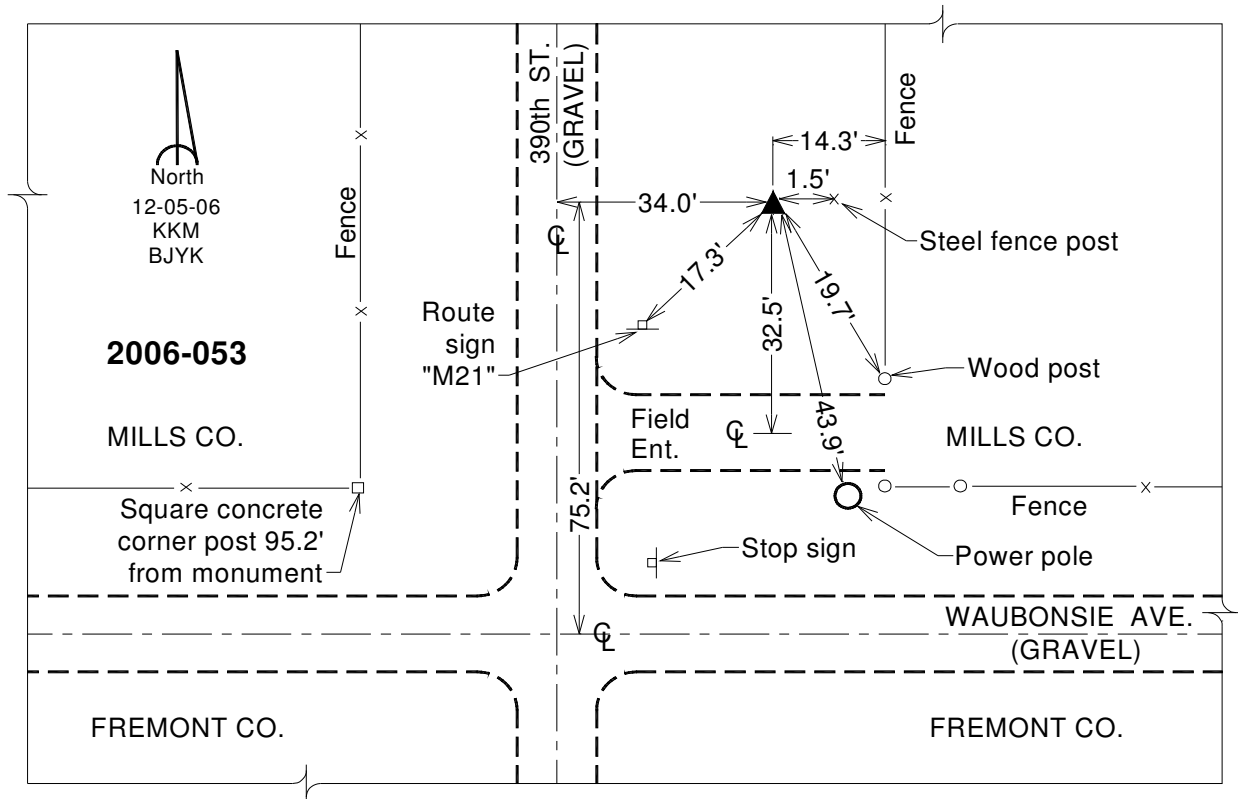
**Designation:** 2006-053 Mills Co (2010 Fremont Co. GPS observations)

NAD 83(NA2011) Latitude: **N40°54'06.29393"** Longitude: **W95°26'30.04519"**  
NAVD 88 Ortho Height: **1130.900sft** Ellip. Ht: **1033.521sft** **Geoid12A**

Iowa South Zone (1402) Northing: **334524.871sft** Easting: **1103718.027sft**  
Mapping Angle: **-1°16'44"** Combination Scale Factor: **0.999912610**

IaRCS Zone 6 Northing: **6837590.205sft** Easting: **16580628.937sft**  
Mapping Angle: **0°11'27"** Combination Scale Factor: **0.999997111**

**Monument Type:** Berntsen 3/4" Top Security Rod Monument with a 2-1/2" dia. domed survey cap and permanent magnet encased in a white PVC pipe with a NGS style alum. access cover.



*This document was prepared by DCI on January 9, 2015 for use by Fremont County, Iowa*