

Fremont County, Iowa
 Horizontal Datum: **NAD 83(2011)** - Vertical Datum: **NAVD 1988**
 Iowa State Plane South Zone (1402)
 Iowa Regional Coordinate System Zone 6 Council Bluffs
 US Survey Feet
2015

Point Name: **3054**

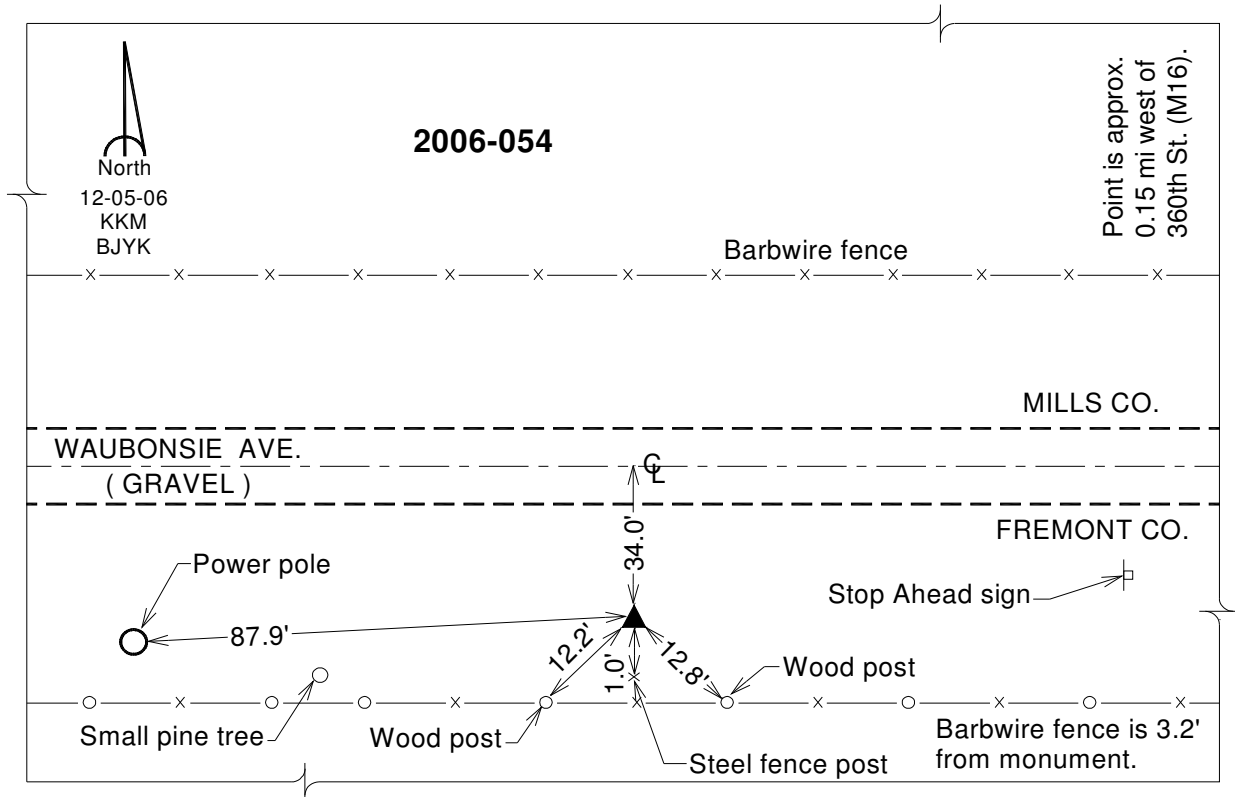
Designation: 2006-054 Mills Co (2010 Fremont Co. GPS observations)

NAD 83(NA2011) Latitude: **N40°54'05.47296"** Longitude: **W95°30'09.47605"**
 NAVD 88 Ortho Height: **1077.710sft** Ellip. Ht: **981.031sft** **Geoid12A**

Iowa South Zone (1402) Northing: **334823.800sft** Easting: **1086871.051sft**
 Mapping Angle: **-1°19'09"** Combination Scale Factor: **0.999915135**

IaRCS Zone 6 Northing: **6837456.820sft** Easting: **16563778.437sft**
 Mapping Angle: **0°09'04"** Combination Scale Factor: **0.999996835**

Monument Type: Berntsen 3/4" Top Security Rod Monument with a 2-1/2" dia. domed survey cap and permanent magnet encased in a white PVC pipe with a NGS style alum. access cover.



This document was prepared by DCI on January 9, 2015 for use by Fremont County, Iowa