

Fremont County, Iowa
 Horizontal Datum: **NAD 83(2011)** - Vertical Datum: **NAVD 1988**
 Iowa State Plane South Zone (1402)
 Iowa Regional Coordinate System Zone 6 Council Bluffs
 US Survey Feet
2015

Point Name: **3055 (RESET by Mills Co. in 2013)**

Designation: 2006-055 Mills Co (2010 Fremont Co. GPS observations)

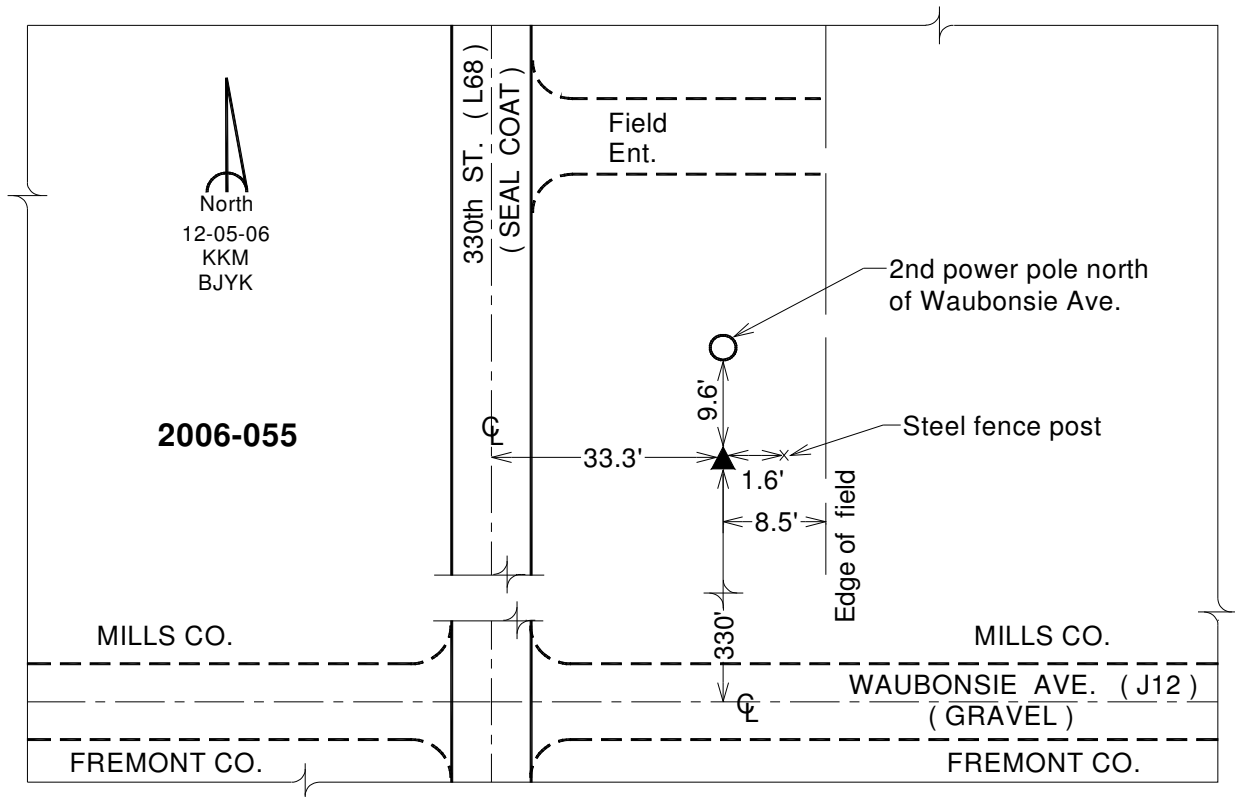
NAD 83(NA2011) Latitude: **N40°54'09.06586"** Longitude: **W95°33'22.38895"**
 NAVD 88 Ortho Height: **977.930**sft Ellip. Ht: **881.945**sft **Geoid12A**

Note: See the Mills Co. 2013 Report for current height values.

Iowa South Zone (1402) Northing: **335532.890**sft Easting: **1072070.462**sft
 Mapping Angle: **-1°21'16"** Combination Scale Factor: **0.999919773**

laRCS Zone 6 Northing: **6837785.939**sft Easting: **16548963.331**sft
 Mapping Angle: **0°06'57"** Combination Scale Factor: **0.999999654**

Monument Type: Berntsen 3/4" Top Security Rod Monument with a 2-1/2" dia. domed survey cap and permanent magnet encased in a white PVC pipe with a NGS style alum. access cover.



This document was prepared by DCI on January 9, 2015 for use by Fremont County, Iowa