

Fremont County, Iowa
Horizontal Datum: **NAD 83(2011)** - Vertical Datum: **NAVD 1988**
Iowa State Plane South Zone (1402)
Iowa Regional Coordinate System Zone 6 Council Bluffs
US Survey Feet
2015

Point Name: **3056**

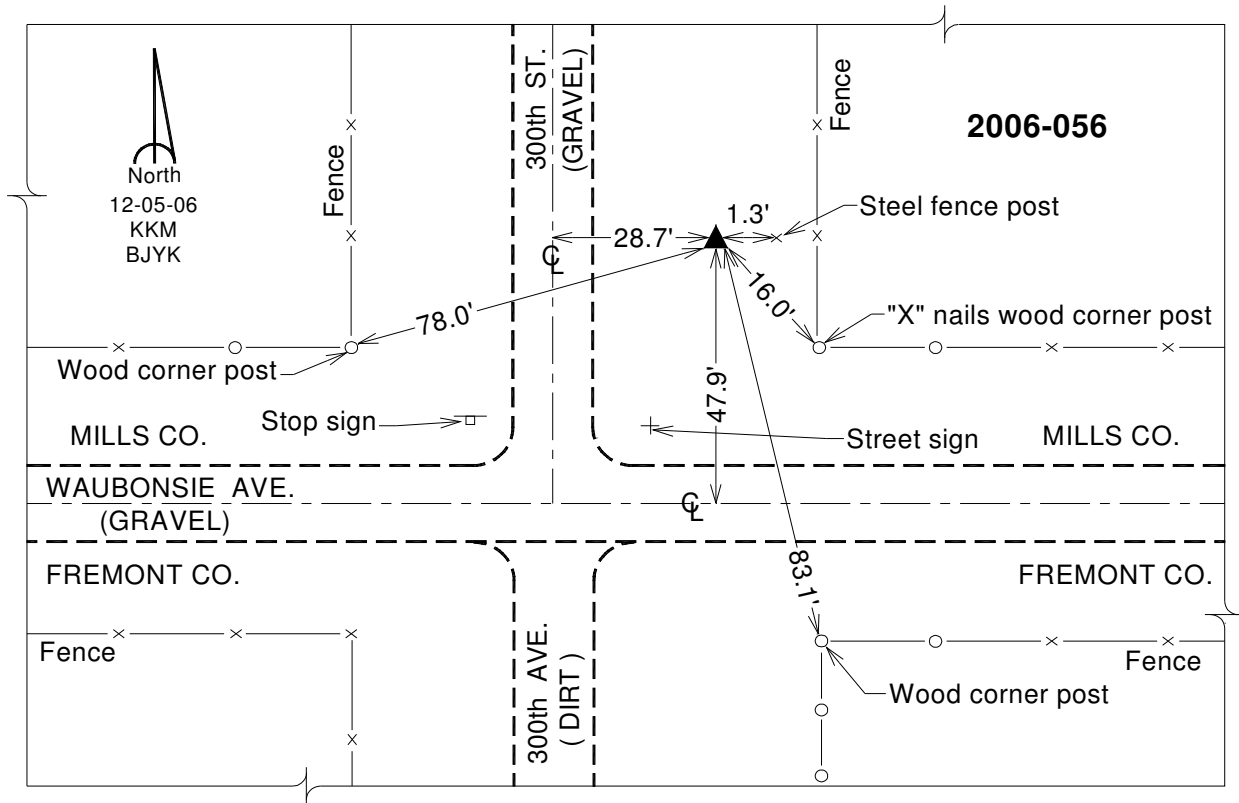
Designation: 2006-056 Mills Co (2010 Fremont Co. GPS observations)

NAD 83(NA2011) Latitude: **N40°54'06.24958"** Longitude: **W95°36'50.91168"**
NAVD 88 Ortho Height: **1097.630sft** Ellip. Ht: **1002.485sft** **Geoid12A**

Iowa South Zone (1402) Northing: **335631.757sft** Easting: **1056056.529sft**
Mapping Angle: **-1°23'33"** Combination Scale Factor: **0.999914092**

IaRCS Zone 6 Northing: **6837473.791sft** Easting: **16532950.869sft**
Mapping Angle: **0°04'41"** Combination Scale Factor: **0.999992403**

Monument Type: Berntsen 3/4" Top Security Rod Monument with a 2-1/2" dia. domed survey cap and permanent magnet encased in a white PVC pipe with a NGS style alum. access cover.



This document was prepared by DCI on January 9, 2015 for use by Fremont County, Iowa