

Fremont County, Iowa

Horizontal Datum: **NAD 83(2011)** - Vertical Datum: **NAVD 1988**
Iowa State Plane South Zone (1402)
Iowa Regional Coordinate System Zone 6 Council Bluffs
US Survey Feet
2015

Point Name: **3058**

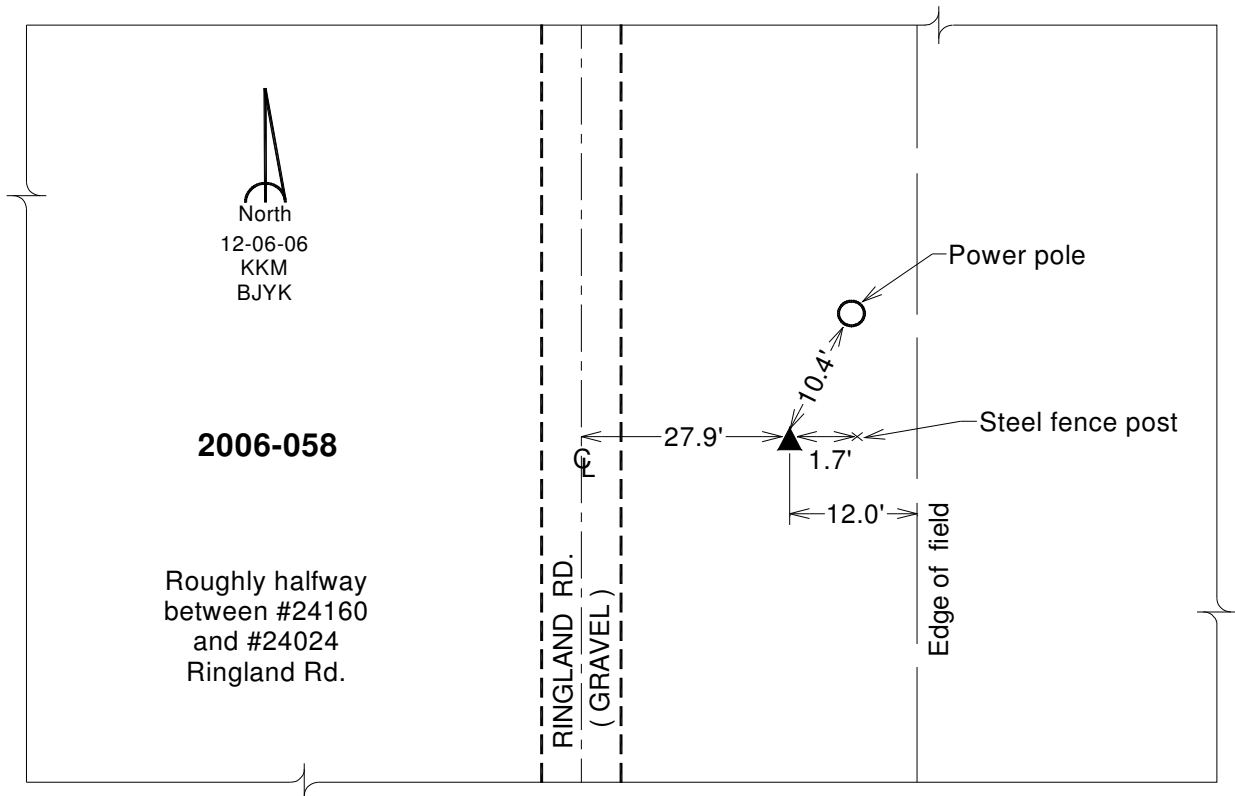
Designation: 2006-058 Mills Co (2010 Fremont Co. GPS observations)

NAD 83(NA2011) Latitude: **N40°54'10.00585"** Longitude: **W95°43'08.20575"**
NAVD 88 Ortho Height: **1159.760sft** Ellip. Ht: **1066.248sft** **Geoid12A**

Iowa South Zone (1402) Northing: **336733.308sft** Easting: **1027104.003sft**
Mapping Angle: **-1°27'42"** Combination Scale Factor: **0.999910955**

IaRCS Zone 6 Northing: **6837831.850sft** Easting: **16503977.359sft**
Mapping Angle: **0°00'34"** Combination Scale Factor: **0.999988138**

Monument Type: Berntsen 3/4" Top Security Rod Monument with a 2-1/2" dia. domed survey cap and permanent magnet encased in a white PVC pipe with a NGS style alum. access cover.



This document was prepared by DCI on January 9, 2015 for use by Fremont County, Iowa