

Fremont County, Iowa
Horizontal Datum: **NAD 83(2011)** - Vertical Datum: **NAVD 1988**
Iowa State Plane South Zone (1402)
Iowa Regional Coordinate System Zone 6 Council Bluffs
US Survey Feet
2015

Point Name: **3060 (Destroyed)**

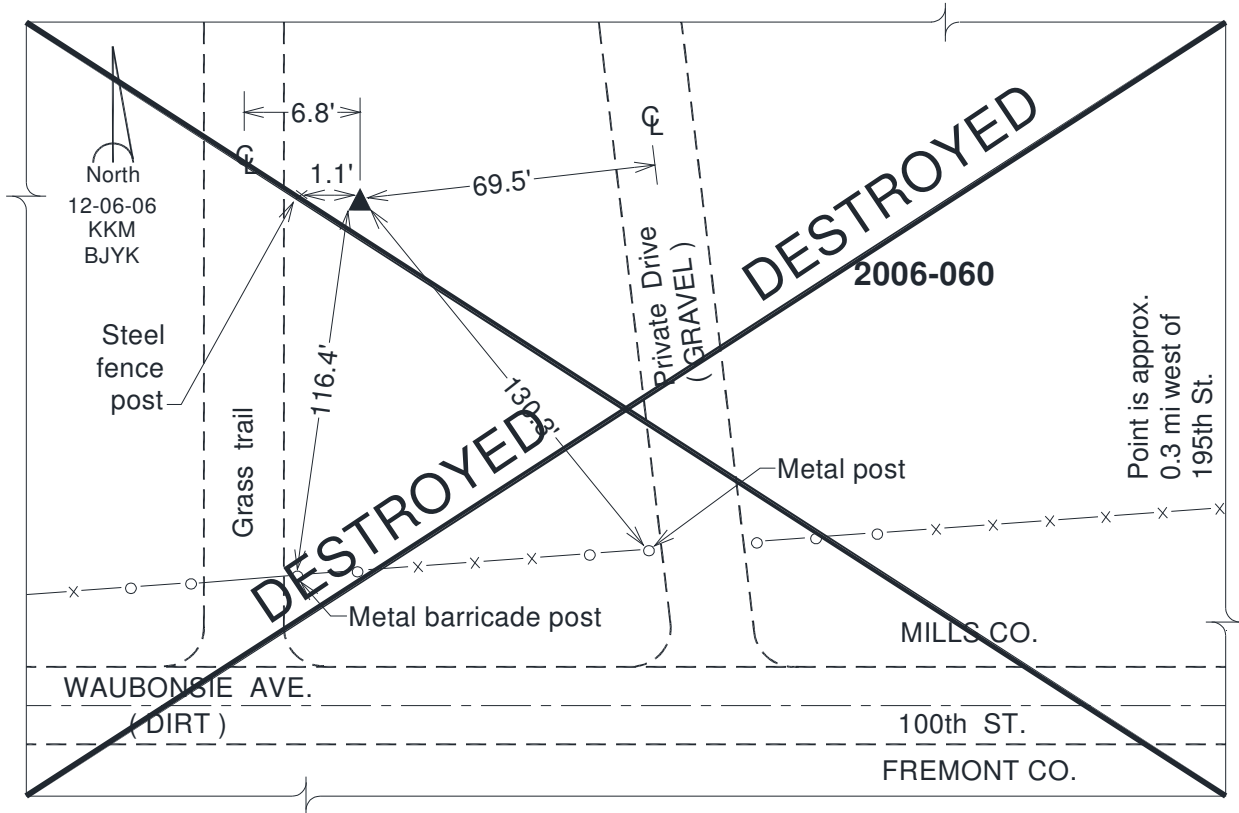
Designation: ~~2006-060 Mills Co (2010 Fremont Co. GPS observations)~~

NAD 83(NA2011) Latitude: ~~**N40°54'06.76808"**~~ Longitude: ~~**W95°48'35.52435"**~~
NAVD 88 Ortho Height: ~~**954.630sft**~~ Ellip. Ht: ~~**862.415sft**~~ **Geoid12A**

Iowa South Zone (1402) Northing: ~~**337059.970sft**~~ Easting: ~~**1001970.464sft**~~
Mapping Angle: ~~**-1°31'17"**~~ Combination Scale Factor: ~~**0.999920762**~~

IaRCS Zone 6 Northing: ~~**6837513.080sft**~~ Easting: ~~**16478841.776sft**~~
Mapping Angle: ~~**-0°03'00"**~~ Combination Scale Factor: ~~**0.999998358**~~

Monument Type: ~~Berntsen 3/4" Top Security Rod Monument with a 2-1/2" dia. domed survey cap and permanent magnet encased in a white PVC pipe with a NGS style alum. access cover.~~



This document was prepared by DCI on January 9, 2015 for use by Fremont County, Iowa