

# GPS SURVEY MARK DESCRIPTION

GIS MAPPING BY:  
THE SIDWELL COMPANY  
WEST CHICAGO, ILLINOIS

THE OFFICE OF THE  
COUNTY ENGINEER  
GREENE COUNTY, IOWA

DESIGNATION 853021 1 GPS No. A010 COUNTY GREENE STATE IOWA

LOCATED IN SECTION 21 TWP 85 N RGE 30 W USGS QUAD MAP PATON

TO REACH FROM \_\_\_\_\_

AT THE "T" INTERSECTION OF 130TH STREET /E18 AND ON THE SOUTH PROD. OF P AVENUE NEAR  
THE CENTERLINE OF A WIDE FIELD ENTRANCE TO THE SOUTH.

IN DAWSON TOWNSHIP

MARK 3-1/4" ALUMINUM DISC SET IN 10" DIAMETER POURED-IN-PLACE CONCRETE MONUMENT

MARK EXISTING  VALUES AS PUBLISHED BY \_\_\_\_\_

MARK SET  VALUES ESTABLISHED BY DENI ASSOCIATES, INC. DATE OCTOBER 2000

HORIZONTAL VALUES ORIGINATED ON ORDER "B" IOWA HIGH ACCURACY REFERENCE NETWORK (HARN) CONTROL ESTABLISHED BY THE NATIONAL GEODETIC SURVEY AND BASED ON THE NORTH AMERICAN DATUM OF 1983, 1996 ADJUSTMENT.

IOWA COORDINATE SYSTEM, NORTH ZONE SCALE FACTOR: 0.99998347

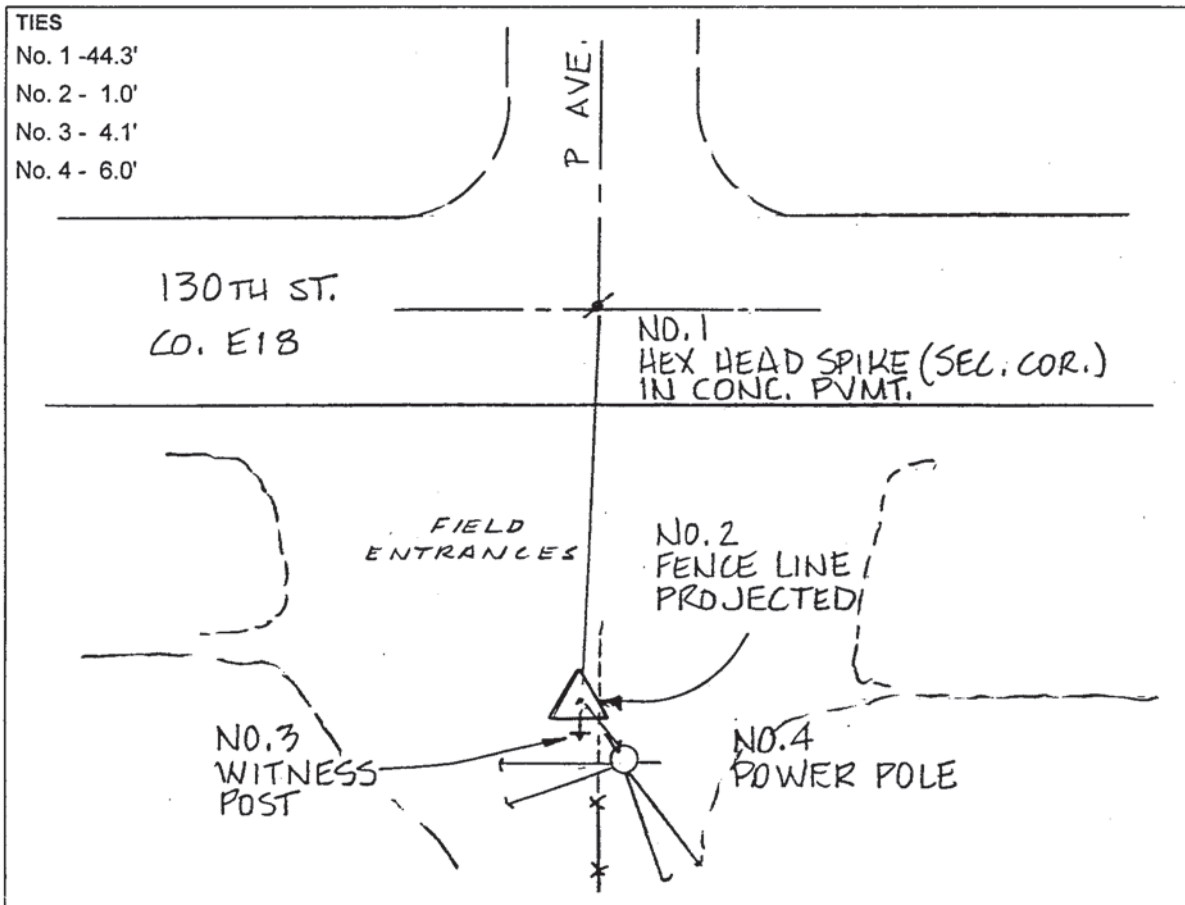
COORDINATES (US FEET) COORDINATES (METERS)

NORTHING (Y) 3524637.35 NORTHING (Y) 1074311.612

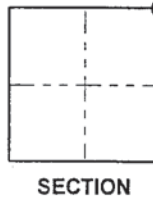
EASTING (X) 4693666.16 EASTING (X) 1430632.307

VERTICAL VALUES ORIGINATED ON VERTICAL CONTROL ESTABLISHED BY THE NATIONAL GEODETIC SURVEY AND / OR THE U.S. GEOLOGICAL SURVEY AND BASED ON THE NORTH AMERICAN VERTICAL DATUM OF 1988.

ELEVATION (US FEET) 1086.90 ELEVATION (METERS) 331.29



- TIES  
No. 1 - 44.3'  
No. 2 - 1.0'  
No. 3 - 4.1'  
No. 4 - 6.0'



SKETCH  
BY DSW  
20000204