

GPS SURVEY MARK DESCRIPTION

GIS MAPPING BY:
THE SIDWELL COMPANY
WEST CHICAGO, ILLINOIS

THE OFFICE OF THE
COUNTY ENGINEER
GREENE COUNTY, IOWA

DESIGNATION 833118 3 GPS No. A043 COUNTY GREENE STATE IOWA
 LOCATED IN SECTION 18 TWP 83 N RGE 31 W USGS QUAD MAP COON RAPIDS NE
 TO REACH FROM THE INTERSECTION OF 250TH STREET AND G AVENUE; GO NORTH 400'+/- TO THE
NORTHWEST CORNER OF A FARM COMPLEX AND THE MARK TO THE EAST.

IN JACKSON TOWNSHIP

MARK 3-1/4" ALUMINUM DISC SET IN 10" DIAMETER POURED-IN-PLACE CONCRETE MONUMENT

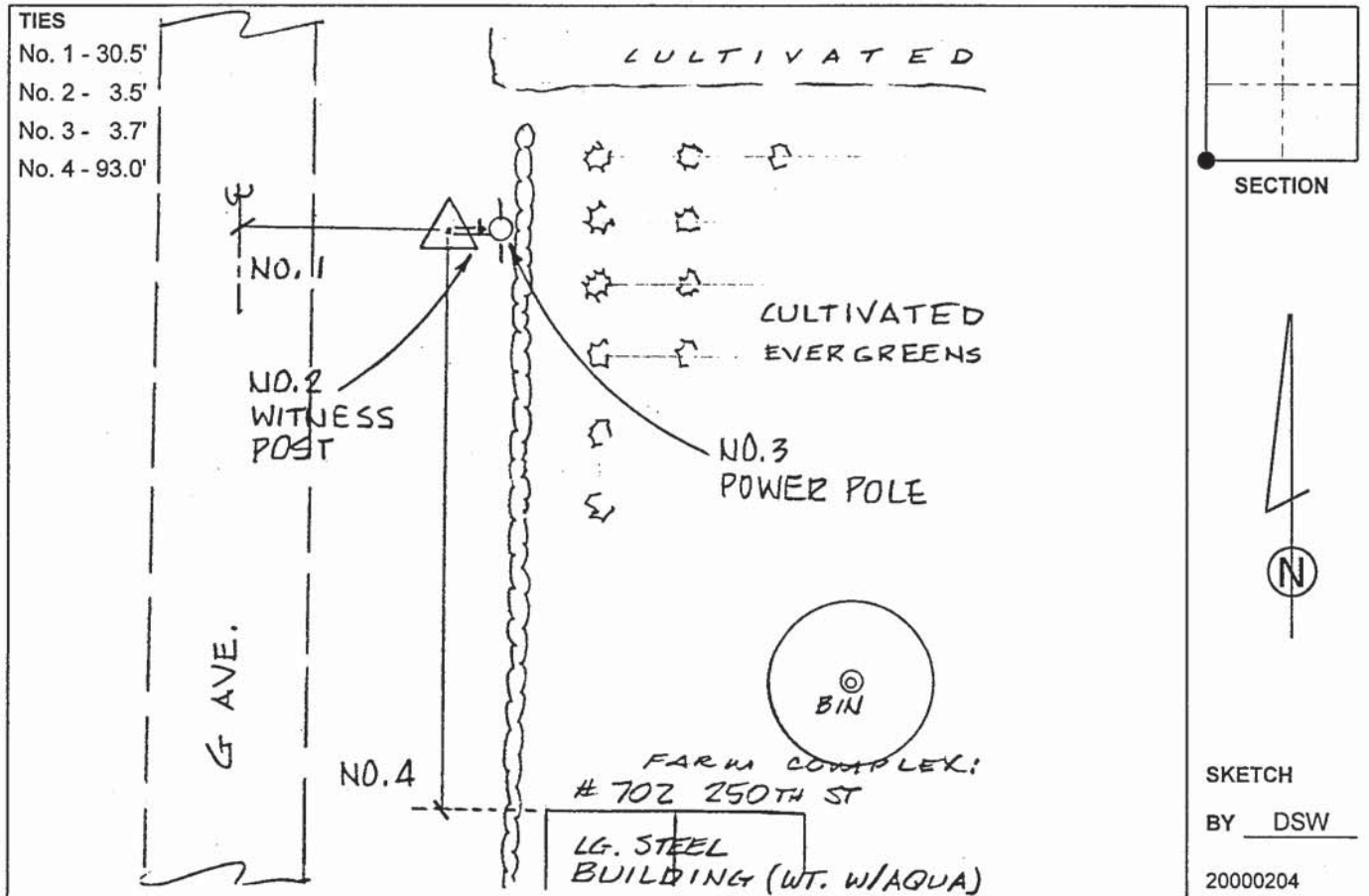
MARK EXISTING VALUES AS PUBLISHED BY _____
 MARK SET VALUES ESTABLISHED BY DENI ASSOCIATES, INC. DATE OCTOBER 2000

HORIZONTAL VALUES ORIGINATED ON ORDER "B" IOWA HIGH ACCURACY REFERENCE NETWORK (HARN) CONTROL ESTABLISHED BY THE NATIONAL GEODETIC SURVEY AND BASED ON THE NORTH AMERICAN DATUM OF 1983, 1996 ADJUSTMENT.

IOWA COORDINATE SYSTEM, NORTH ZONE		SCALE FACTOR: <u>1.00001379</u>
COORDINATES (US FEET)		COORDINATES (METERS)
NORTHING (Y) <u>3462854.85</u>		NORTHING (Y) <u>1055480.268</u>
EASTING (X) <u>4645977.24</u>		EASTING (X) <u>1416096.696</u>

VERTICAL VALUES ORIGINATED ON VERTICAL CONTROL ESTABLISHED BY THE NATIONAL GEODETIC SURVEY AND/OR THE U.S. GEOLOGICAL SURVEY AND BASED ON THE NORTH AMERICAN VERTICAL DATUM OF 1988.

ELEVATION (US FEET) 1161.33 ELEVATION (METERS) 353.98



SKETCH BY DSW
20000204