

Greene County, Iowa
 Iowa North Zone (1401)
 Horiz. Datum: Iowa Harn, NAD83(1996)
 Vert. Datum: NAVD 1988
 US Survey Feet
2008

GPS No. **A086**

Designation: 2008-086 Greene Co GPS Control Pt

Northing: **3465205.90**sft Easting: **4682850.84**sft

Orthometric Height: **1058.83**sft Ellipsoid Height: **969.83**sft **Geoid03**

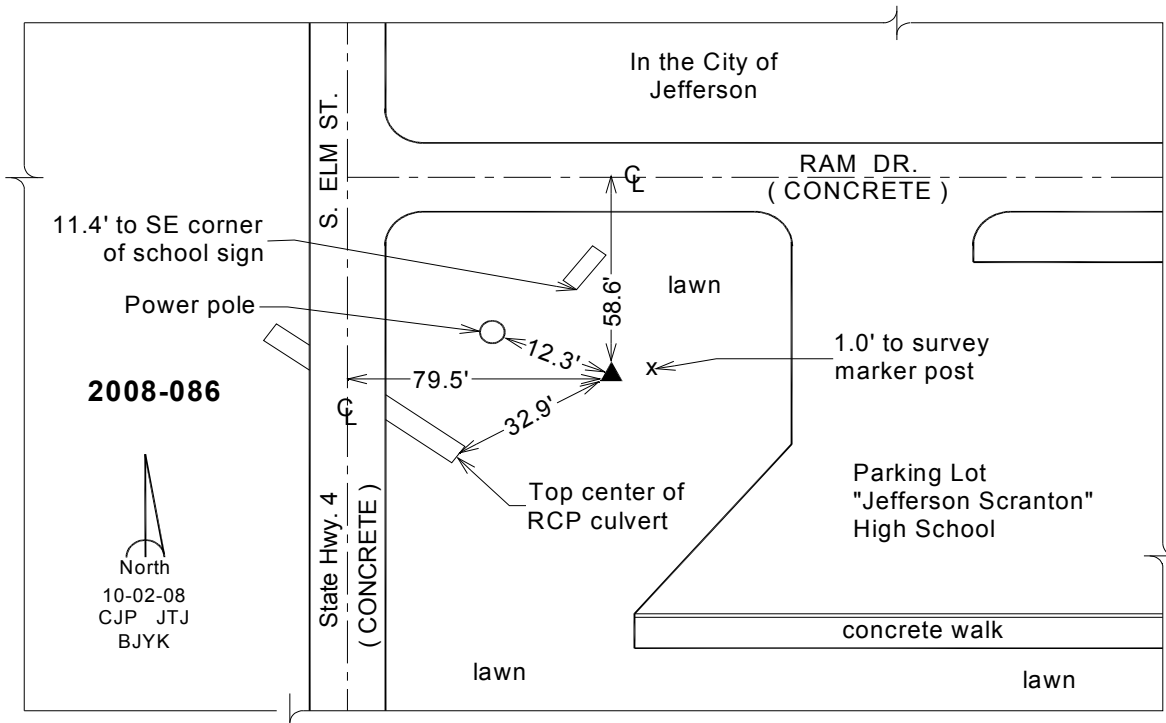
Latitude: **42°00'09.12381"N**

Longitude: **94°22'37.52096"W**

Mapping Angle: **-0°35'40"**

Combination Scale Factor: **0.9999659800**

Monument Type: Berntsen 3/4" Top Security Rod Monument with a 2-1/2" dia. domed survey cap and permanent magnet encased in a white PVC pipe with a NGS style alum. access cover.



This document was prepared by DCI and GBC for use by Greene County, Iowa.