

Greene County, Iowa
Iowa North Zone (1401)
Horiz. Datum: Iowa Harn, NAD83(1996)
Vert. Datum: NAVD 1988
US Survey Feet
2008

GPS No. **A087**

Designation: 2008-087 Greene Co GPS Control Pt

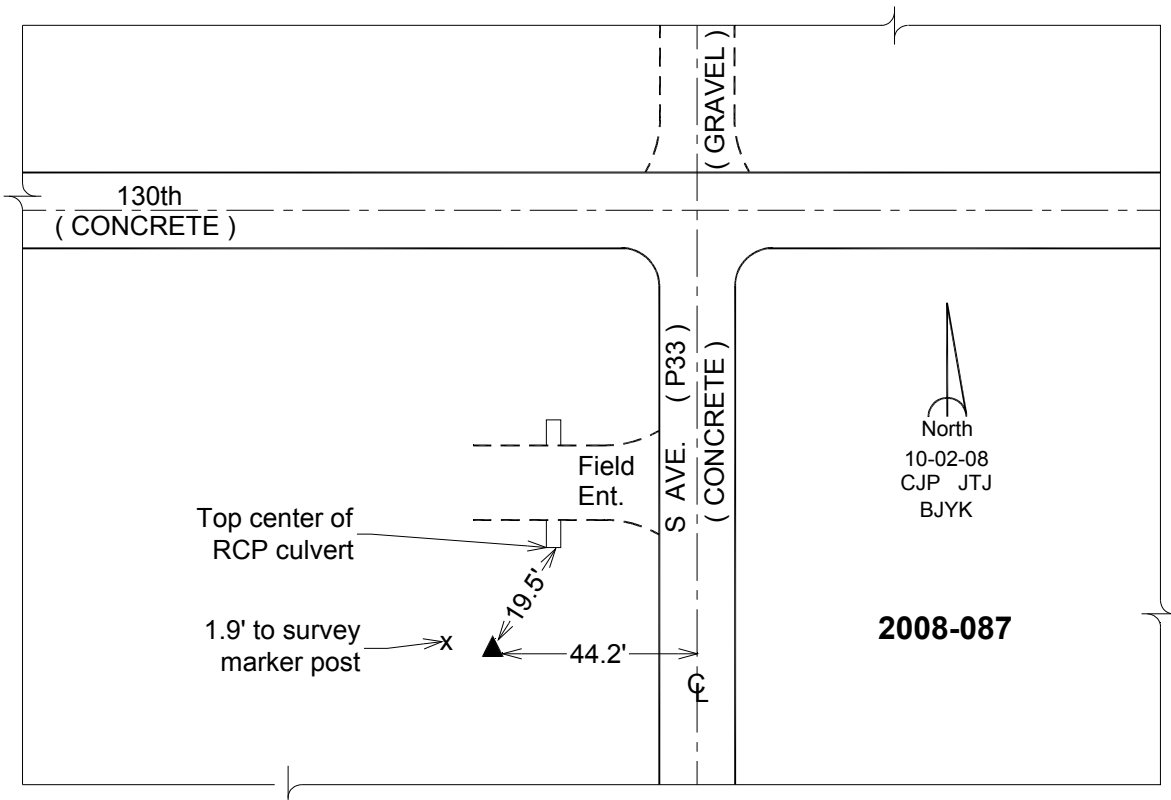
Northing: **3524356.57**sft Easting: **4709425.40**sft

Orthometric Height: **1090.44**sft Ellipsoid Height: **1001.70**sft **Geoid03**

Latitude: **42°09'56.00747"N** Longitude: **94°16'52.81125"W**

Mapping Angle: **-0°31'46"** Combination Scale Factor: **0.9999357300**

Monument Type: Berntsen 3/4" Top Security Rod Monument with a 2-1/2" dia. domed survey cap and permanent magnet encased in a white PVC pipe with a NGS style alum. access cover.



This document was prepared by DCI and GBC for use by Greene County, Iowa.