

Greene County, Iowa
 Iowa North Zone (1401)
 Horiz. Datum: Iowa Harn, NAD83(1996)
 Vert. Datum: NAVD 1988
 US Survey Feet
2008

GPS No. **A089**

Designation: 2008-089 Greene Co GPS Control Pt

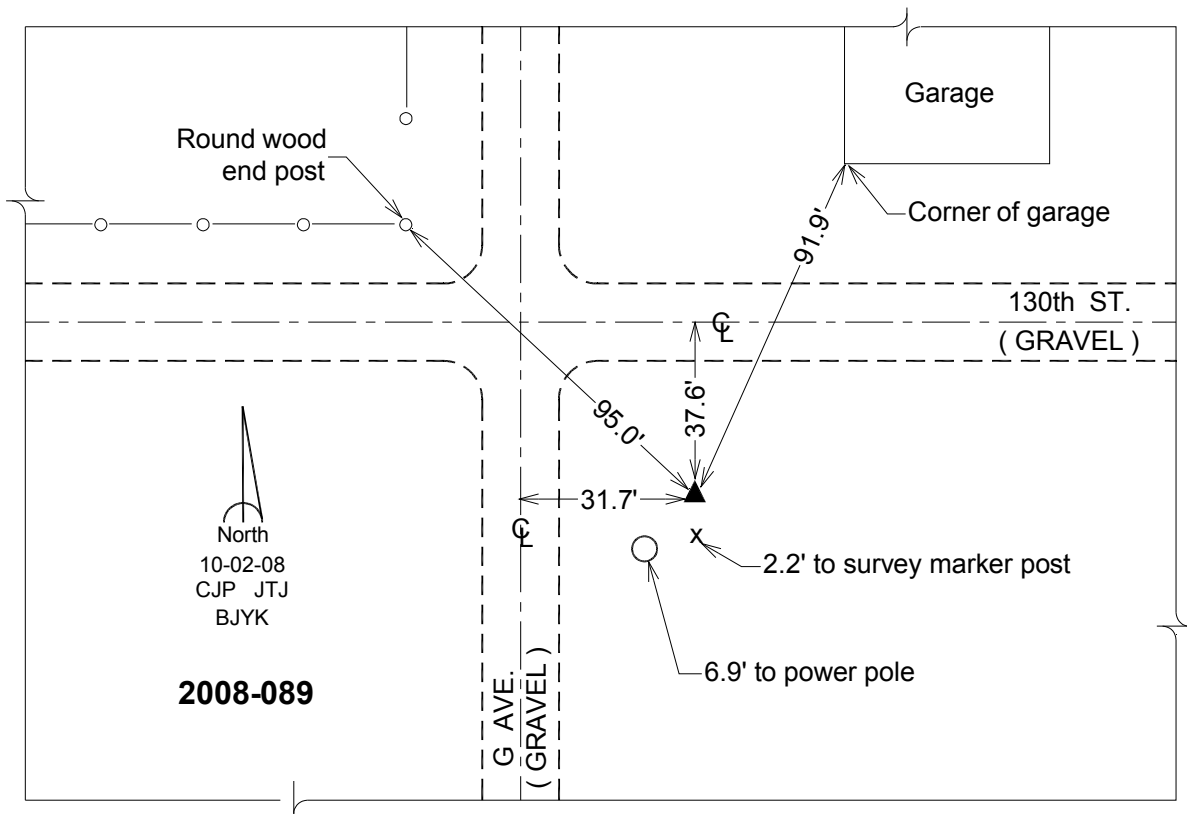
Northing: **3525193.69**sft Easting: **4646673.39**sft

Orthometric Height: **1139.24**sft Ellipsoid Height: **1048.19**sft **Geoid03**

Latitude: **42°09'57.69872"N** Longitude: **94°30'46.15547"W**

Mapping Angle: **-0°41'11"** Combination Scale Factor: **0.9999334400**

Monument Type: Berntsen 3/4" Top Security Rod Monument with a 2-1/2" dia. domed survey cap and permanent magnet encased in a white PVC pipe with a NGS style alum. access cover.



This document was prepared by DCI and GBC for use by Greene County, Iowa.