

**Greene County, Iowa**  
Iowa North Zone (1401)  
Horiz. Datum: Iowa Harn, NAD83(1996)  
Vert. Datum: NAVD 1988  
US Survey Feet  
**2008**

GPS No. **A091**

**Designation:** 2008-091 Greene Co GPS Control Pt

Northing: **3444795.90**sft Easting: **4693293.31**sft

Orthometric Height: **1086.88**sft Ellipsoid Height: **997.45**sft **Geoid03**

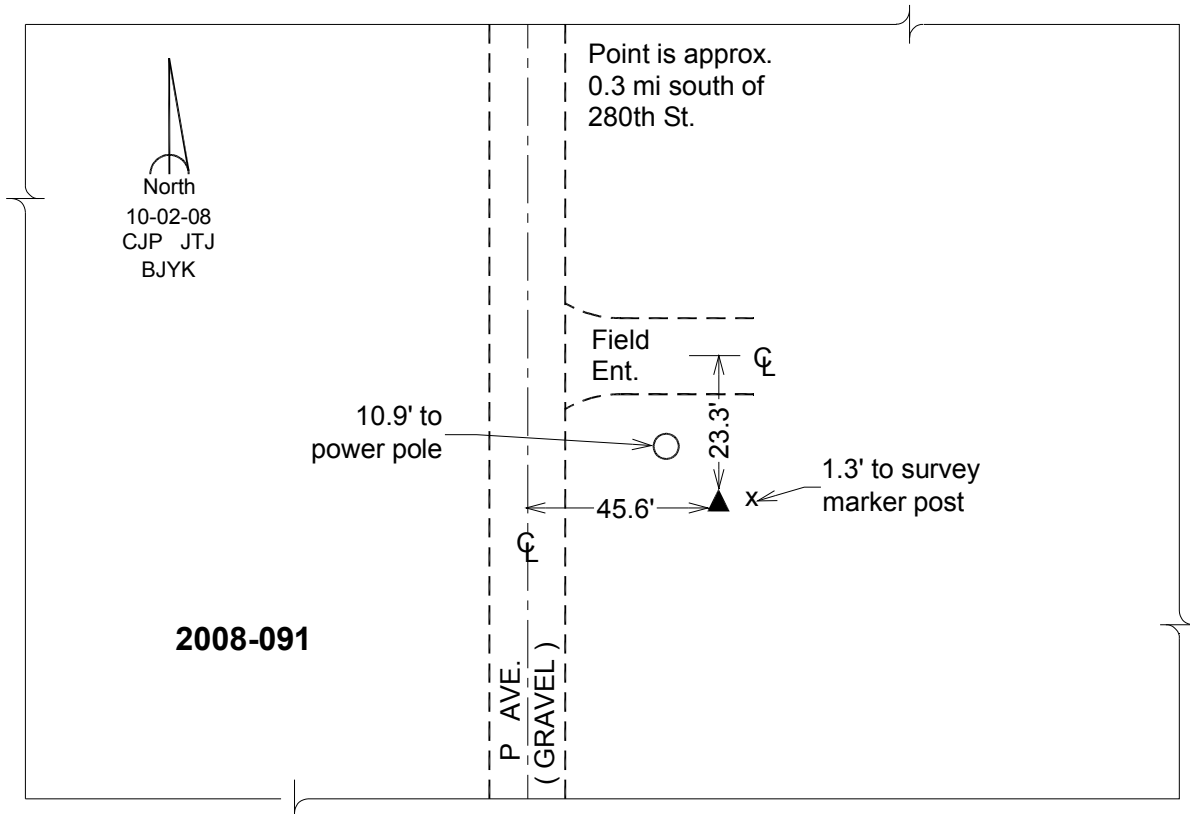
Latitude: **41°56'48.55477"N**

Longitude: **94°20'16.54385"W**

Mapping Angle: **-0°34'04"**

Combination Scale Factor: **0.9999763200**

**Monument Type:** Berntsen 3/4" Top Security Rod Monument with a 2-1/2" dia. domed survey cap and permanent magnet encased in a white PVC pipe with a NGS style alum. access cover.



*This document was prepared by DCI and GBC for use by Greene County, Iowa.*