

Greene County, Iowa
 Iowa North Zone (1401)
 Horiz. Datum: Iowa Harn, NAD83(1996)
 Vert. Datum: NAVD 1988
 US Survey Feet
2008

GPS No. **A092**

Designation: 2008-092 Greene Co GPS Control Pt

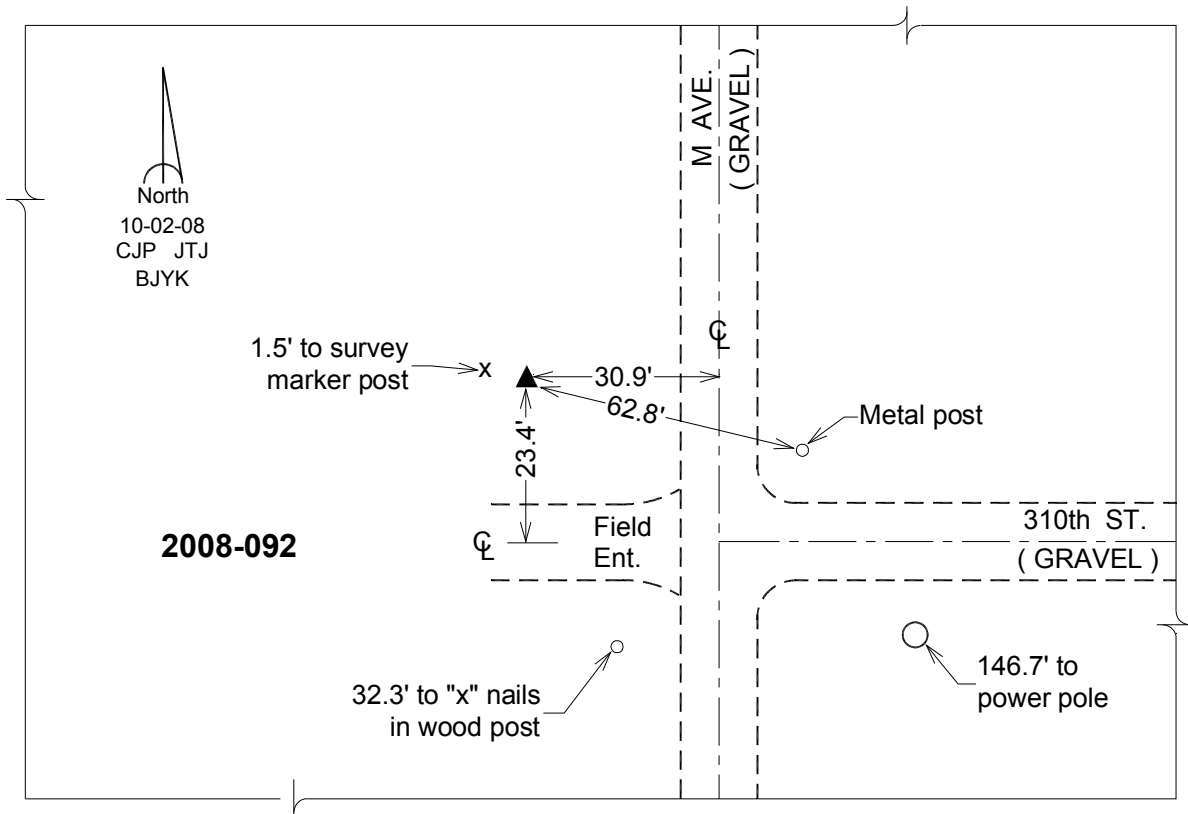
Northing: **3430273.28**sft Easting: **4677151.35**sft

Orthometric Height: **1124.46**sft Ellipsoid Height: **1034.86**sft **Geoid03**

Latitude: **41°54'23.46106"N** Longitude: **94°23'48.09603"W**

Mapping Angle: **-0°36'28"** Combination Scale Factor: **0.9999835400**

Monument Type: Berntsen 3/4" Top Security Rod Monument with a 2-1/2" dia. domed survey cap and permanent magnet encased in a white PVC pipe with a NGS style alum. access cover.



This document was prepared by DCI and GBC for use by Greene County, Iowa.