

Grundy County, Iowa
 Horizontal Datum: **NAD 83(NA2011)** - Vertical Datum: **NAVD 1988**
 Iowa State Plane North Zone (1401)
 Iowa Regional Coordinate System, Zone 5, Waterloo LCC
 US Survey Feet
09/30/18

Point Name: **7001**

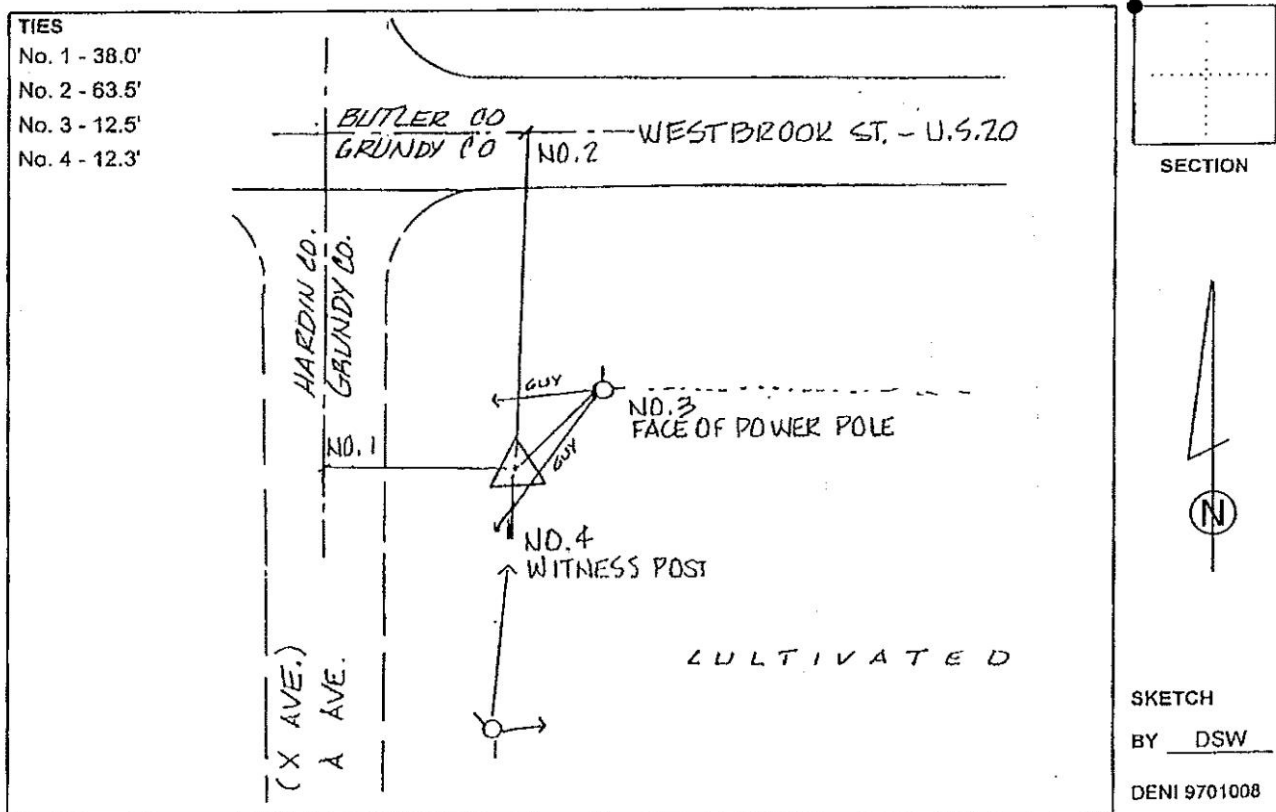
Designation: Grundy Co 7001 (Set by Deni Associates in 1997)

NAD 83(NA2011) Latitude: **N42°33'23.87533"** Longitude: **W93°01'36.68332"**
 NAVD 88 Ortho Height: **1068.540sft** Ellip. Ht: **965.533sft** **Geoid12B**

Iowa North Zone (1401) Northing: **3666250.502sft** Easting: **5048725.340sft**
 Mapping Angle: **0°19'14"** Combination Scale Factor: **0.9999010868**

IaRCS Zone 5 Northing: **8866932.245sft** Easting: **15290681.498sft**
 Mapping Angle: **-0°31'35"** Combination Scale Factor: **0.9999871682**

Monument Type: 3-1/4" aluminum disk set in the top of a 12" dia. poured-in-place concrete monument.



This document was prepared by Dan Corbin, Inc. on March 11th, 2019 for Grundy County, Iowa.