

Grundy County, Iowa
Horizontal Datum: **NAD 83(NA2011)** - Vertical Datum: **NAVD 1988**
Iowa State Plane North Zone (1401)
Iowa Regional Coordinate System, Zone 5, Waterloo LCC
US Survey Feet
09/30/18

Point Name: **7002**

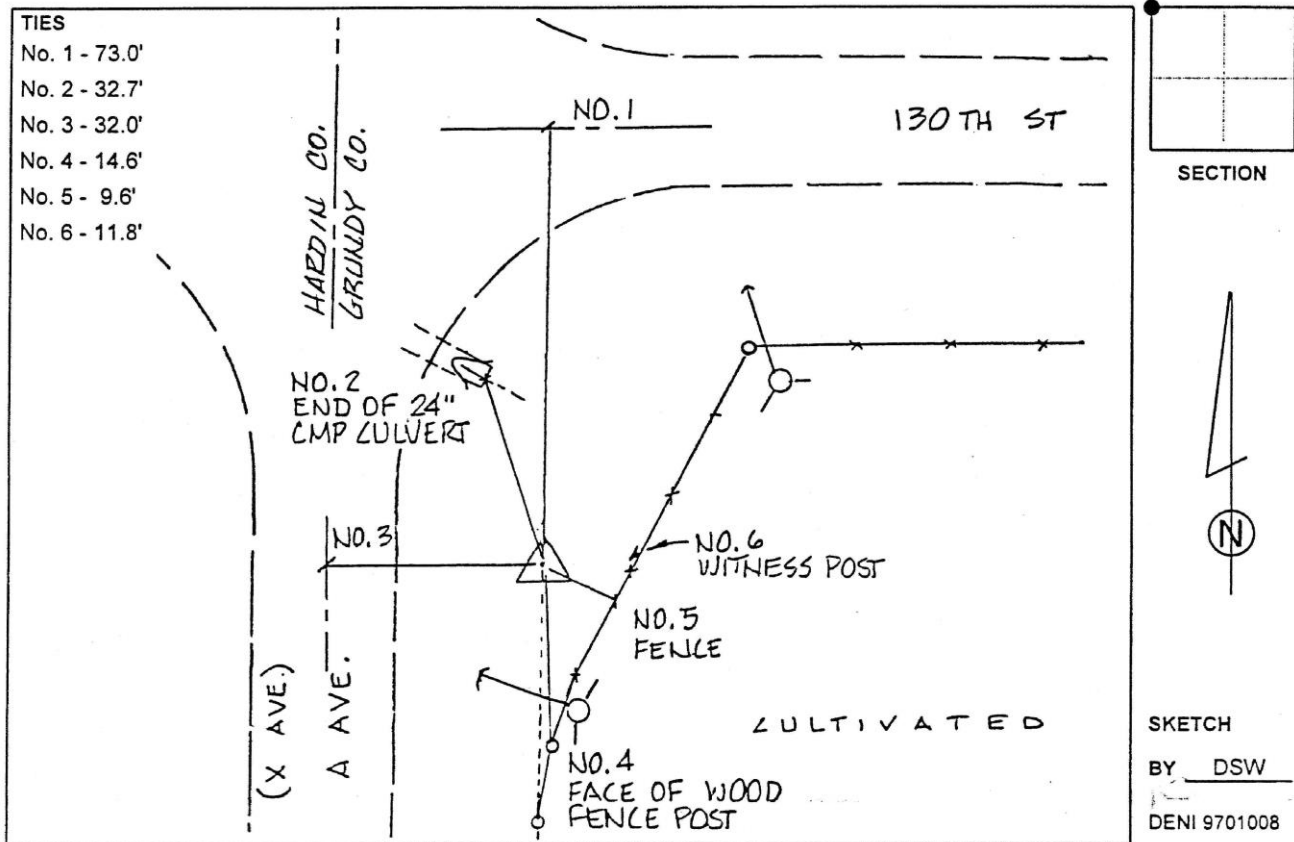
Designation: Grundy Co 7002 (Set by Deni Associates in 1997)

NAD 83(NA2011) Latitude: **N42°30'50.79792"** Longitude: **W93°01'35.83617"**
NAVD 88 Ortho Height: **1090.740sft** Ellip. Ht: **987.435sft** **Geoid12B**

Iowa North Zone (1401) Northing: **3650755.067sft** Easting: **5048875.510sft**
Mapping Angle: **0°19'15"** Combination Scale Factor: **0.9999017448**

IaRCS Zone 5 Northing: **8851434.951sft** Easting: **15290602.583sft**
Mapping Angle: **-0°31'34"** Combination Scale Factor: **0.9999875990**

Monument Type: 3-1/4" aluminum disk set in the top of a 12" dia. poured-in-place concrete monument.



This document was prepared by Dan Corbin, Inc. on March 11th, 2019 for Grundy County, Iowa.