

Grundy County, Iowa

Horizontal Datum: **NAD 83(NA2011)** - Vertical Datum: **NAVD 1988**

Iowa State Plane North Zone (1401)

Iowa Regional Coordinate System, Zone 5, Waterloo LCC

US Survey Feet

09/30/18

Point Name: **7003**

Designation: Grundy Co 7003 (Set by Deni Associates in 1997)

NAD 83(NA2011) Latitude: **N42°28'15.01066"** Longitude: **W93°01'23.54531"**

NAVD 88 Ortho Height: **1070.810sft** Ellip. Ht: **967.244sft** **Geoid12B**

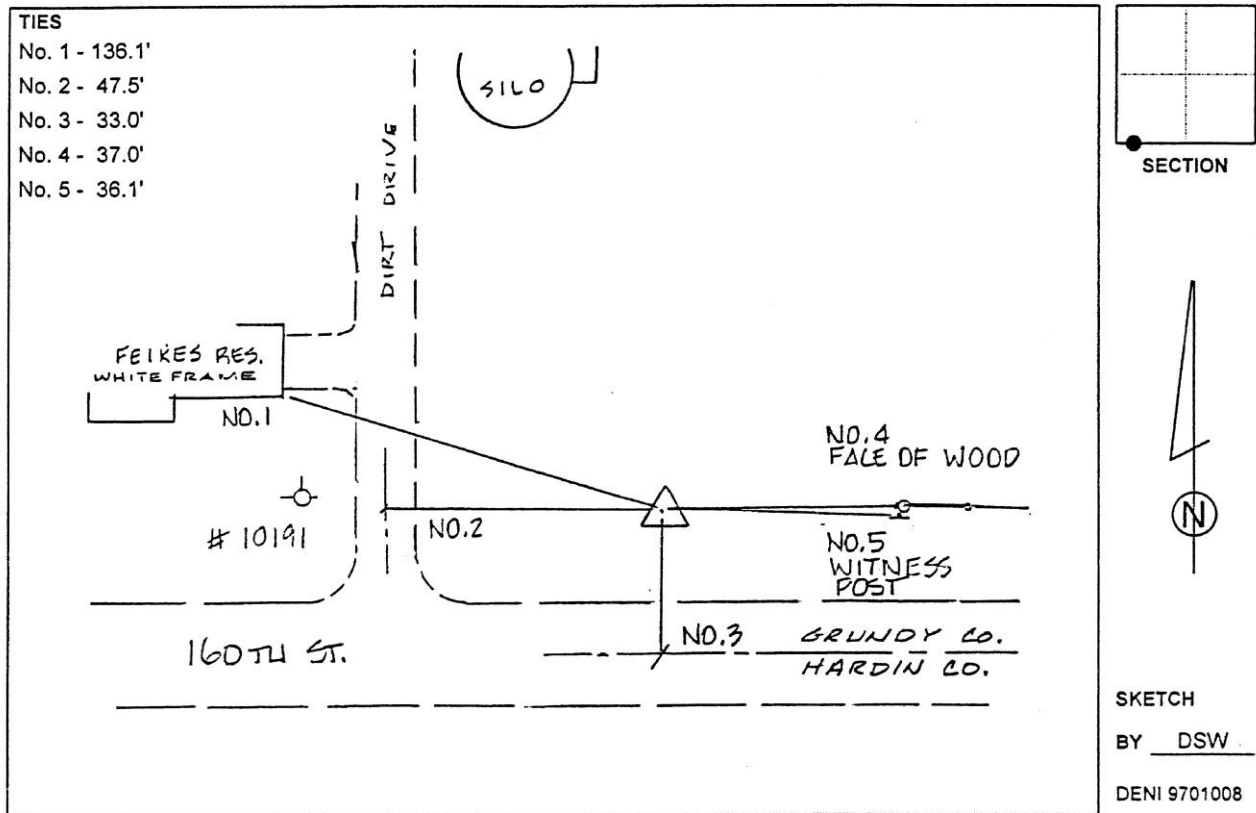
Iowa North Zone (1401) Northing: **3634990.227sft** Easting: **5049884.910sft**

Mapping Angle: **0°19'23"** Combination Scale Factor: **0.9999050069**

IaRCS Zone 5 Northing: **8835655.560sft** Easting: **15291378.897sft**

Mapping Angle: **-0°31'26"** Combination Scale Factor: **0.9999906302**

Monument Type: 3-1/4" aluminum disk set in the top of a 12" dia. poured-in-place concrete monument.



This document was prepared by Dan Corbin, Inc. on March 11th, 2019 for Grundy County, Iowa.