

Grundy County, Iowa
 Horizontal Datum: **NAD 83(NA2011)** - Vertical Datum: **NAVD 1988**
 Iowa State Plane North Zone (1401)
 Iowa Regional Coordinate System, Zone 5, Waterloo LCC
 US Survey Feet
09/30/18

Point Name: **7004**

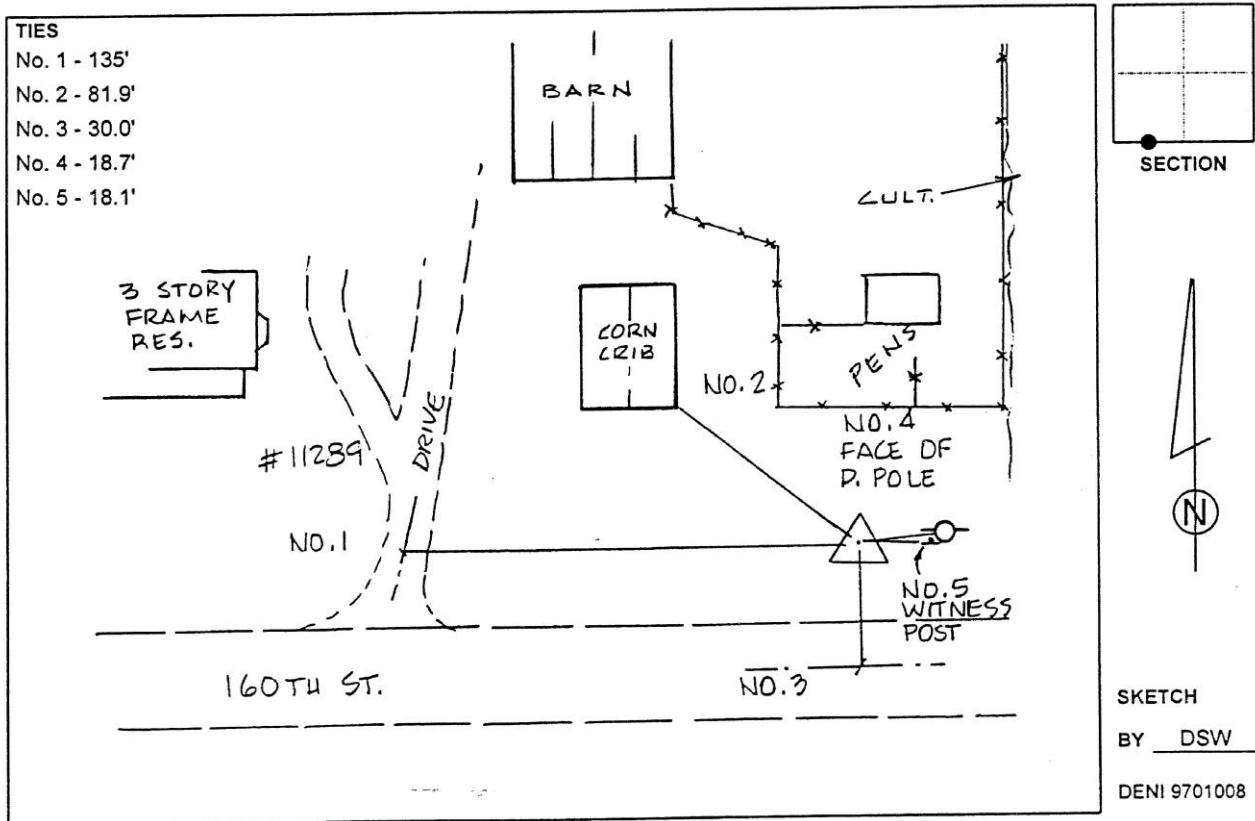
Designation: Grundy Co 7004 (Set by Deni Associates in 1997)

NAD 83(NA2011) Latitude: **N42°28'14.57098"** Longitude: **W93°00'02.19757"**
 NAVD 88 Ortho Height: **1056.898sft** Ellip. Ht: **953.073sft** **Geoid12B**

Iowa North Zone (1401) Northing: **3634980.918sft** Easting: **5055981.483sft**
 Mapping Angle: **0°20'18"** Combination Scale Factor: **0.9999056915**

IaRCS Zone 5 Northing: **8835556.120sft** Easting: **15297475.188sft**
 Mapping Angle: **-0°30'31"** Combination Scale Factor: **0.9999913142**

Monument Type: 3-1/4" aluminum disk set in the top of a 12" dia. poured-in-place concrete monument.



This document was prepared by Dan Corbin, Inc. on March 11th, 2019 for Grundy County, Iowa.