

**Grundy County, Iowa**  
 Horizontal Datum: **NAD 83(NA2011)** - Vertical Datum: **NAVD 1988**  
 Iowa State Plane North Zone (1401)  
 Iowa Regional Coordinate System, Zone 5, Waterloo LCC  
 US Survey Feet  
**09/30/18**

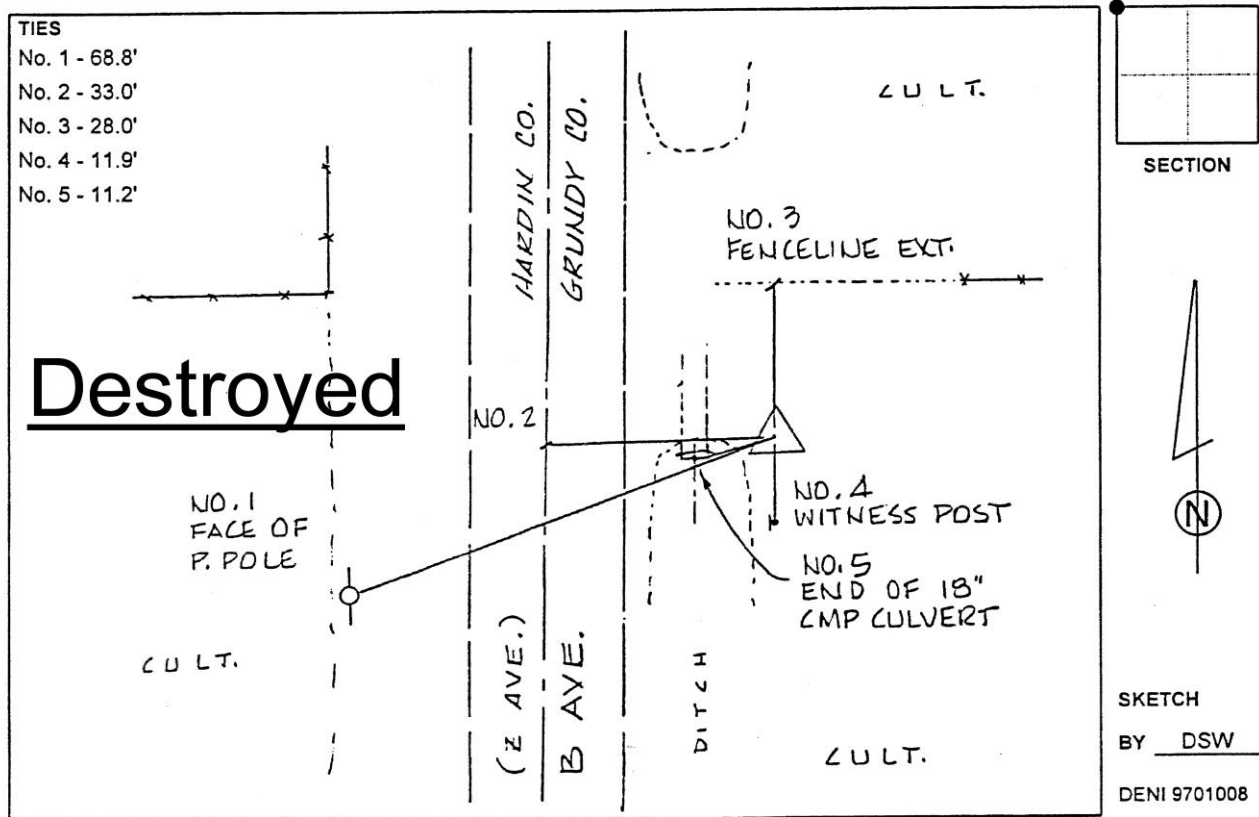
Point Name: **7005 (Destroyed)**

**Designation:** Grundy Co 7005 (Set by Deni Associates in 1997)

NAD 83(1996) Latitude: ~~42-25-35.88009N~~ Longitude: ~~93-00-09.65823W~~  
 NAVD 88 Ortho Height: ~~1117.000~~sft Ellip. Ht: ~~1013.387~~sft

**Iowa North Zone (1401)** Northing: ~~3618913.780~~sft Easting: ~~5055516.870~~sft  
 Mapping Angle: ~~0-20-13.3~~ Combination Scale Factor: ~~0.9999541700~~

**Monument Type:** 3-1/4" aluminum disk set in the top of a 12" dia. poured-in-place concrete monument.



*This document was prepared by Dan Corbin, Inc. on March 11<sup>th</sup>, 2019 for Grundy County, Iowa.*