

**Grundy County, Iowa**

Horizontal Datum: **NAD 83(NA2011)** - Vertical Datum: **NAVD 1988**

Iowa State Plane North Zone (1401)

Iowa Regional Coordinate System, Zone 5, Waterloo LCC

US Survey Feet

**09/30/18**

Point Name: **7006**

**Designation:** Grundy Co 7006 (Set by Deni Associates in 1997)

NAD 83(NA2011) Latitude: **N42°23'00.73055"** Longitude: **W93°00'07.77493"**

NAVD 88 Ortho Height: **1071.521sft** Ellip. Ht: **967.593sft** **Geoid12B**

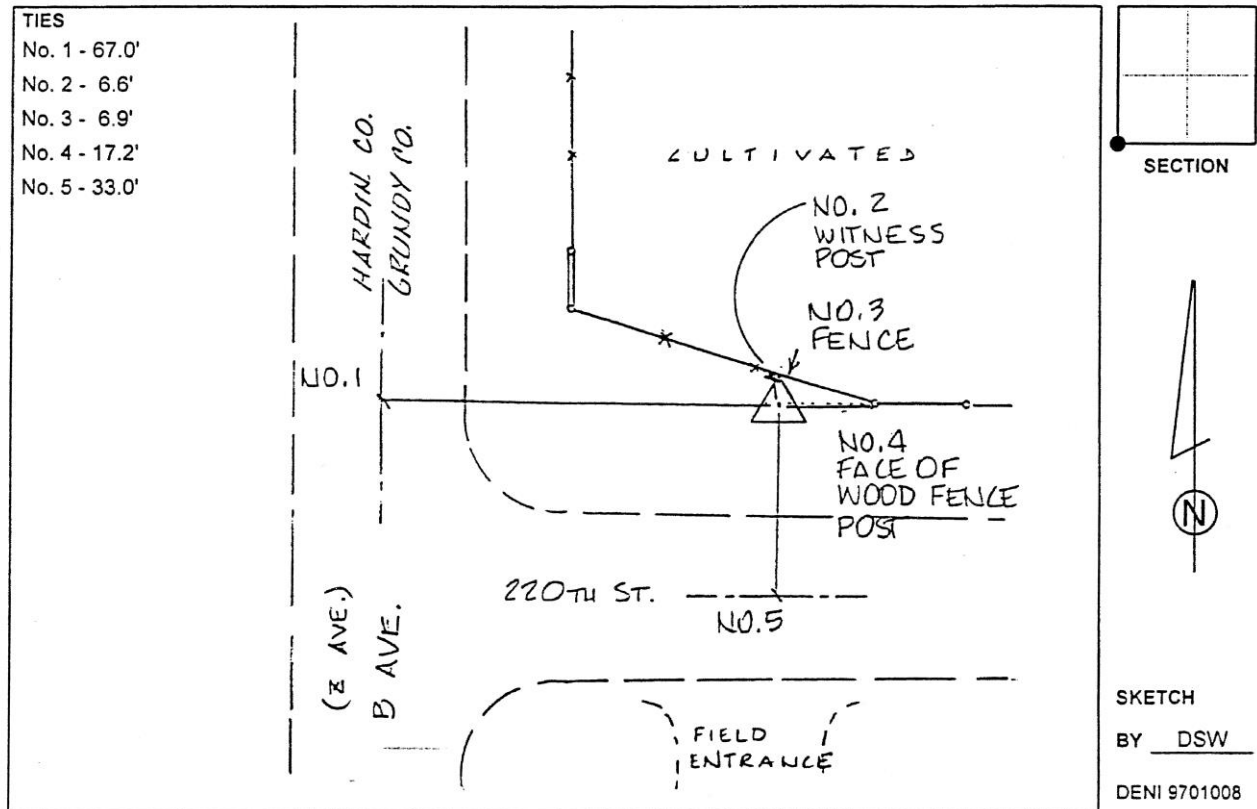
**Iowa North Zone (1401)** Northing: **3603209.331sft** Easting: **5055750.595sft**

Mapping Angle: **0°20'15"** Combination Scale Factor: **0.9999113479**

**IaRCS Zone 5** Northing: **8803788.705sft** Easting: **15296774.599sft**

Mapping Angle: **-0°30'35"** Combination Scale Factor: **0.9999965060**

**Monument Type:** 3-1/4" aluminum disk set in the top of a 12" dia. poured-in-place concrete monument.



*This document was prepared by Dan Corbin, Inc. on March 11<sup>th</sup>, 2019 for Grundy County, Iowa.*