

Grundy County, Iowa
 Horizontal Datum: **NAD 83(NA2011)** - Vertical Datum: **NAVD 1988**
 Iowa State Plane North Zone (1401)
 Iowa Regional Coordinate System, Zone 5, Waterloo LCC
 US Survey Feet
09/30/18

Point Name: **7007**

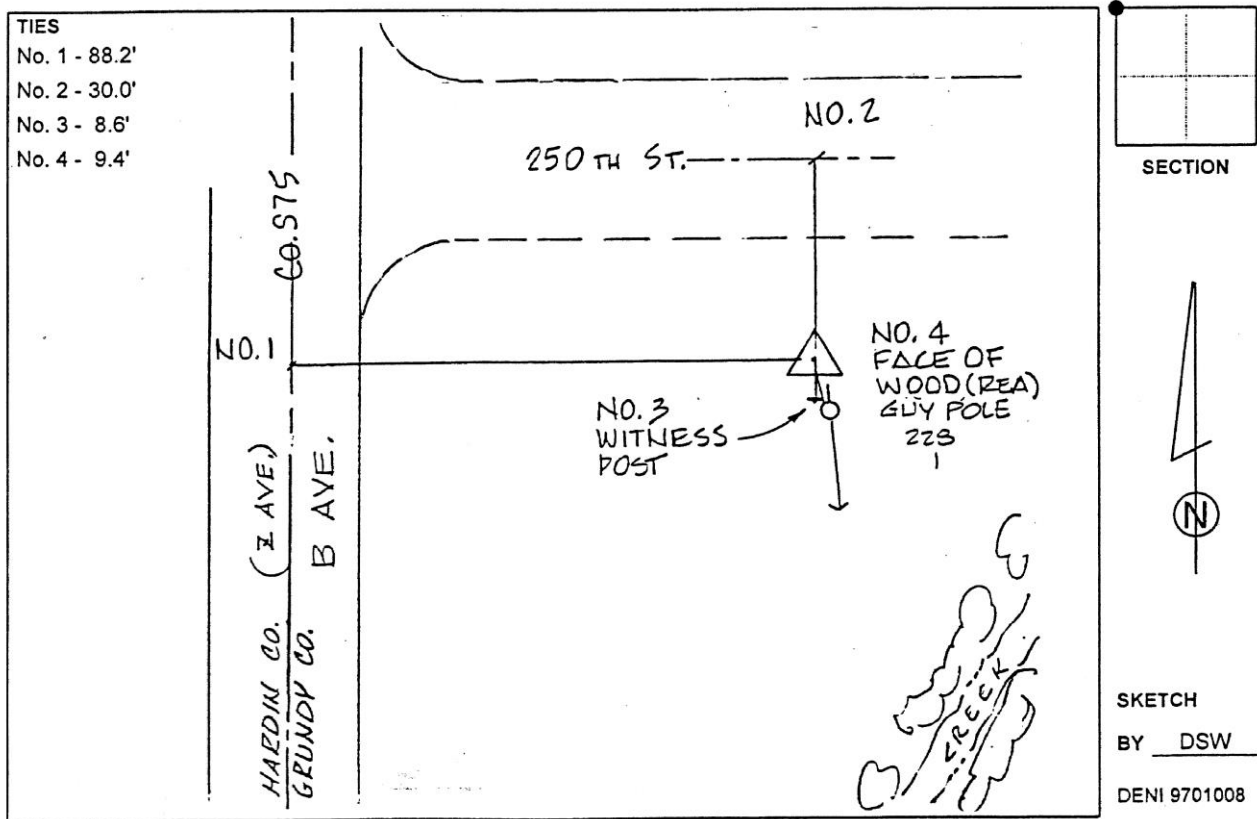
Designation: Grundy Co 7007 (Set by Deni Associates in 1997)

NAD 83(NA2011) Latitude: **N42°20'21.63585"** Longitude: **W93°00'06.96630"**
 NAVD 88 Ortho Height: **1030.926sft** Ellip. Ht: **927.021sft** **Geoid12B**

Iowa North Zone (1401) Northing: **3587105.109sft** Easting: **5055906.161sft**
 Mapping Angle: **0°20'15"** Combination Scale Factor: **0.9999173835**

IaRCS Zone 5 Northing: **8787682.574sft** Easting: **15296692.079sft**
 Mapping Angle: **-0°30'34"** Combination Scale Factor: **1.0000023066**

Monument Type: 3-1/4" aluminum disk set in the top of a 12" dia. poured-in-place concrete monument.



This document was prepared by Dan Corbin, Inc. on March 11th, 2019 for Grundy County, Iowa.