

Grundy County, Iowa

Horizontal Datum: **NAD 83(NA2011)** - Vertical Datum: **NAVD 1988**

Iowa State Plane North Zone (1401)

Iowa Regional Coordinate System, Zone 5, Waterloo LCC

US Survey Feet

09/30/18

Point Name: **7008**

Designation: Grundy Co 7008 (Set by Deni Associates in 1997)

NAD 83(NA2011) Latitude: **N42°17'46.70209"** Longitude: **W93°00'01.25263"**

NAVD 88 Ortho Height: **1052.620sft** Ellip. Ht: **948.752sft** **Geoid12B**

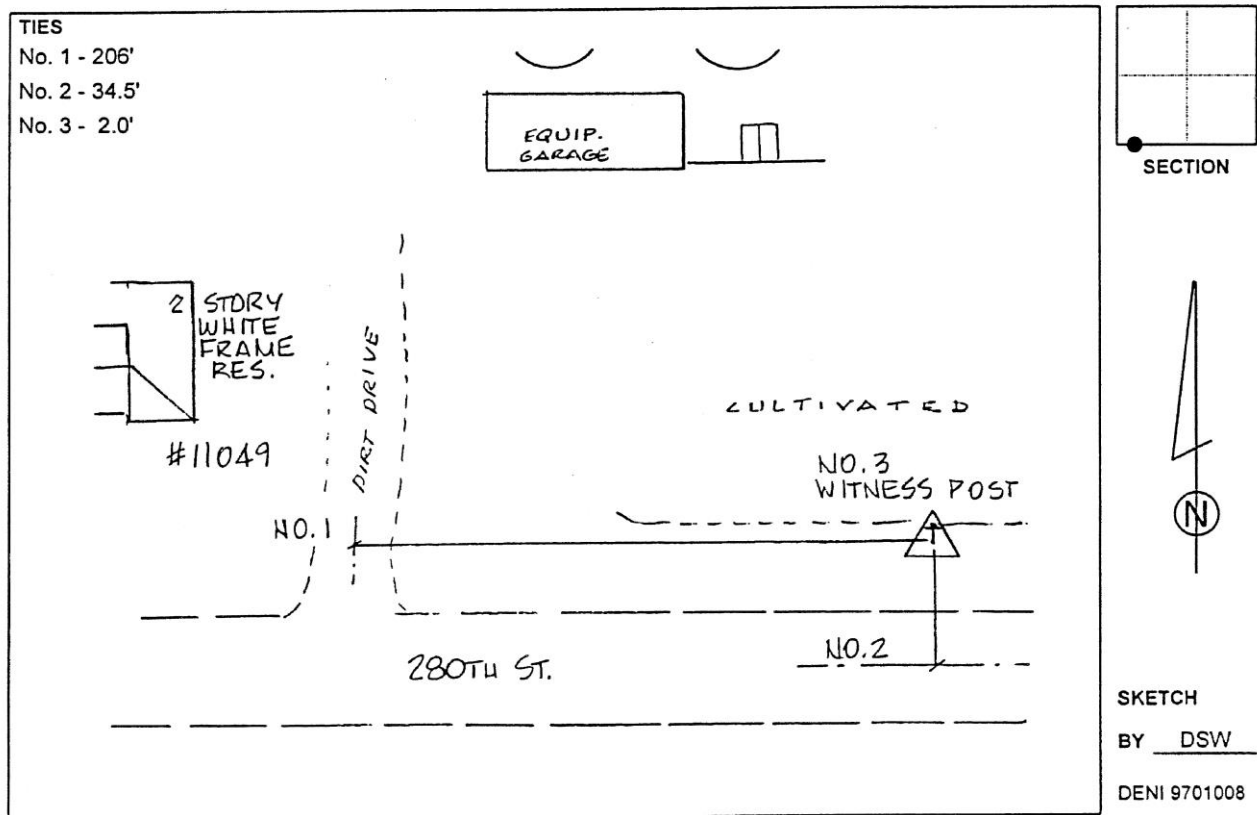
Iowa North Zone (1401) Northing: **3571424.313sft** Easting: **5056427.945sft**

Mapping Angle: **0°20'19"** Combination Scale Factor: **0.9999209008**

IaRCS Zone 5 Northing: **8771994.447sft** Easting: **15296982.028sft**

Mapping Angle: **-0°30'30"** Combination Scale Factor: **1.0000055949**

Monument Type: 3-1/4" aluminum disk set in the top of a 12" dia. poured-in-place concrete monument.



This document was prepared by Dan Corbin, Inc. on March 11th, 2019 for Grundy County, Iowa.