

Grundy County, Iowa
 Horizontal Datum: **NAD 83(NA2011)** - Vertical Datum: **NAVD 1988**
 Iowa State Plane North Zone (1401)
 Iowa Regional Coordinate System, Zone 5, Waterloo LCC
 US Survey Feet
09/30/18

Point Name: **7010**

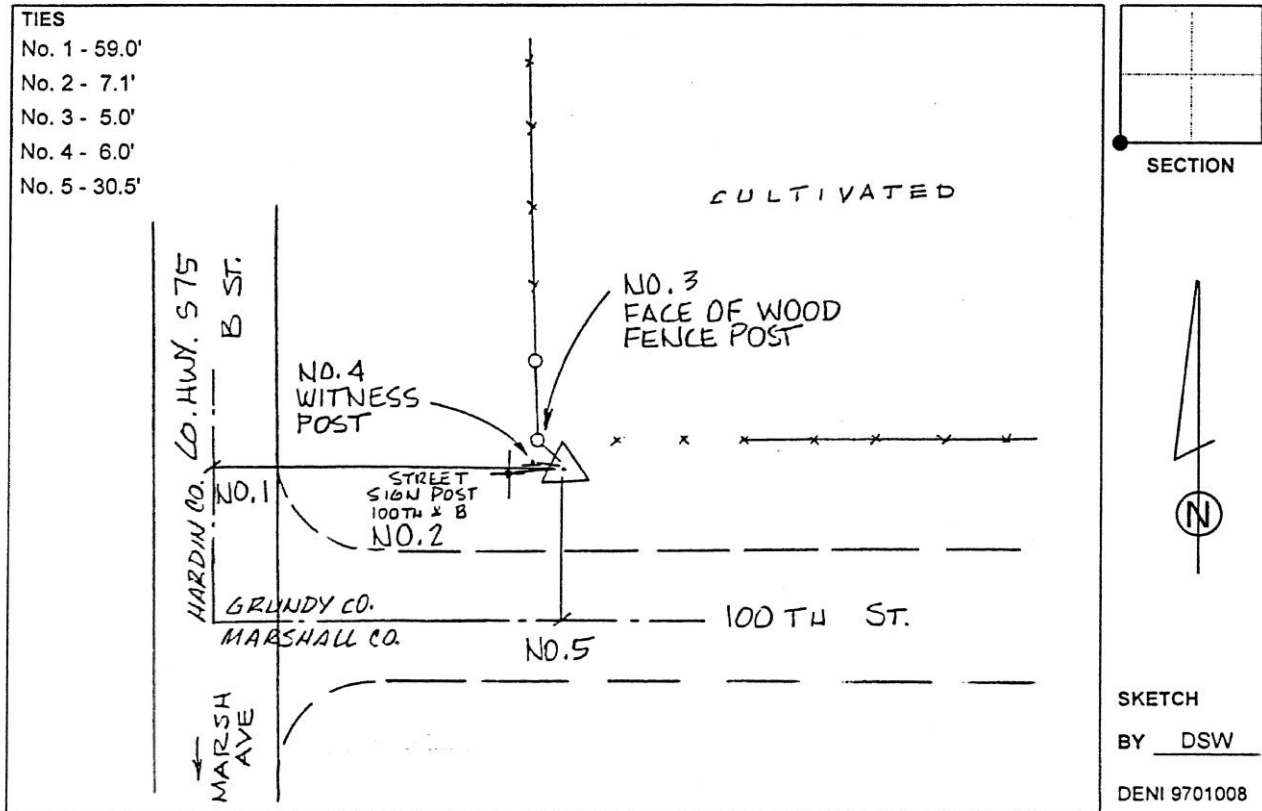
Designation: Grundy Co 7010 (Set by Deni Associates in 1997)

NAD 83(NA2011) Latitude: **N42°12'33.66231"** Longitude: **W93°00'05.21486"**
 NAVD 88 Ortho Height: **935.820sft** Ellip. Ht: **832.076sft** Geoid**12B**

Iowa North Zone (1401) Northing: **3539734.901sft** Easting: **5056317.056sft**
 Mapping Angle: **0°20'16"** Combination Scale Factor: **0.9999373876**

IaRCS Zone 5 Northing: **8740307.461sft** Easting: **15296402.651sft**
 Mapping Angle: **-0°30'33"** Combination Scale Factor: **1.0000216204**

Monument Type: 3-1/4" aluminum disk set in the top of a 12" dia. poured-in-place concrete monument.



This document was prepared by Dan Corbin, Inc. on March 11th, 2019 for Grundy County, Iowa.