

Grundy County, Iowa
 Horizontal Datum: **NAD 83(NA2011)** - Vertical Datum: **NAVD 1988**
 Iowa State Plane North Zone (1401)
 Iowa Regional Coordinate System, Zone 5, Waterloo LCC
 US Survey Feet
09/30/18

Point Name: **7011**

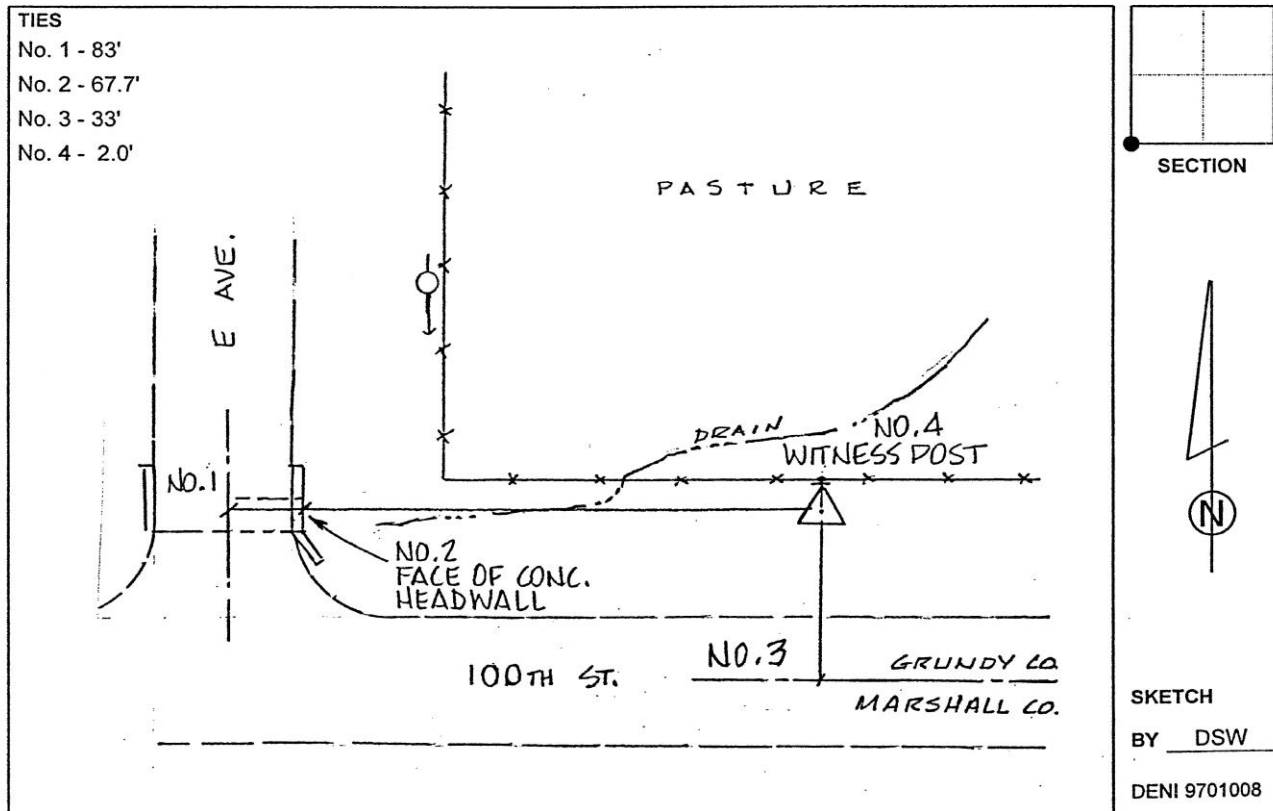
Designation: Grundy Co 7011 (Set by Deni Associates in 1997)

NAD 83(NA2011) Latitude: **N42°12'35.49159"** Longitude: **W92°56'34.89922"**
 NAVD 88 Ortho Height: **1020.029sft** Ellip. Ht: **915.932sft** Geoid**12B**

Iowa North Zone (1401) Northing: **3540018.877sft** Easting: **5072142.981sft**
 Mapping Angle: **0°22'39"** Combination Scale Factor: **0.9999333090**

IaRCS Zone 5 Northing: **8740357.460sft** Easting: **15312232.378sft**
 Mapping Angle: **-0°28'10"** Combination Scale Factor: **1.0000175442**

Monument Type: 3-1/4" aluminum disk set in the top of a 12" dia. poured-in-place concrete monument.



This document was prepared by Dan Corbin, Inc. on March 11th, 2019 for Grundy County, Iowa.