

Grundy County, Iowa
 Horizontal Datum: **NAD 83(NA2011)** - Vertical Datum: **NAVD 1988**
 Iowa State Plane North Zone (1401)
 Iowa Regional Coordinate System, Zone 5, Waterloo LCC
 US Survey Feet
09/30/18

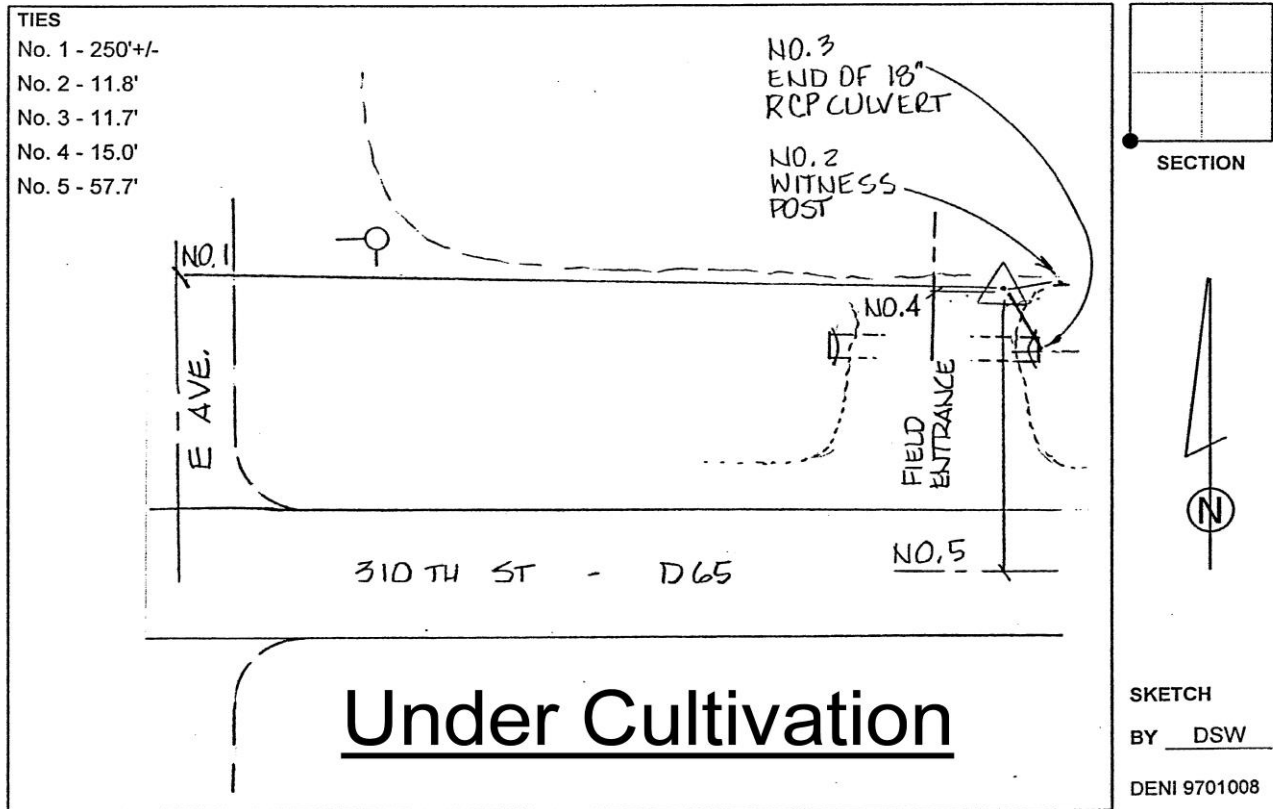
Point Name: **7012 (Destroyed)**

Designation: Grundy Co 7012 (Set by Deni Associates in 1997)

NAD 83(1996) Latitude: ~~42 15 11.67394N~~ Longitude: ~~92 56 33.24130W~~
 NAVD 88 Ortho Height: ~~1042.680~~sft Ellip. Ht: ~~938.702~~sft

Iowa North Zone (1401) Northing: ~~3555829.270~~sft Easting: ~~5072163.500~~sft
 Mapping Angle: ~~0 22 40.0~~ Combination Scale Factor: ~~0.9999713700~~

Monument Type: 3-1/4" aluminum disk set in the top of a 12" dia. poured-in-place concrete monument.



This document was prepared by Dan Corbin, Inc. on March 11th, 2019 for Grundy County, Iowa.