

**Grundy County, Iowa**  
 Horizontal Datum: **NAD 83(NA2011)** - Vertical Datum: **NAVD 1988**  
 Iowa State Plane North Zone (1401)  
 Iowa Regional Coordinate System, Zone 5, Waterloo LCC  
 US Survey Feet  
**09/30/18**

Point Name: **7013**

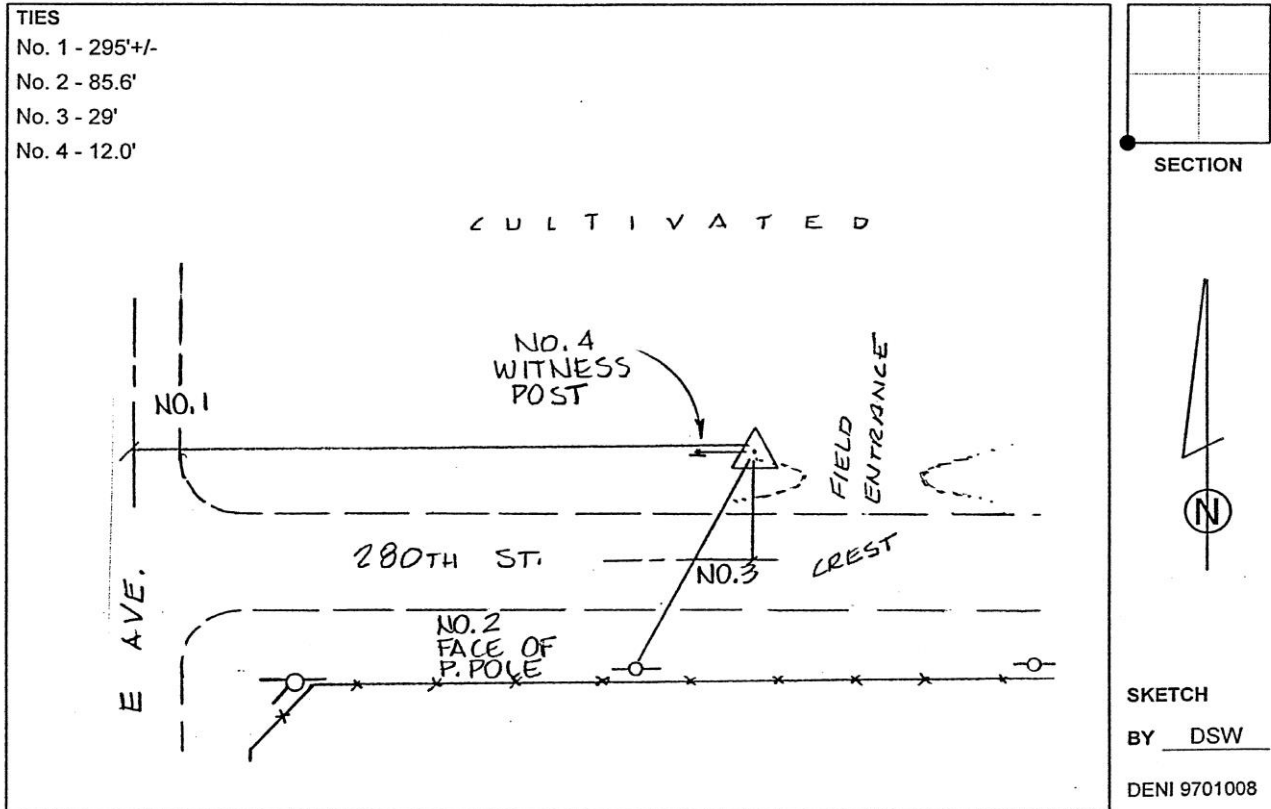
**Designation:** Grundy Co 7013 (Set by Deni Associates in 1997)

NAD 83(NA2011) Latitude: **N42°17'47.23604"** Longitude: **W92°56'33.66262"**  
 NAVD 88 Ortho Height: **1060.930sft** Ellip. Ht: **956.680sft** **Geoid12B**

**Iowa North Zone (1401)** Northing: **3571575.888sft** Easting: **5072028.004sft**  
 Mapping Angle: **0°22'40"** Combination Scale Factor: **0.9999205052**

**IaRCS Zone 5** Northing: **8771915.388sft** Easting: **15312583.944sft**  
 Mapping Angle: **-0°28'10"** Combination Scale Factor: **1.0000052000**

**Monument Type:** 3-1/4" aluminum disk set in the top of a 12" dia. poured-in-place concrete monument.



*This document was prepared by Dan Corbin, Inc. on March 11<sup>th</sup>, 2019 for Grundy County, Iowa.*