

Grundy County, Iowa
 Horizontal Datum: **NAD 83(NA2011)** - Vertical Datum: **NAVD 1988**
 Iowa State Plane North Zone (1401)
 Iowa Regional Coordinate System, Zone 5, Waterloo LCC
 US Survey Feet
09/30/18

Point Name: **7015**

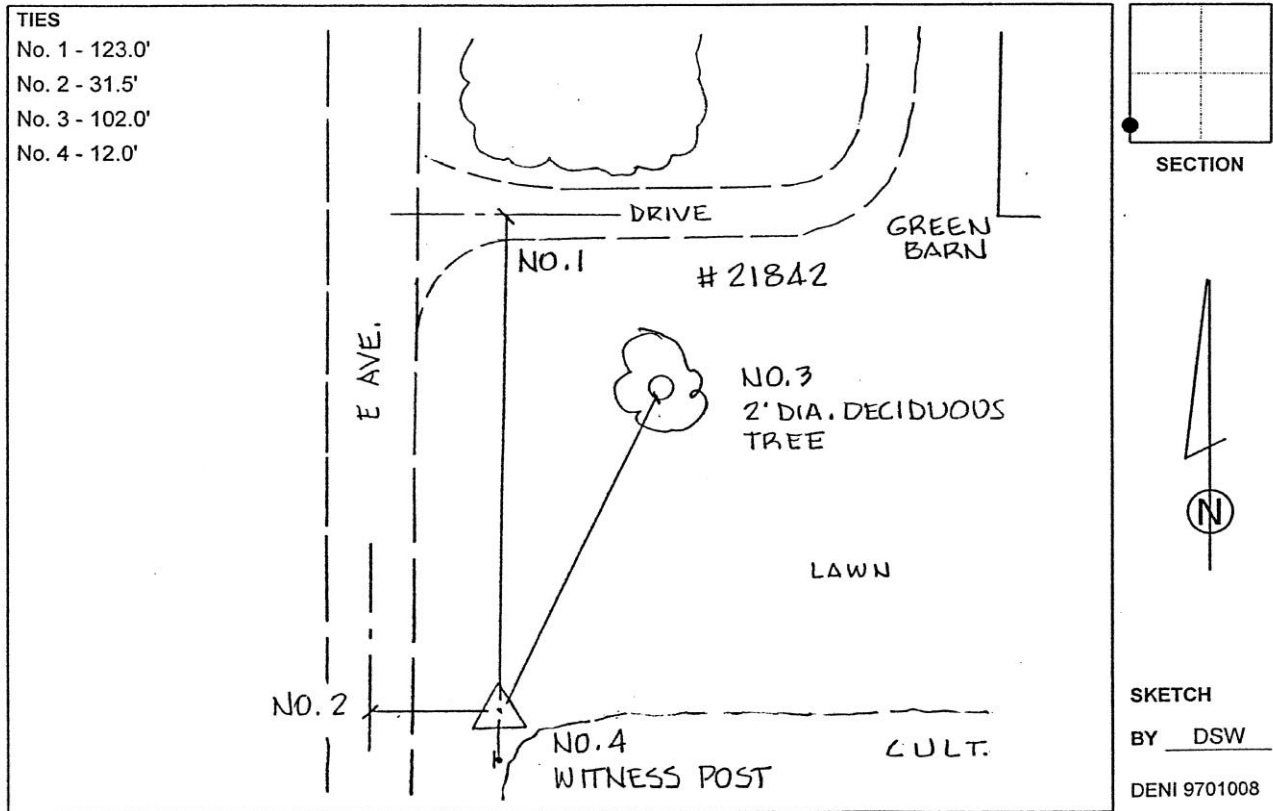
Designation: Grundy Co 7015 (Set by Deni Associates in 1997)

NAD 83(NA2011) Latitude: **N42°23'07.73417"** Longitude: **W92°56'39.68014"**
 NAVD 88 Ortho Height: **1079.950sft** Ellip. Ht: **975.592sft** **Geoid12B**

Iowa North Zone (1401) Northing: **3604015.585sft** Easting: **5071362.551sft**
 Mapping Angle: **0°22'36"** Combination Scale Factor: **0.9999107988**

IaRCS Zone 5 Northing: **8804364.133sft** Easting: **15312398.099sft**
 Mapping Angle: **-0°28'14"** Combination Scale Factor: **0.9999959672**

Monument Type: 3-1/4" aluminum disk set in the top of a 12" dia. poured-in-place concrete monument.



This document was prepared by Dan Corbin, Inc. on March 11th, 2019 for Grundy County, Iowa.