

Grundy County, Iowa
 Horizontal Datum: **NAD 83(NA2011)** - Vertical Datum: **NAVD 1988**
 Iowa State Plane North Zone (1401)
 Iowa Regional Coordinate System, Zone 5, Waterloo LCC
 US Survey Feet
09/30/18

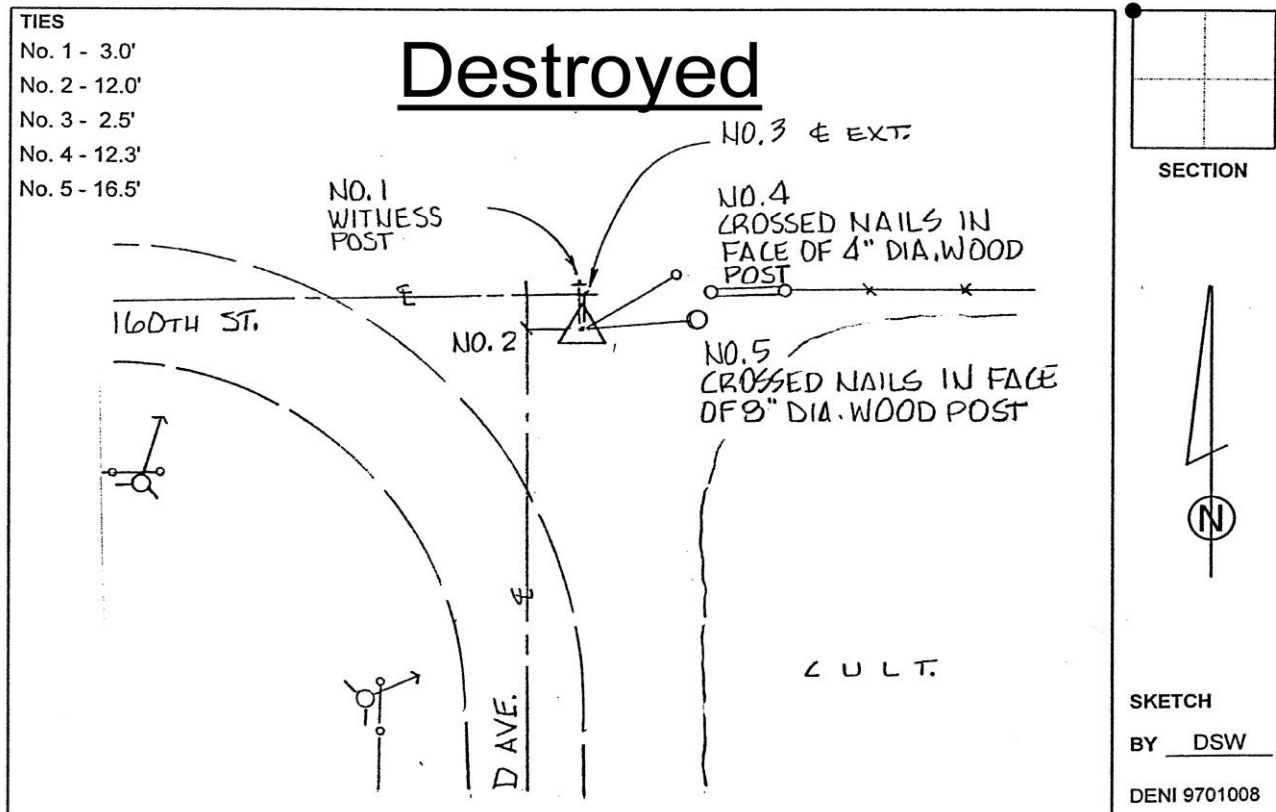
Point Name: **7017 (Destroyed)**

Designation: Grundy Co 7017 (Set by Deni Associates in 1997)

NAD 83(1996) Latitude: ~~42 28 13.86638N~~ Longitude: ~~92 57 51.81665W~~
 NAVD 88 Ortho Height: ~~1062.490~~sft Ellip. Ht: ~~958.577~~sft

Iowa North Zone (1401) Northing: ~~3634969.410~~sft Easting: ~~5065752.860~~sft
 Mapping Angle: ~~0 21 46.8~~ Combination Scale Factor: ~~0.9999512600~~

Monument Type: 3-1/4" aluminum disk set in the top of a 12" dia. poured-in-place concrete monument.



This document was prepared by Dan Corbin, Inc. on March 11th, 2019 for Grundy County, Iowa.