

**Grundy County, Iowa**  
 Horizontal Datum: **NAD 83(NA2011)** - Vertical Datum: **NAVD 1988**  
 Iowa State Plane North Zone (1401)  
 Iowa Regional Coordinate System, Zone 5, Waterloo LCC  
 US Survey Feet  
**09/30/18**

Point Name: **7018**

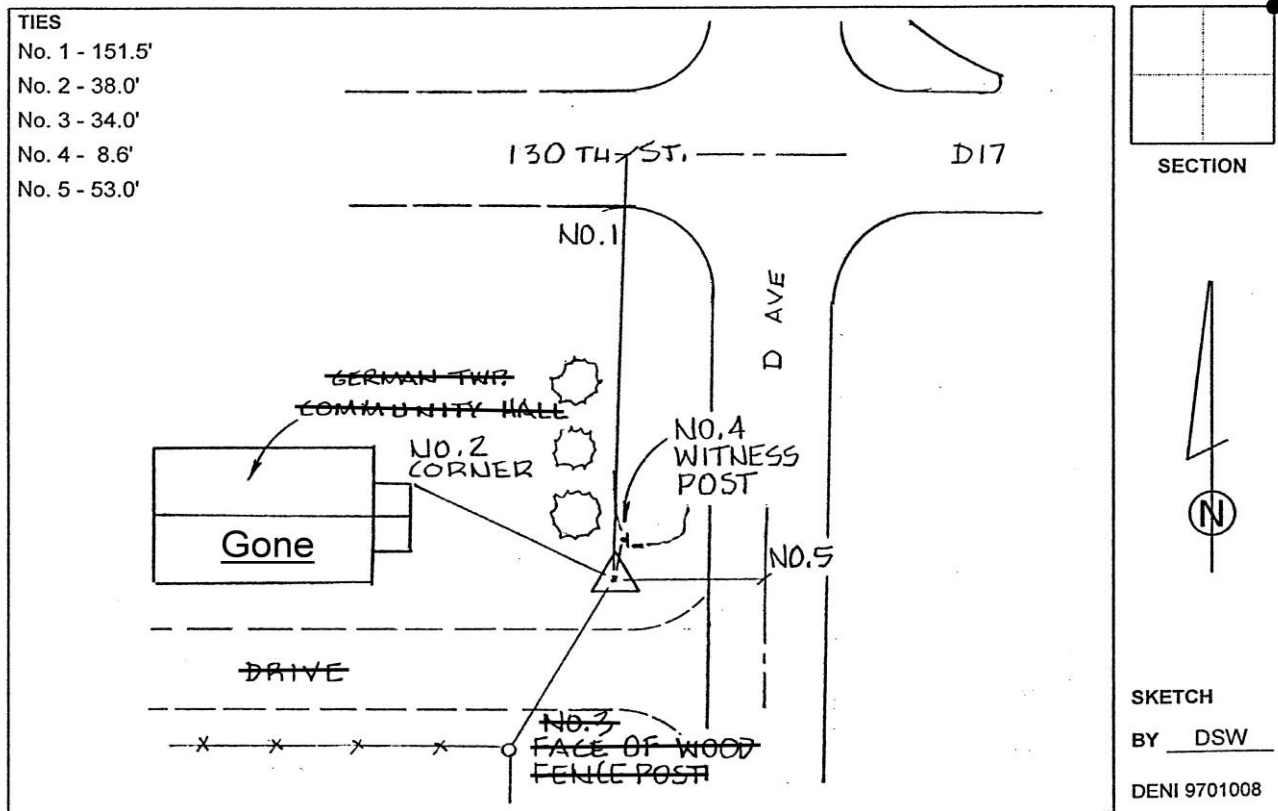
**Designation:** Grundy Co 7018 (Set by Deni Associates in 1997)

NAD 83(NA2011) Latitude: **N42°30'49.59493"** Longitude: **W92°58'03.41508"**  
 NAVD 88 Ortho Height: **1078.973sft** Ellip. Ht: **974.988sft** Geoid12B

**Iowa North Zone (1401)** Northing: **3650727.922sft** Easting: **5064784.379sft**  
 Mapping Angle: **0°21'39"** Combination Scale Factor: **0.9999023553**

**IaRCS Zone 5** Northing: **8851172.612sft** Easting: **15306510.679sft**  
 Mapping Angle: **-0°29'10"** Combination Scale Factor: **0.9999882078**

**Monument Type:** 3-1/4" aluminum disk set in the top of a 12" dia. poured-in-place concrete monument.



*This document was prepared by Dan Corbin, Inc. on March 11<sup>th</sup>, 2019 for Grundy County, Iowa.*