

Grundy County, Iowa
Horizontal Datum: **NAD 83(NA2011)** - Vertical Datum: **NAVD 1988**
Iowa State Plane North Zone (1401)
Iowa Regional Coordinate System, Zone 5, Waterloo LCC
US Survey Feet
09/30/18

Point Name: **7019**

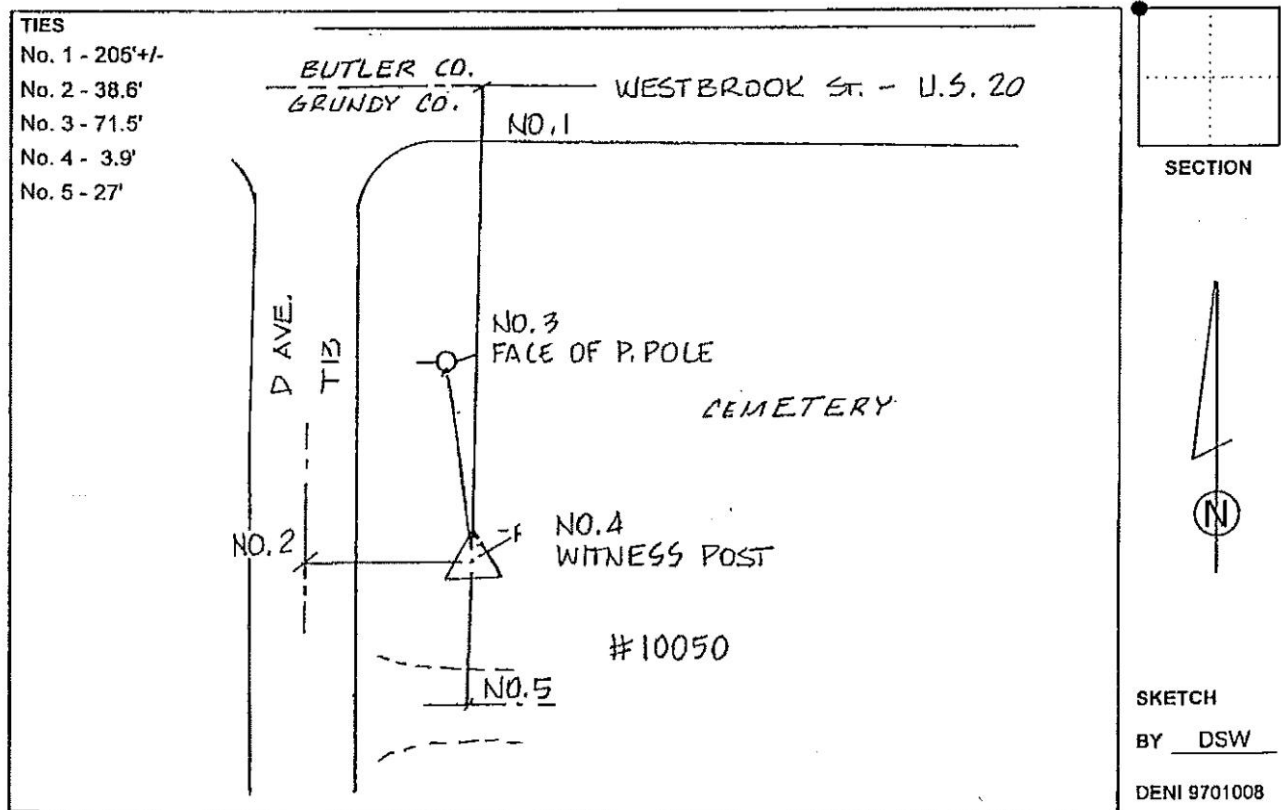
Designation: Grundy Co 7019 (Set by Deni Associates in 1997)

NAD 83(NA2011) Latitude: **N42°33'21.76320"** Longitude: **W92°58'00.46162"**
NAVD 88 Ortho Height: **1085.950sft** Ellip. Ht: **982.186sft** **Geoid12B**

Iowa North Zone (1401) Northing: **3666133.008sft** Easting: **5064908.406sft**
Mapping Angle: **0°21'41"** Combination Scale Factor: **0.9999003106**

IaRCS Zone 5 Northing: **8866575.506sft** Easting: **15306862.452sft**
Mapping Angle: **-0°29'08"** Combination Scale Factor: **0.9999863889**

Monument Type: 3-1/4" aluminum disk set in the top of a 12" dia. poured-in-place concrete monument.



This document was prepared by Dan Corbin, Inc. on March 11th, 2019 for Grundy County, Iowa.