

Grundy County, Iowa

Horizontal Datum: **NAD 83(NA2011)** - Vertical Datum: **NAVD 1988**

Iowa State Plane North Zone (1401)

Iowa Regional Coordinate System, Zone 5, Waterloo LCC

US Survey Feet

09/30/18

Point Name: **7021**

Designation: Grundy Co 7021 (Set by Deni Associates in 1997)

NAD 83(NA2011) Latitude: **N42°30'51.09483"** Longitude: **W92°54'56.10819"**

NAVD 88 Ortho Height: **1028.170sft** Ellip. Ht: **923.798sft** Geoid**12B**

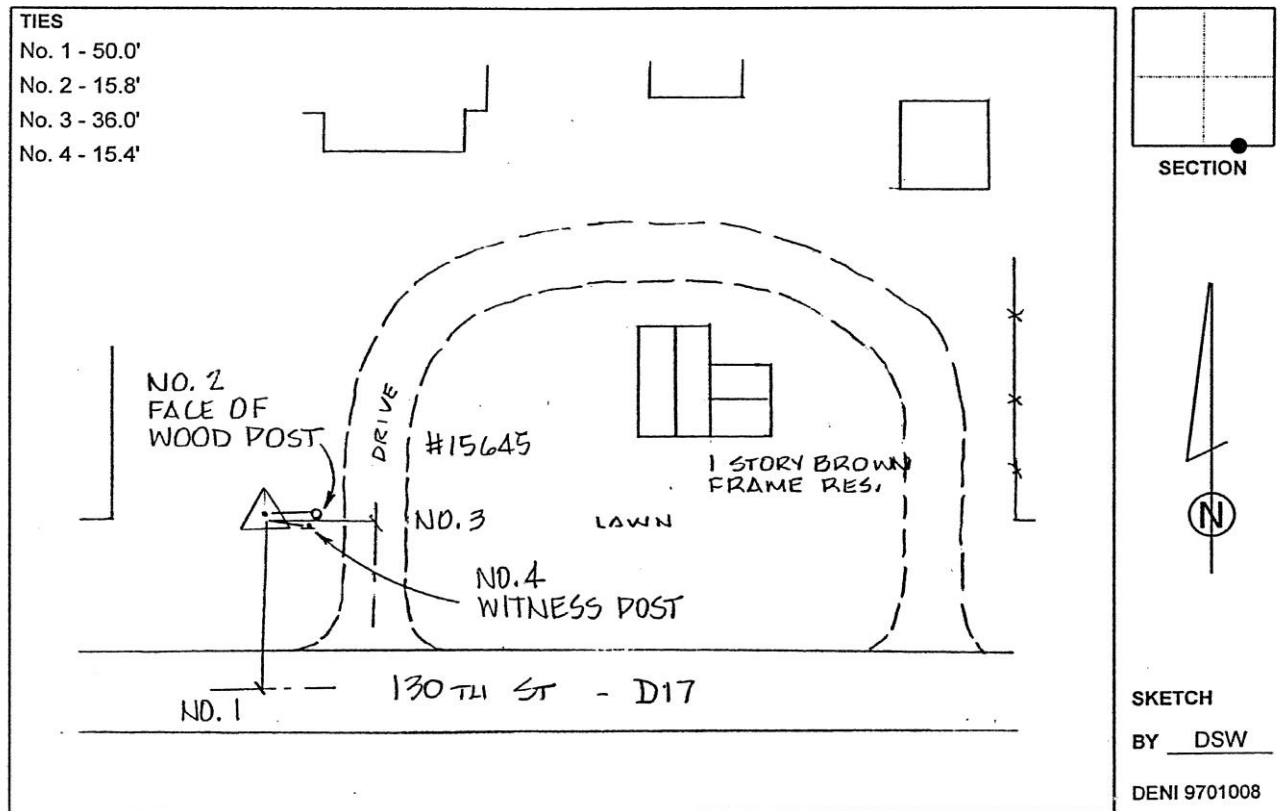
Iowa North Zone (1401) Northing: **3650972.408sft** Easting: **5078810.659sft**

Mapping Angle: **0°23'46"** Combination Scale Factor: **0.9999047825**

IaRCS Zone 5 Northing: **8851209.727sft** Easting: **15320540.245sft**

Mapping Angle: **-0°27'03"** Combination Scale Factor: **0.9999906375**

Monument Type: 3-1/4" aluminum disk set in the top of a 12" dia. poured-in-place concrete monument.



This document was prepared by Dan Corbin, Inc. on March 11th, 2019 for Grundy County, Iowa.