

Grundy County, Iowa
Horizontal Datum: **NAD 83(NA2011)** - Vertical Datum: **NAVD 1988**
Iowa State Plane North Zone (1401)
Iowa Regional Coordinate System, Zone 5, Waterloo LCC
US Survey Feet
09/30/18

Point Name: **7022**

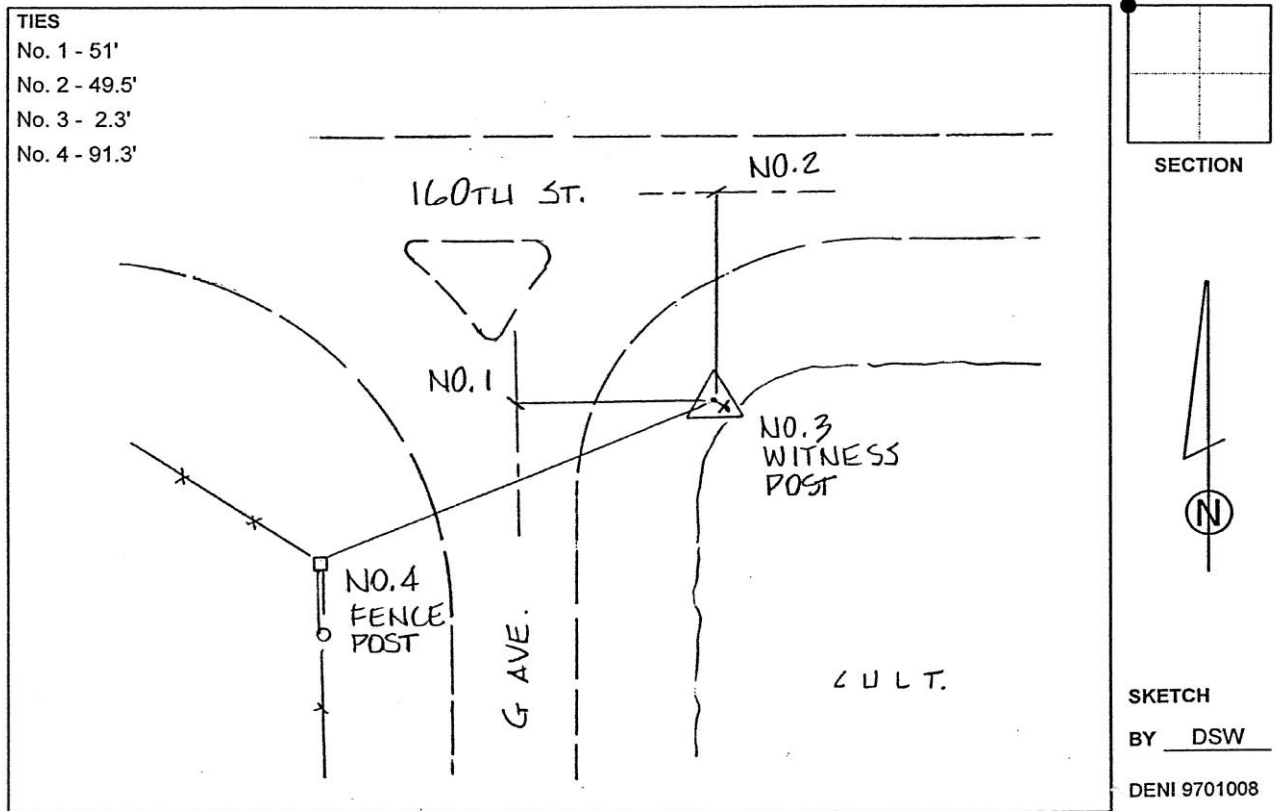
Designation: Grundy Co 7022 (Set by Deni Associates in 1997)

NAD 83(NA2011) Latitude: **N42°28'13.36791"** Longitude: **W92°54'20.60993"**
NAVD 88 Ortho Height: **1052.970sft** Ellip. Ht: **948.441sft** **Geoid12B**

Iowa North Zone (1401) Northing: **3635024.722sft** Easting: **5081581.321sft**
Mapping Angle: **0°24'10"** Combination Scale Factor: **0.9999059328**

IaRCS Zone 5 Northing: **8835221.454sft** Easting: **15323075.068sft**
Mapping Angle: **-0°26'39"** Combination Scale Factor: **0.9999915538**

Monument Type: 3-1/4" aluminum disk set in the top of a 12" dia. poured-in-place concrete monument.



This document was prepared by Dan Corbin, Inc. on March 11th, 2019 for Grundy County, Iowa.