

Grundy County, Iowa
 Horizontal Datum: **NAD 83(NA2011)** - Vertical Datum: **NAVD 1988**
 Iowa State Plane North Zone (1401)
 Iowa Regional Coordinate System, Zone 5, Waterloo LCC
 US Survey Feet
09/30/18

Point Name: **7023**

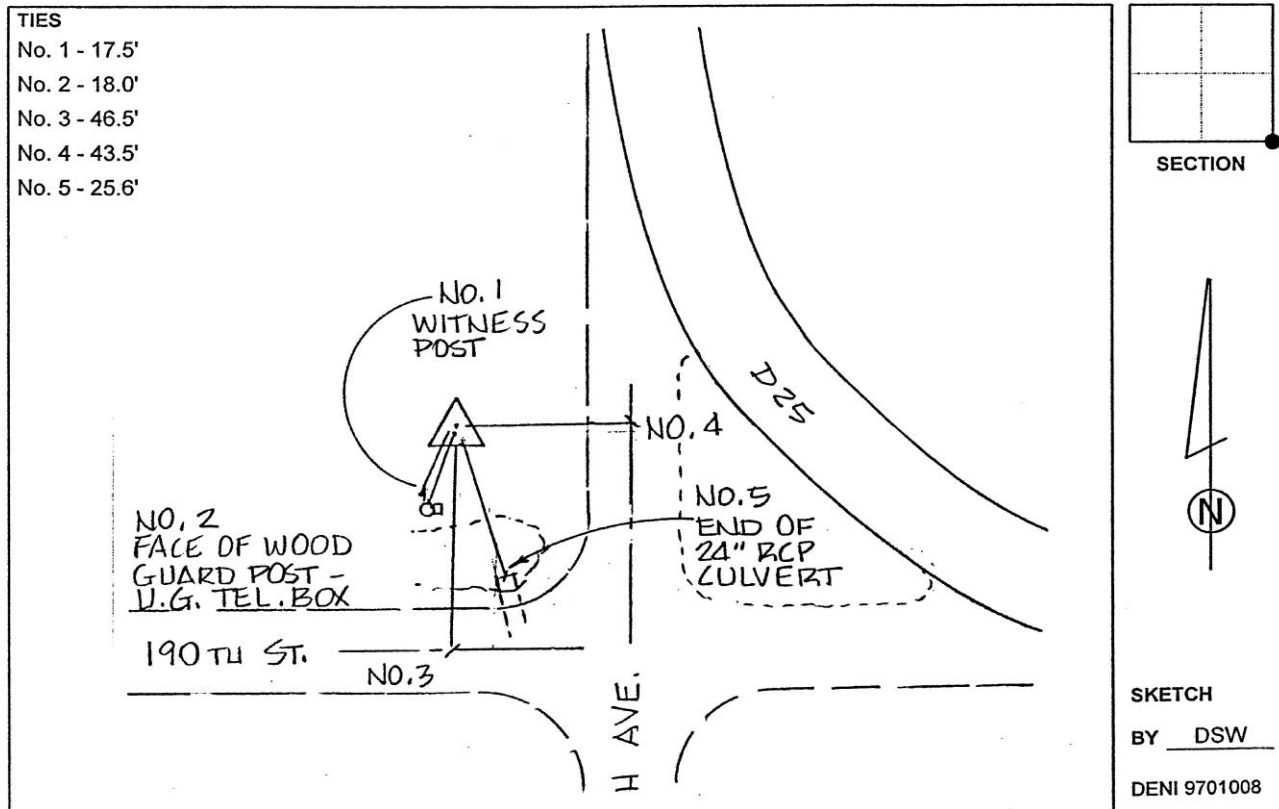
Designation: Grundy Co 7023 (Set by Deni Associates in 1997)

NAD 83(NA2011) Latitude: **N42°25'37.62424"** Longitude: **W92°53'11.50874"**
 NAVD 88 Ortho Height: **1071.020sft** Ellip. Ht: **966.392sft** **Geoid12B**

Iowa North Zone (1401) Northing: **3619296.357sft** Easting: **5086874.256sft**
 Mapping Angle: **0°24'57"** Combination Scale Factor: **0.9999079434**

IaRCS Zone 5 Northing: **8819415.211sft** Easting: **15328135.345sft**
 Mapping Angle: **-0°25'53"** Combination Scale Factor: **0.9999933337**

Monument Type: 3-1/4" aluminum disk set in the top of a 12" dia. poured-in-place concrete monument.



This document was prepared by Dan Corbin, Inc. on March 11th, 2019 for Grundy County, Iowa.