

Grundy County, Iowa
 Horizontal Datum: **NAD 83(NA2011)** - Vertical Datum: **NAVD 1988**
 Iowa State Plane North Zone (1401)
 Iowa Regional Coordinate System, Zone 5, Waterloo LCC
 US Survey Feet
09/30/18

Point Name: **7026**

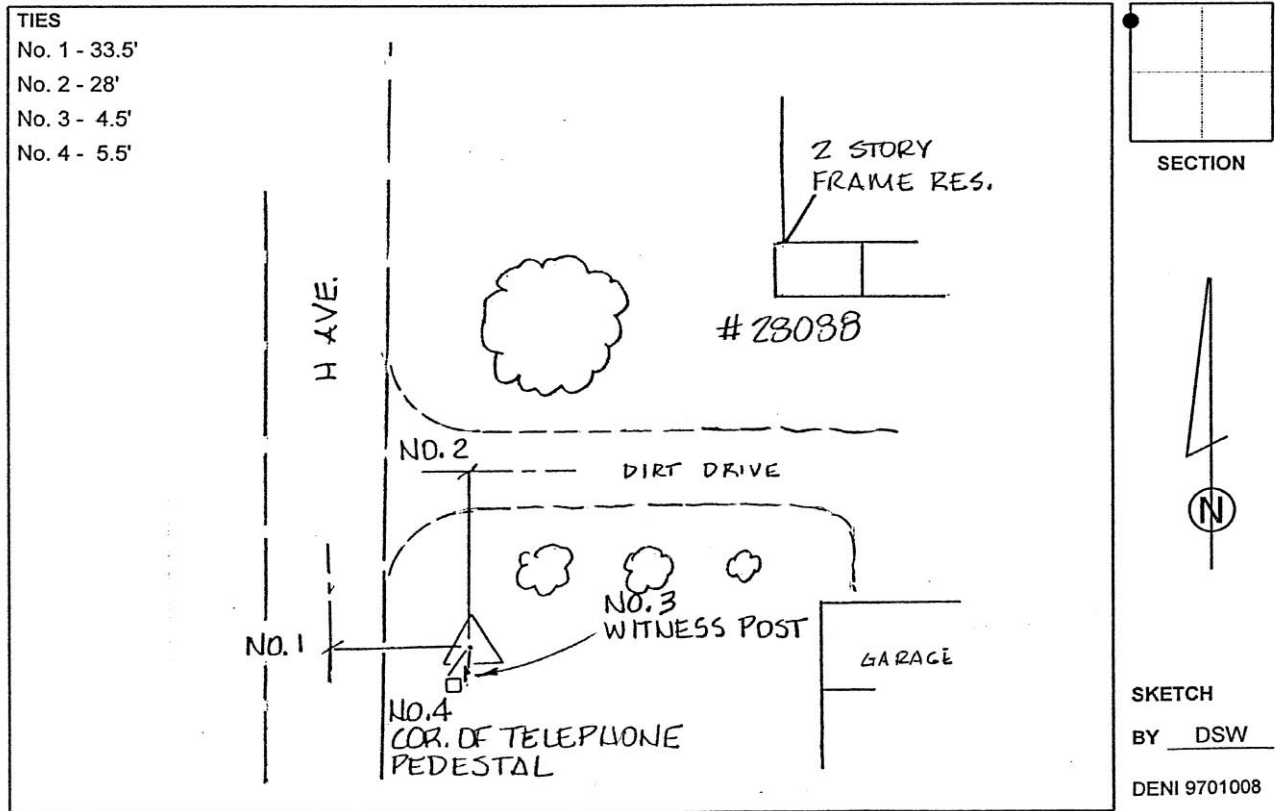
Designation: Grundy Co 7026 (Set by Deni Associates in 1997)

NAD 83(NA2011) Latitude: **N42°17'42.36261"** Longitude: **W92°53'07.38072"**
 NAVD 88 Ortho Height: **1092.617sft** Ellip. Ht: **988.122sft** **Geoid12B**

Iowa North Zone (1401) Northing: **3571190.025sft** Easting: **5087533.595sft**
 Mapping Angle: **0°25'00"** Combination Scale Factor: **0.9999191547**

IaRCS Zone 5 Northing: **8771300.297sft** Easting: **15328083.449sft**
 Mapping Angle: **-0°25'50"** Combination Scale Factor: **1.0000038422**

Monument Type: 3-1/4" aluminum disk set in the top of a 12" dia. poured-in-place concrete monument.



This document was prepared by Dan Corbin, Inc. on March 11th, 2019 for Grundy County, Iowa.