

**Grundy County, Iowa**  
 Horizontal Datum: **NAD 83(NA2011)** - Vertical Datum: **NAVD 1988**  
 Iowa State Plane North Zone (1401)  
 Iowa Regional Coordinate System, Zone 5, Waterloo LCC  
 US Survey Feet  
**09/30/18**

Point Name: **7027**

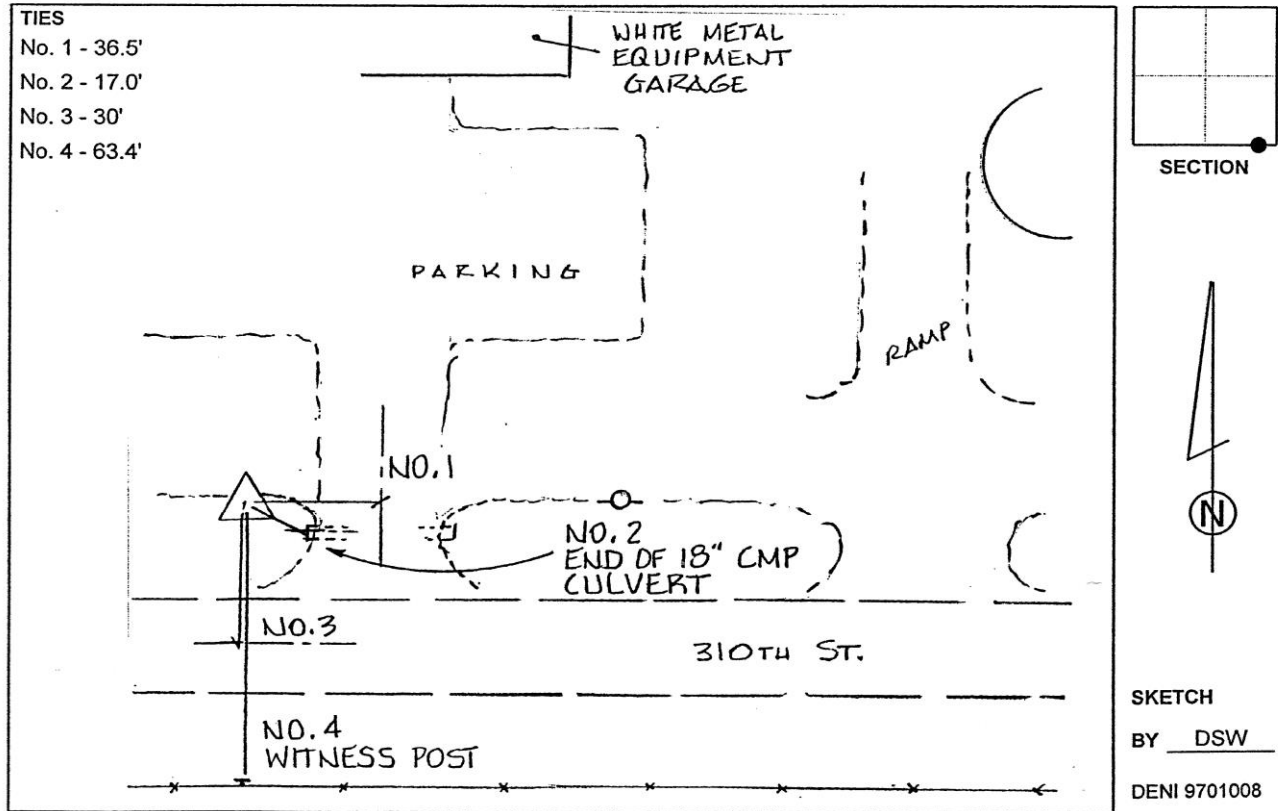
**Designation:** Grundy Co 7027 (Set by Deni Associates in 1997)

NAD 83(NA2011) Latitude: **N42°15'12.23179"** Longitude: **W92°53'12.43522"**  
 NAVD 88 Ortho Height: **1022.437sft** Ellip. Ht: **917.998sft** **Geoid12B**

**Iowa North Zone (1401)** Northing: **3555990.297sft** Easting: **5087263.979sft**  
 Mapping Angle: **0°24'56"** Combination Scale Factor: **0.9999274694**

**IaRCS Zone 5** Northing: **8756104.931sft** Easting: **15327589.123sft**  
 Mapping Angle: **-0°25'53"** Combination Scale Factor: **1.0000119357**

**Monument Type:** 3-1/4" aluminum disk set in the top of a 12" dia. poured-in-place concrete monument.



*This document was prepared by Dan Corbin, Inc. on March 11<sup>th</sup>, 2019 for Grundy County, Iowa.*