

**Grundy County, Iowa**  
 Horizontal Datum: **NAD 83(NA2011)** - Vertical Datum: **NAVD 1988**  
 Iowa State Plane North Zone (1401)  
 Iowa Regional Coordinate System, Zone 5, Waterloo LCC  
 US Survey Feet  
**09/30/18**

Point Name: **7028**

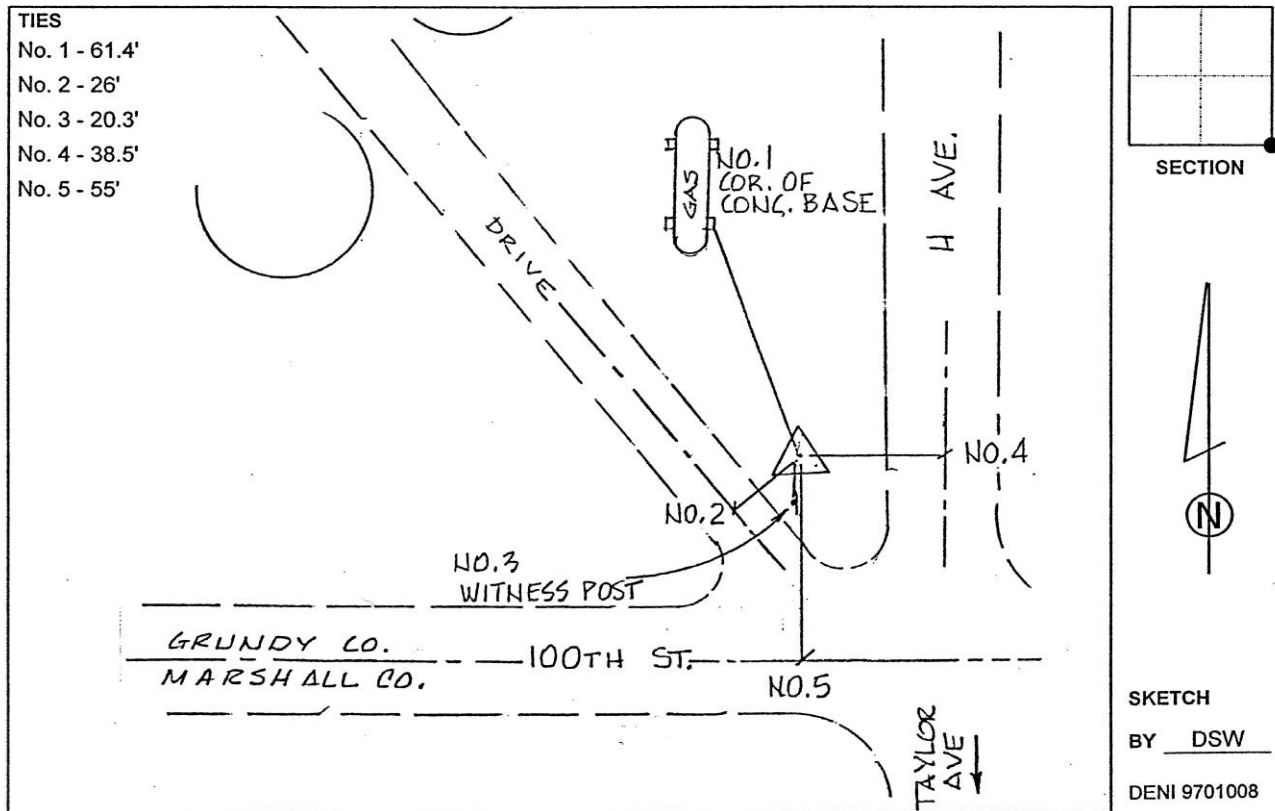
**Designation:** Grundy Co 7028 (Set by Deni Associates in 1997)

NAD 83(NA2011) Latitude: **N42°12'36.55161"** Longitude: **W92°53'06.52825"**  
 NAVD 88 Ortho Height: **1054.010sft** Ellip. Ht: **949.659sft** **Geoid12B**

**Iowa North Zone (1401)** Northing: **3540234.856sft** Easting: **5087822.804sft**  
 Mapping Angle: **0°25'00"** Combination Scale Factor: **0.9999316562**

**IaRCS Zone 5** Northing: **8740341.620sft** Easting: **15327915.001sft**  
 Mapping Angle: **-0°25'49"** Combination Scale Factor: **1.0000158928**

**Monument Type:** 3-1/4" aluminum disk set in the top of a 12" dia. poured-in-place concrete monument.



*This document was prepared by Dan Corbin, Inc. on March 11<sup>th</sup>, 2019 for Grundy County, Iowa.*