

Grundy County, Iowa

Horizontal Datum: **NAD 83(NA2011)** - Vertical Datum: **NAVD 1988**

Iowa State Plane North Zone (1401)

Iowa Regional Coordinate System, Zone 5, Waterloo LCC

US Survey Feet

09/30/18

Point Name: **7029**

Designation: Grundy Co 7029 (Set by Deni Associates in 1997)

NAD 83(NA2011) Latitude: **N42°12'36.77629"** Longitude: **W92°49'15.32130"**

NAVD 88 Ortho Height: **1031.100sft** Ellip. Ht: **926.600sft** Geoid**12B**

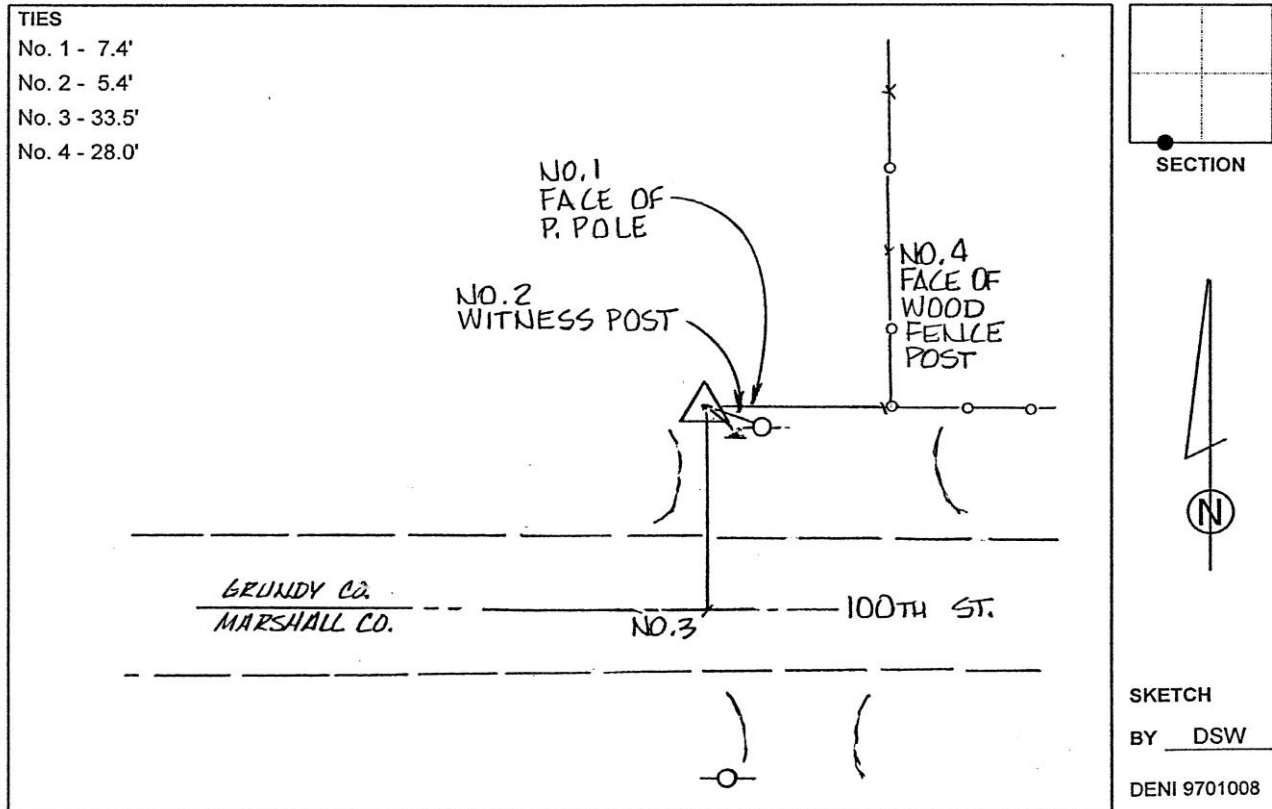
Iowa North Zone (1401) Northing: **3540390.753sft** Easting: **5105221.533sft**

Mapping Angle: **0°27'37"** Combination Scale Factor: **0.9999327497**

IaRCS Zone 5 Northing: **8740240.283sft** Easting: **15345315.599sft**

Mapping Angle: **-0°23'13"** Combination Scale Factor: **1.0000169868**

Monument Type: 3-1/4" aluminum disk set in the top of a 12" dia. poured-in-place concrete monument.



This document was prepared by Dan Corbin, Inc. on March 11th, 2019 for Grundy County, Iowa.